



Selwyn Community Improvements

Lakefield and Young's Point

Design Development Workshop

November 12, 2014



Agenda:

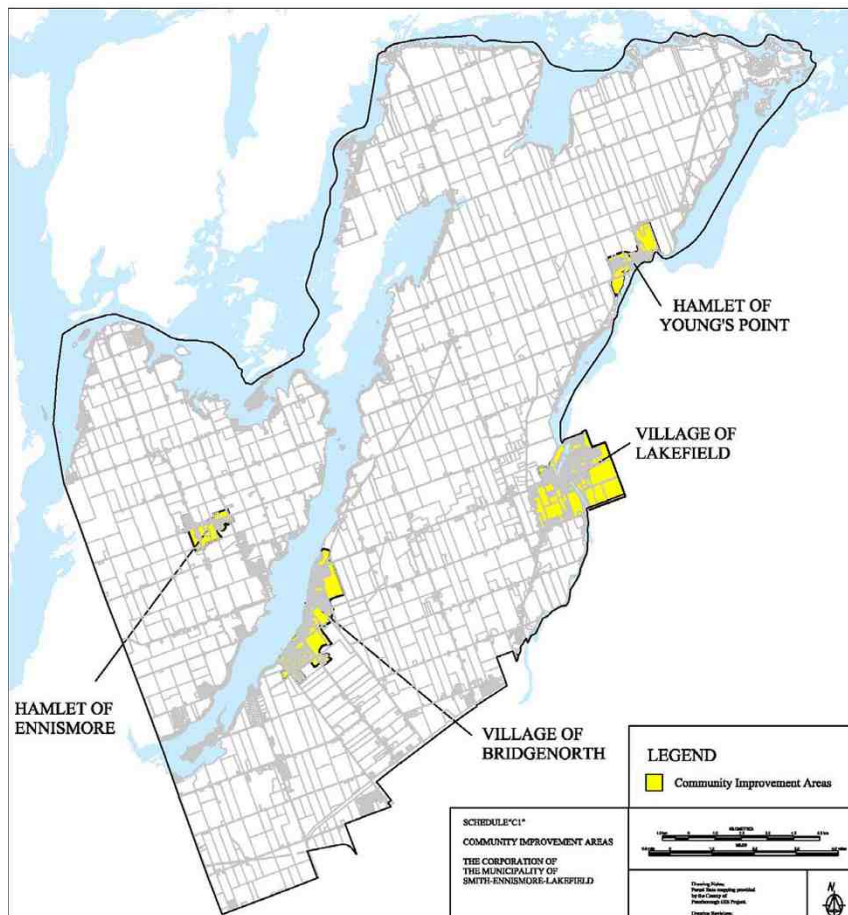
1. Introductions (5 minutes)
2. Project Background and Scope (10 minutes)
3. Design Primer (5 minutes)
4. Workshop Format (5 minutes)
5. Design Presentation (40 minutes)
6. Input into Design Through Workshop Stations (40 minutes)
7. Preliminary Report Back (10 minutes)
8. Next Steps (5 minutes)



Background and Scope of Projects

Background

Refining and designing key parts of your community based on strategies that were identified in the 2012 Community Improvement Plan.



Township of Smith-Ennismore-Lakefield

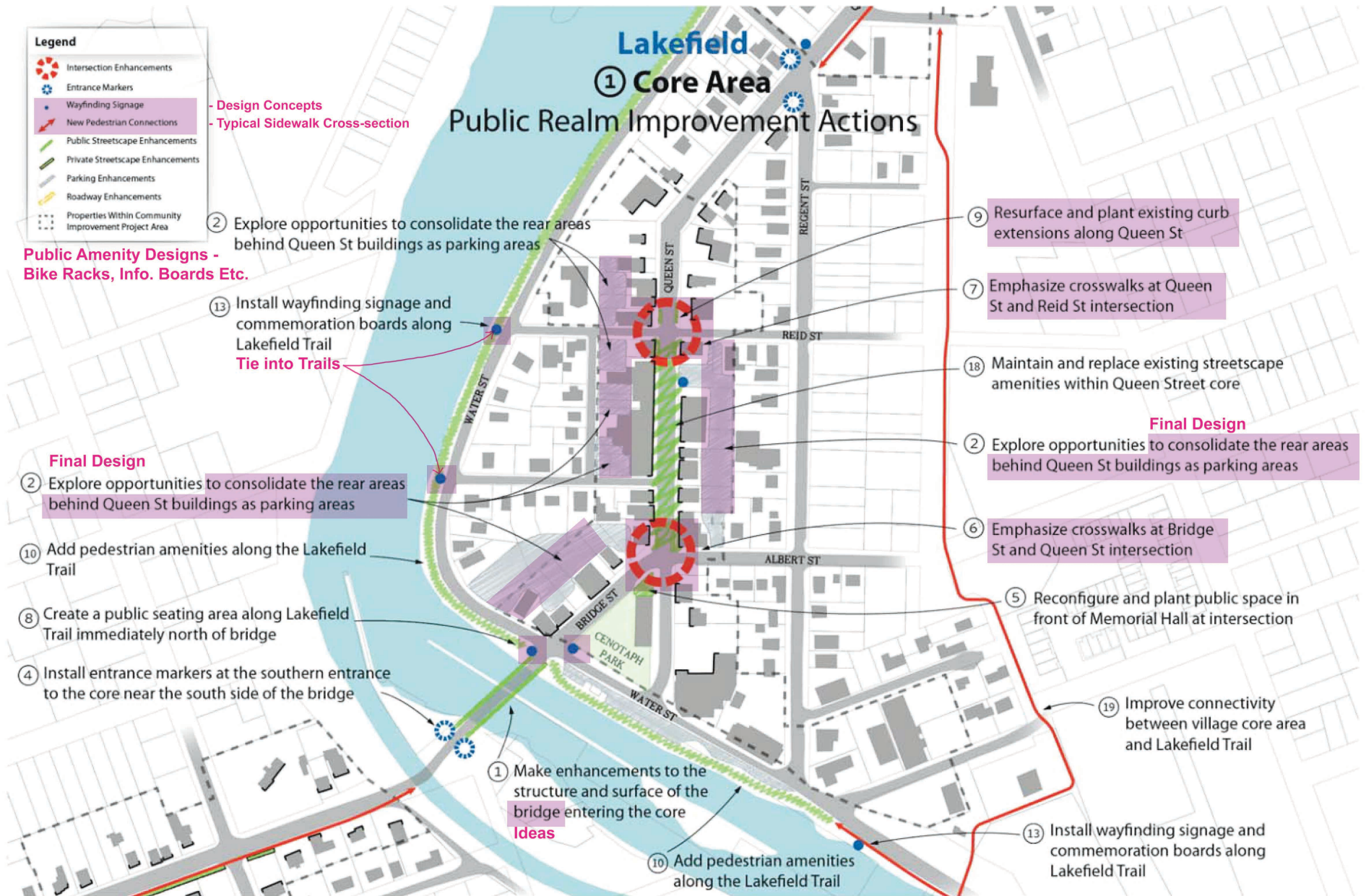
Community Improvement Plan



Township of
Smith-Ennismore-Lakefield

RCI Consulting & GSP Group
November 2012

Scope of Work



Lakefield

③ South Shoulder Area Public Realm Improvement Actions

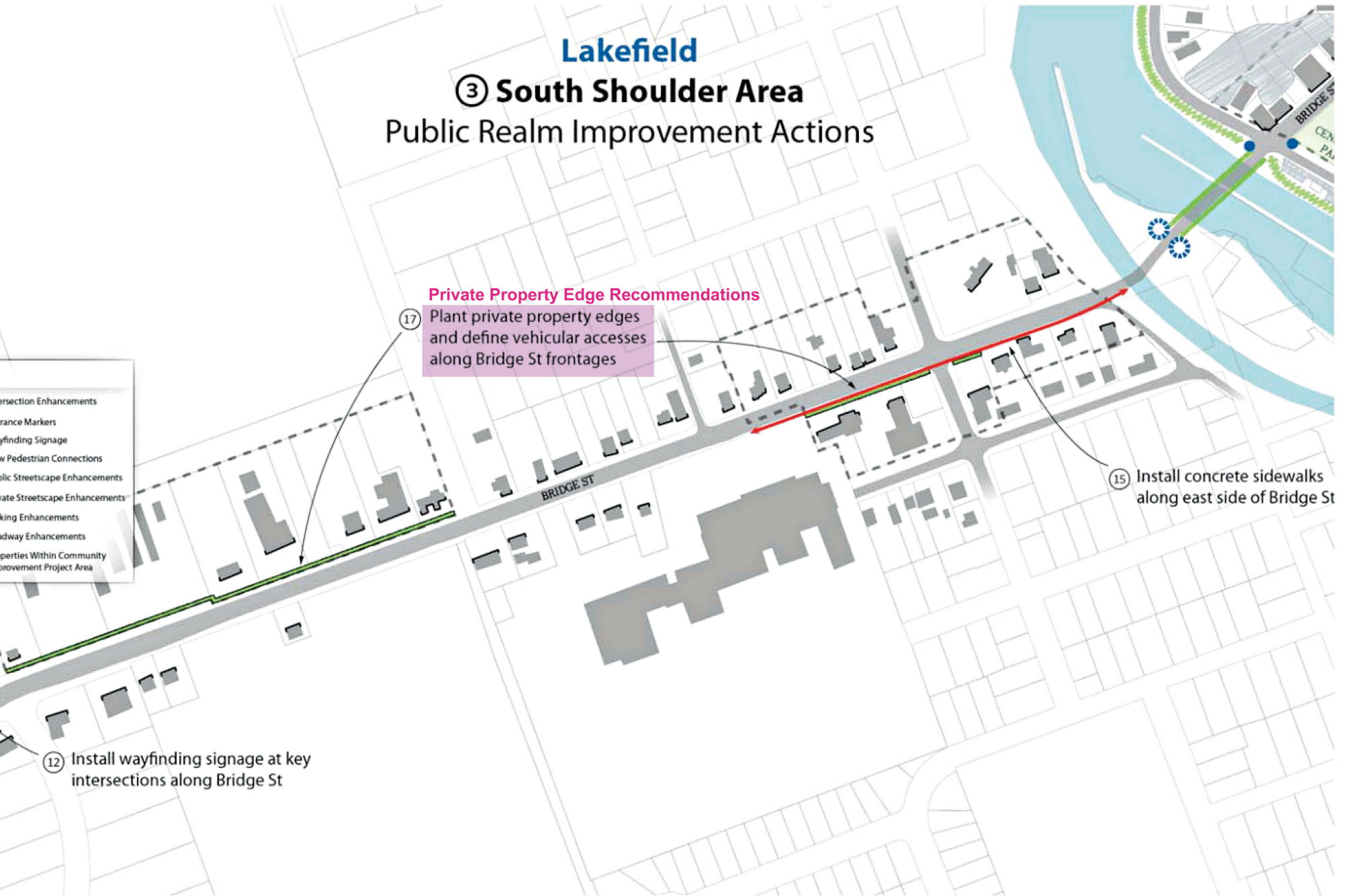
Private Property Edge Recommendations

Plant private property edges
and define vehicular accesses
along Bridge St frontages

⑮ Install concrete sidewalks
along east side of Bridge St

⑫ Install wayfinding signage at key
intersections along Bridge St

Intersection Enhancements
Wayfinding Signage
New Pedestrian Connections
Public Streetscape Enhancements
Private Streetscape Enhancements
Bike Lane Enhancements
Bike Lane Enhancements
Properties Within Community
Improvement Project Area



Young's Point Public Realm Improvement Actions

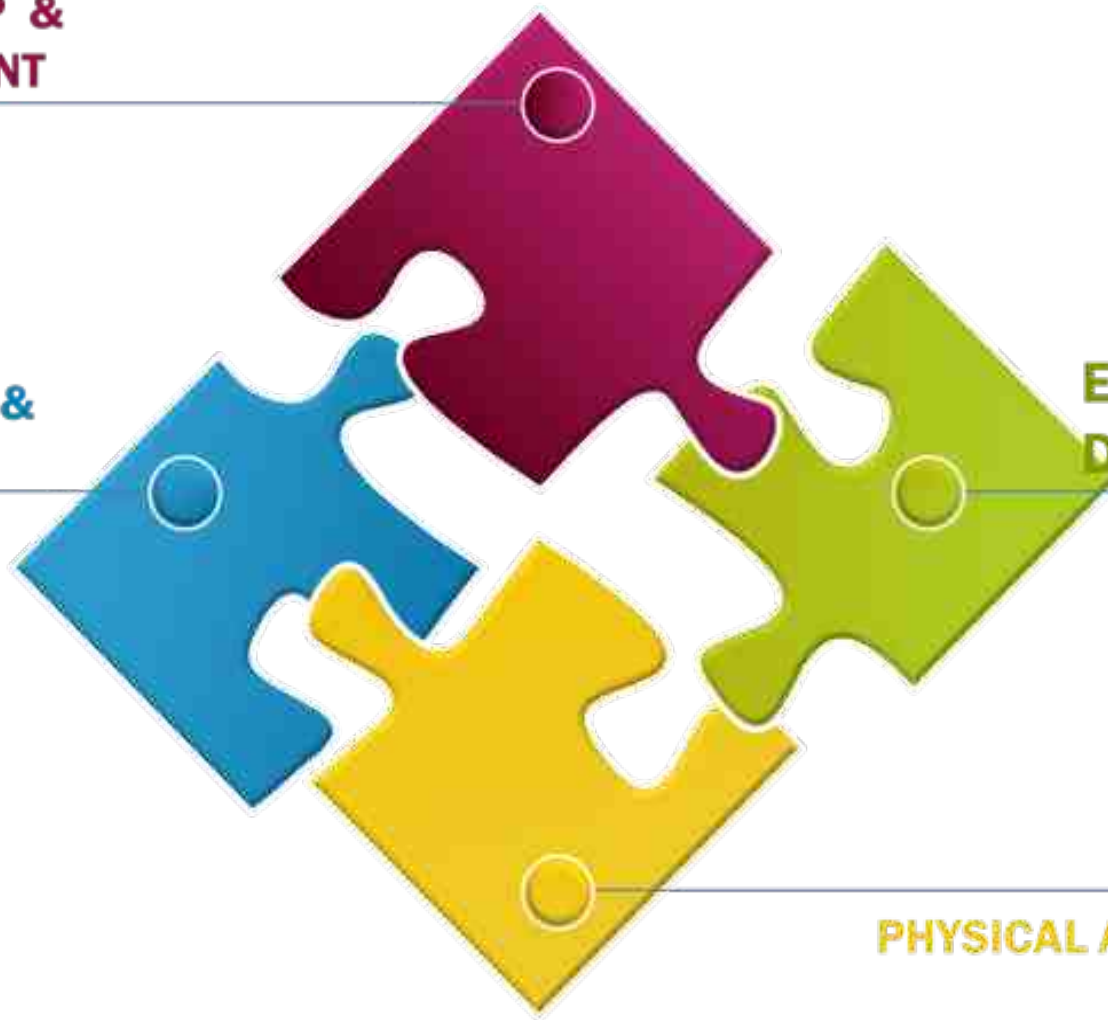


**LEADERSHIP &
MANAGEMENT**

**MARKETING &
PROMOTION**

**ECONOMIC
DEVELOPMENT**

PHYSICAL APPEARANCE





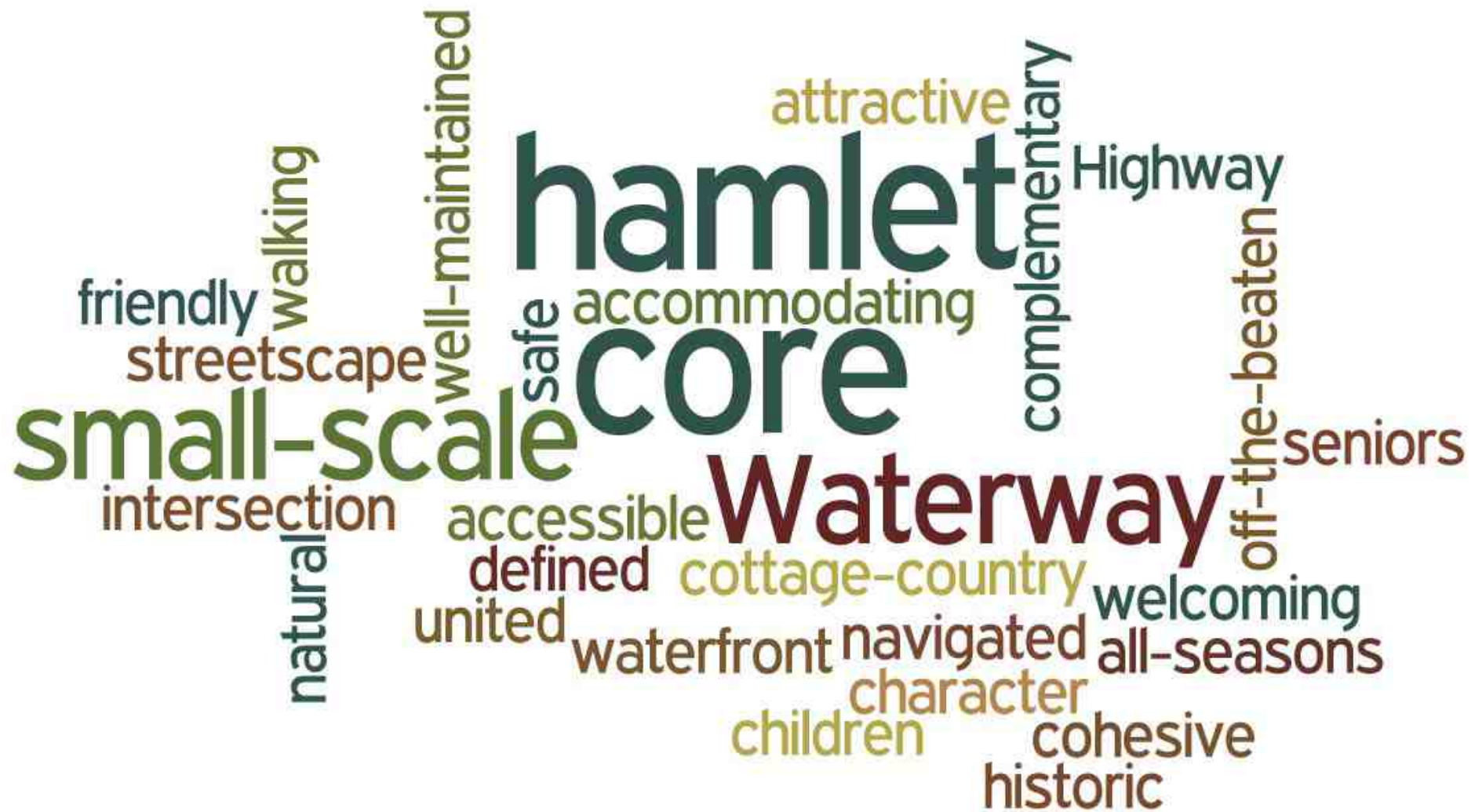
Design Primer

Your Visions

Your Guiding Principles

Function & Beautification

Young's Point Vision



Lakefield's Vision



Guiding Principles for Selwyn Communities

1. **Small-scale:** new developments and improvements to existing buildings that reinforce the existing small-scale, fine-grained nature of the core areas in terms of building size and form.
2. **Connected:** new developments and site improvements that are designed be connected with the surrounding community in terms of pedestrian and vehicle linkages, main street linkages, and waterfront linkages.
3. **Traditional:** new buildings and improvements to existing buildings that are designed to fit with the traditional style and character of heritage buildings within the core areas in terms of façade proportions, rhythm, and balance.
4. **Green:** new developments and site improvements that are designed to enhance the “greenness” of the community through landscape additions that soften the visual appearance of the core area.

5. **Complementary:** new developments and improvements to existing buildings that are designed to complement the existing architectural styles within the core areas and not overshadow the existing character of the area.
6. **Character:** new developments and improvements to existing buildings that are designed to be in keeping with the intended character of the particular core area, whether a residential form, commercial form or mixed form of development.
7. **Precedent:** new buildings and improvements to existing buildings that are designed using the best built form and architecture examples within the particular core area as guidance.
8. **Sustainable:** new developments and improvements that are designed to incorporate sustainable practices and initiatives through the design of buildings and the layout of sites.



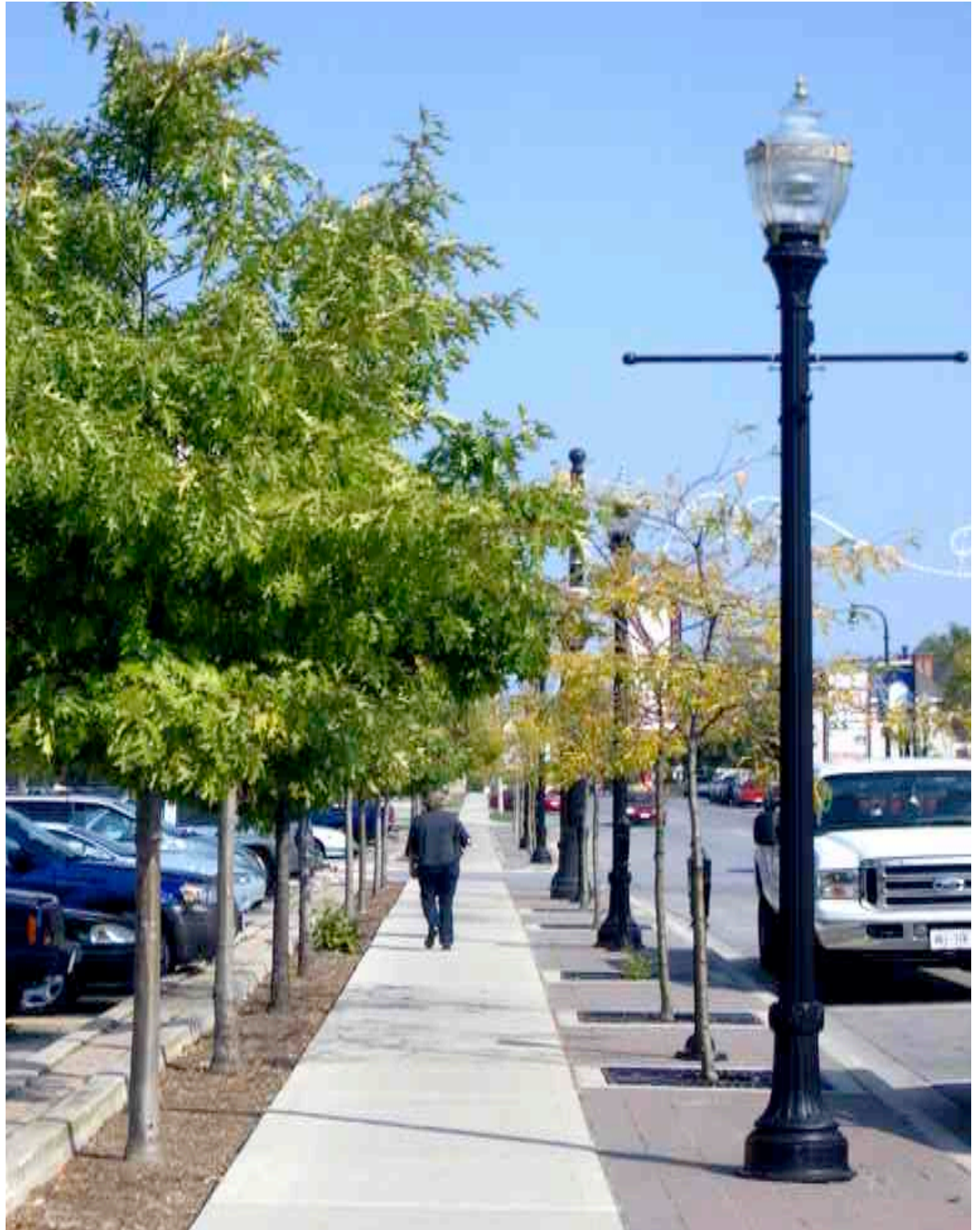
Achieving Function and Beautification



Define pedestrian walkways

Create physical and visual separations

Establish safe and memorable spaces



Create distinctive attractive features in the public spaces.
(Municipalities lead by example)



Design and build distinctive attractive features in the public spaces.



Public realm improvements stimulate private sector growth and improvement.



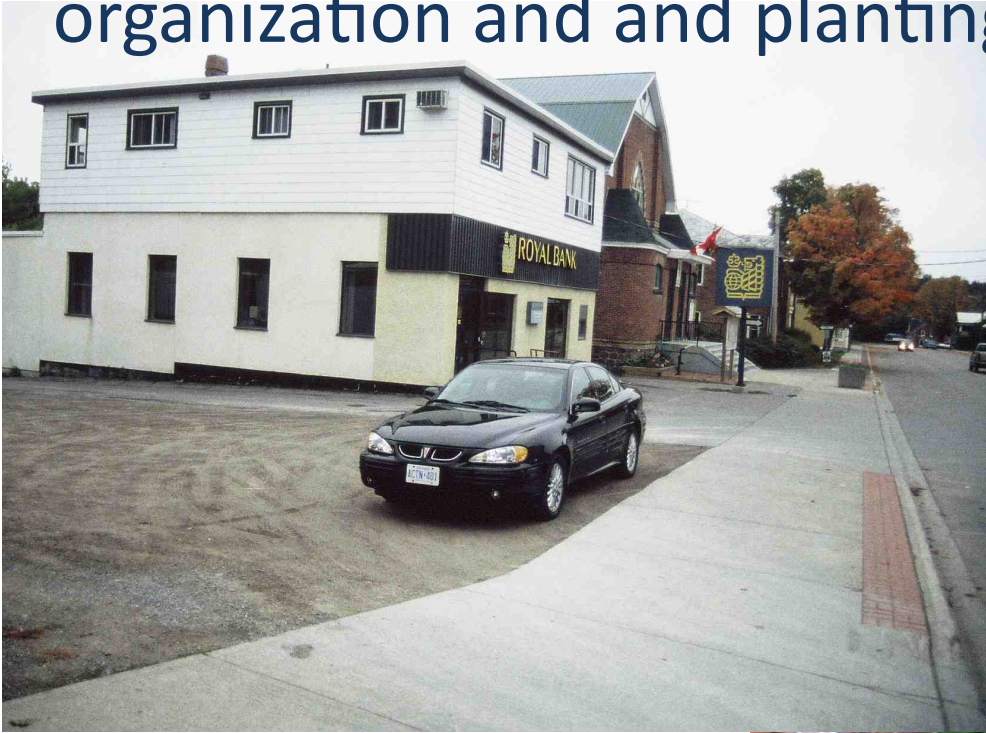
Initiatives for both environmental and human health.



Keep pedestrians safe and comfortable.



Keep pedestrians safe and comfortable with spacial organization and and planting buffers.



Direct new positive development to Downtowns and Village Centres.





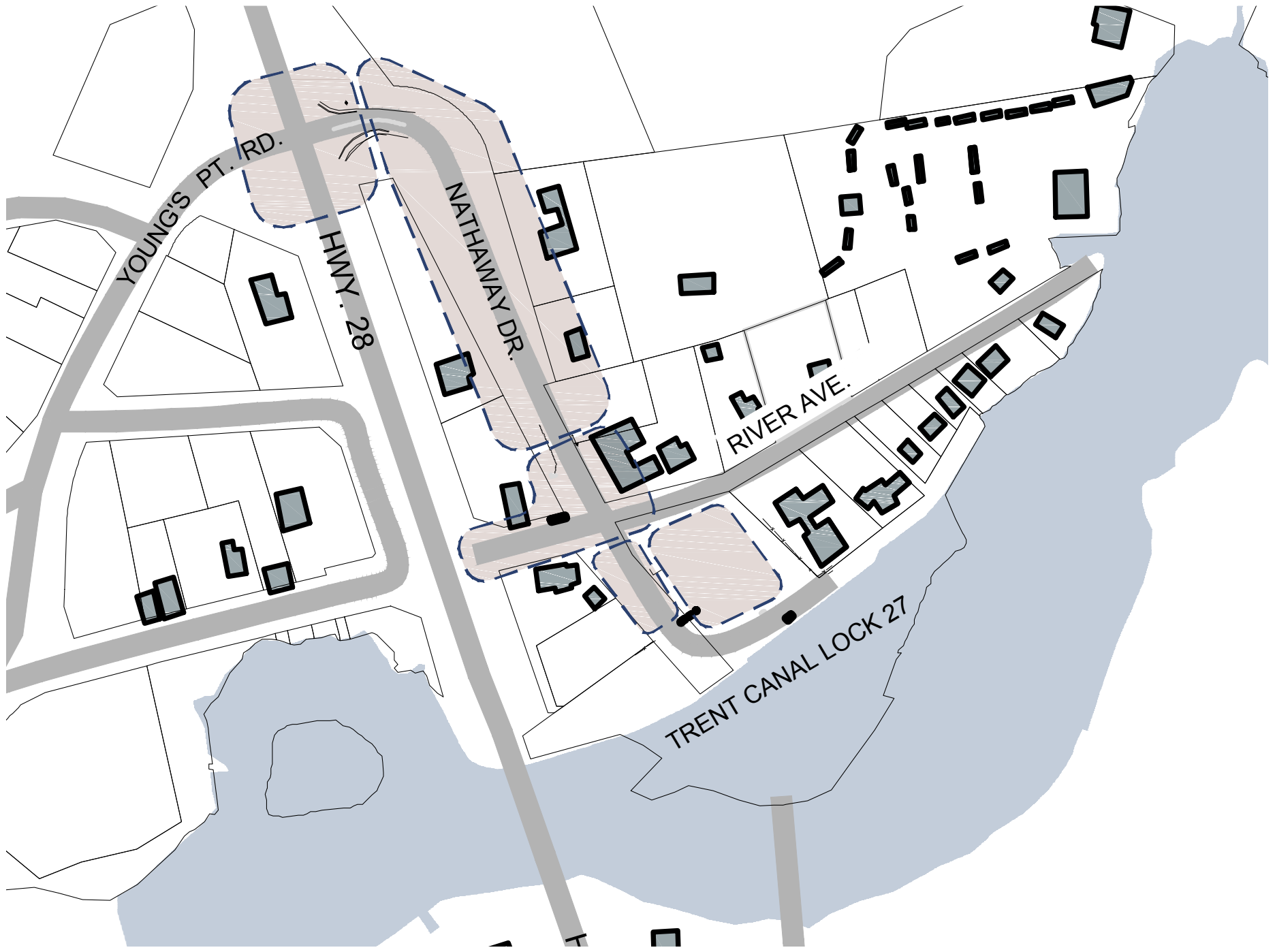
Workshop Format

- Presentation of design concepts
- Visit workshop stations and fill out the associated worksheet questions. Take your time to view the drawings. Use the back of the page if you have anything else to add.
- Stay on track and focused time is limited
- Stay and socialize for 10 minutes
- We will then report back to you on emerging trends and ideas
- You can also email more comments to:
Meaghan McGowan commdev@nexicom.net
- Look on the website for a more detailed tabulation of results

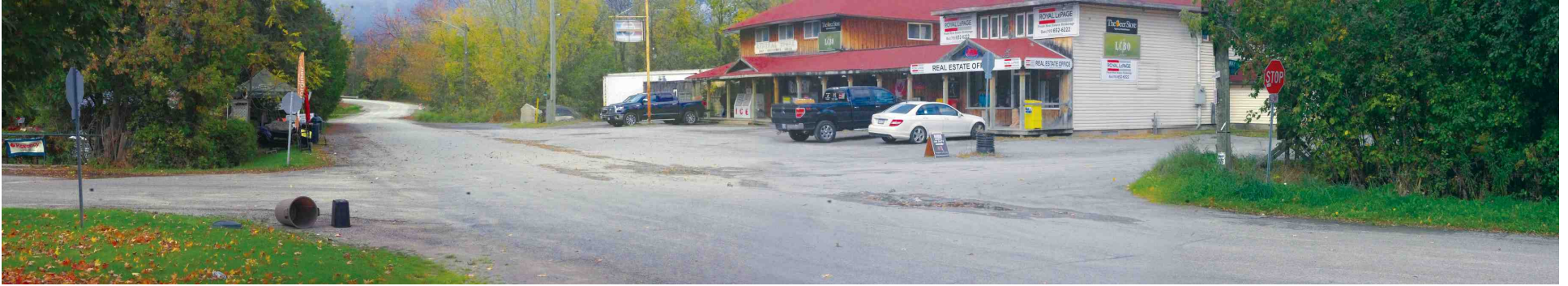
Young's Point

1. Context
2. Existing Conditions
3. Concept Plan & Illustration(s)

Context



Nathaway & River Intersection



Nathaway & River Intersection

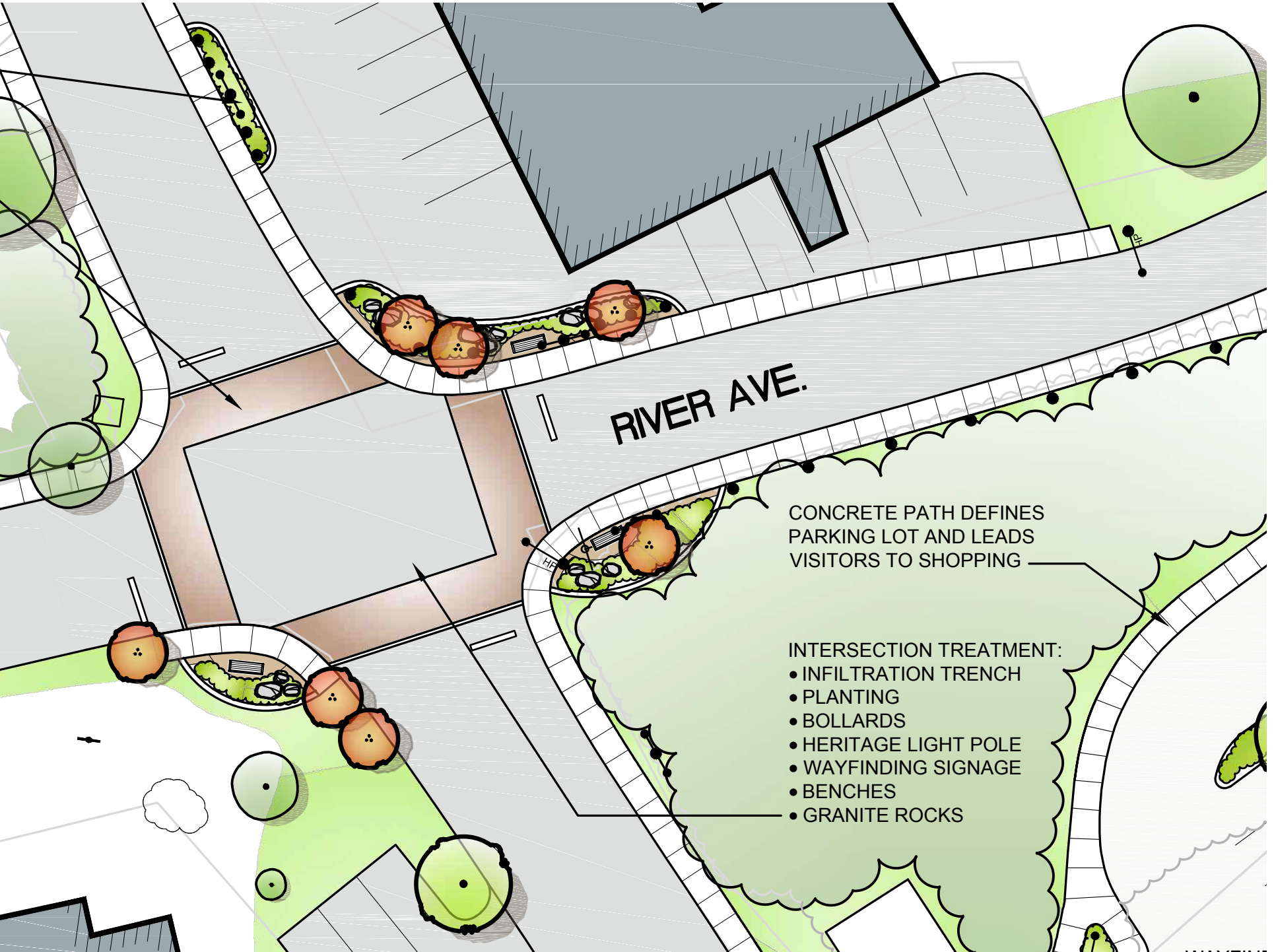


Nathaway & River Intersection



Nathaway & River Intersection





RIVER AVE.

CONCRETE PATH DEFINES
PARKING LOT AND LEADS
VISITORS TO SHOPPING

INTERSECTION TREATMENT:

- INFILTRATION TRENCH
- PLANTING
- BOLLARDS
- HERITAGE LIGHT POLE
- WAYFINDING SIGNAGE
- BENCHES
- GRANITE ROCKS

Nathaway & River Intersection



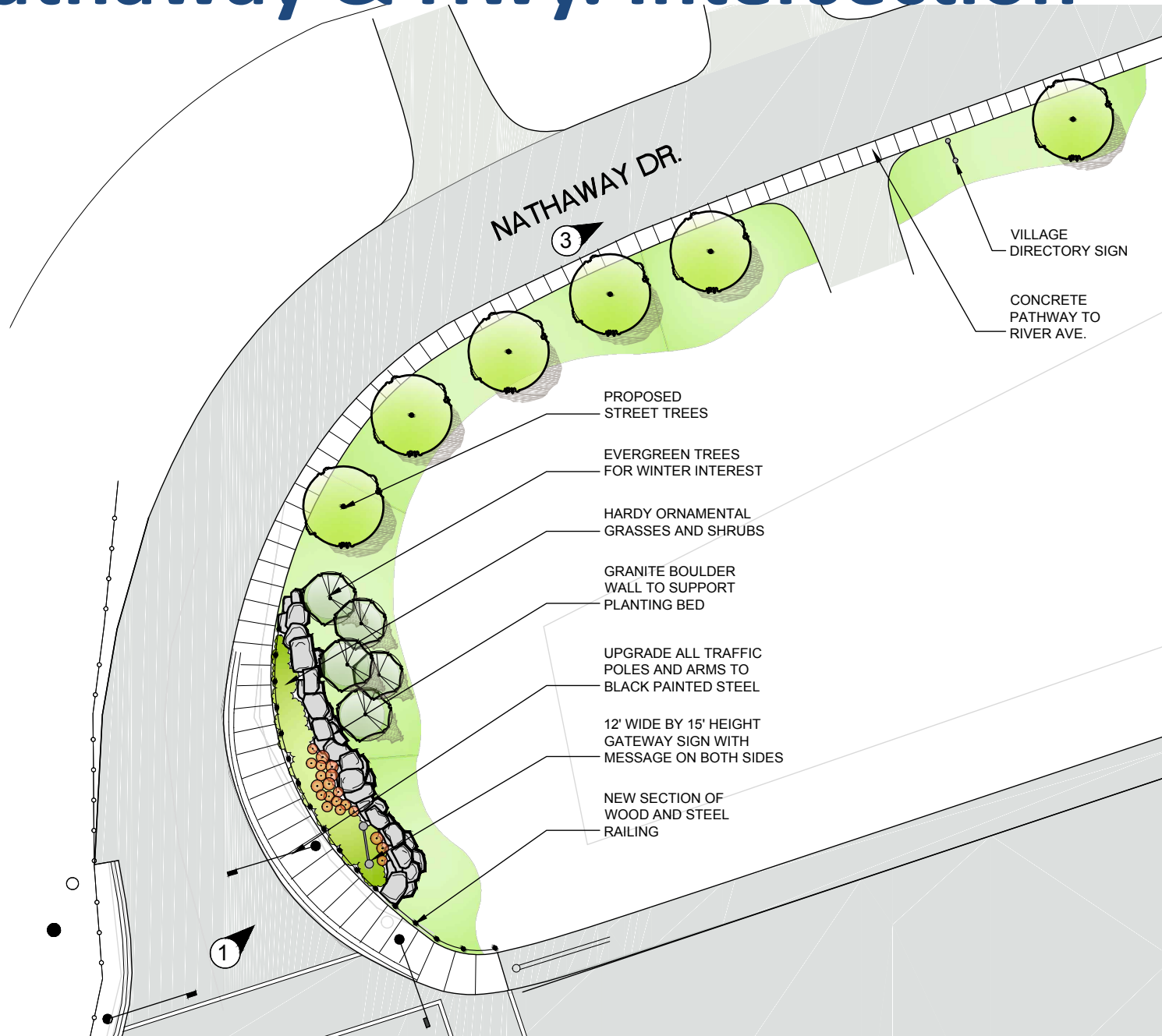
Nathaway & Hwy. Intersection



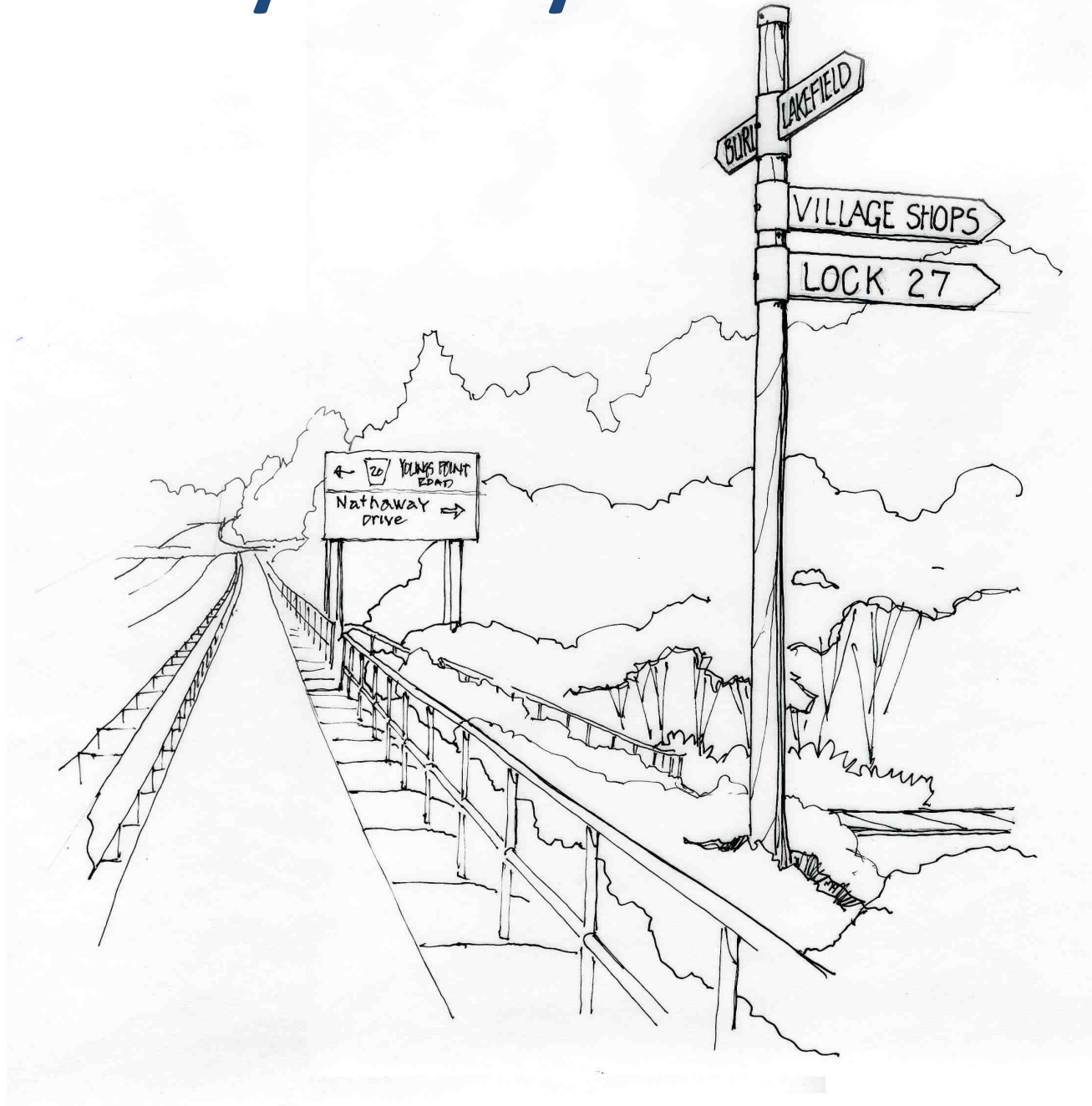
Nathaway & Hwy. Intersection



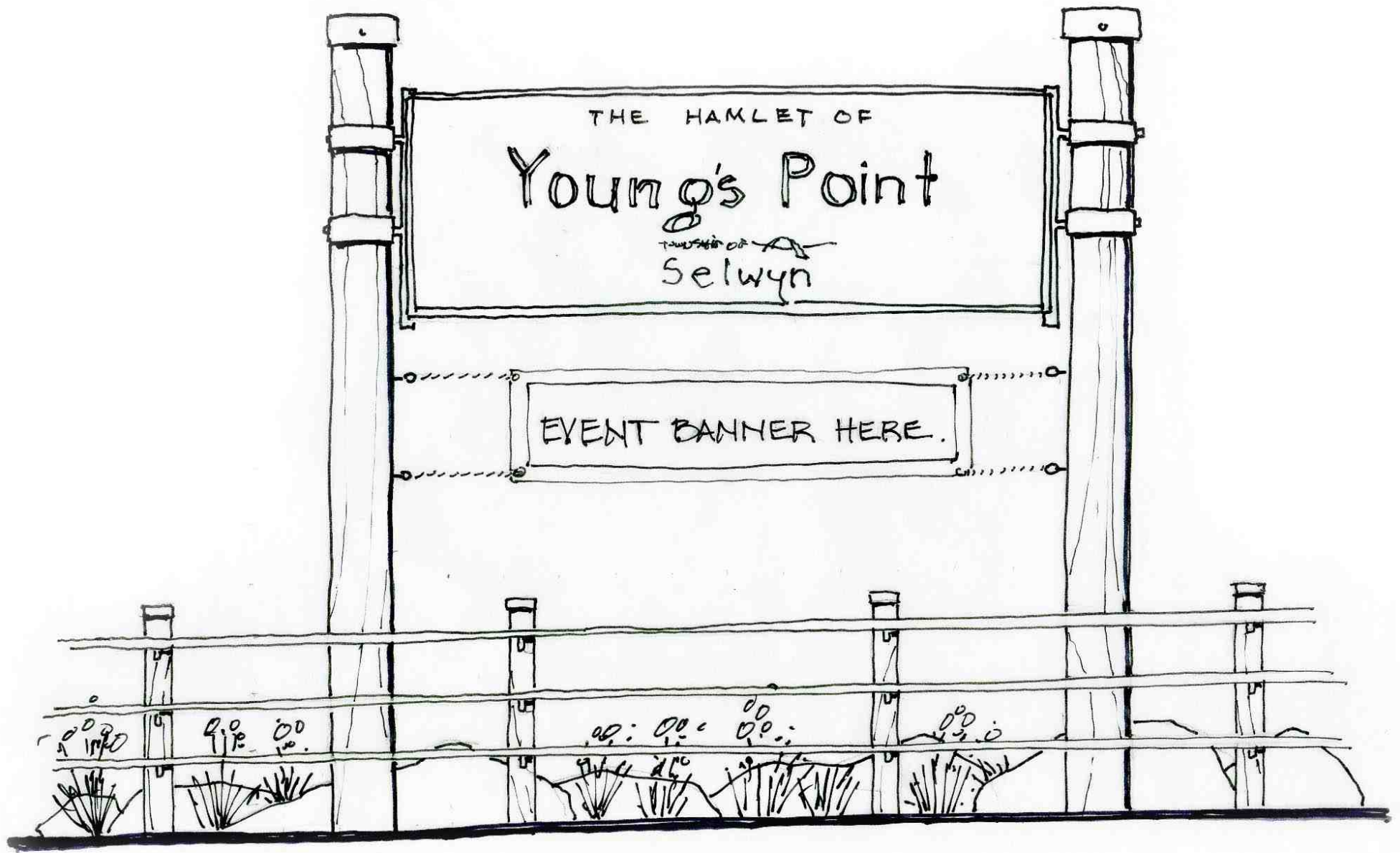
Nathaway & Hwy. Intersection



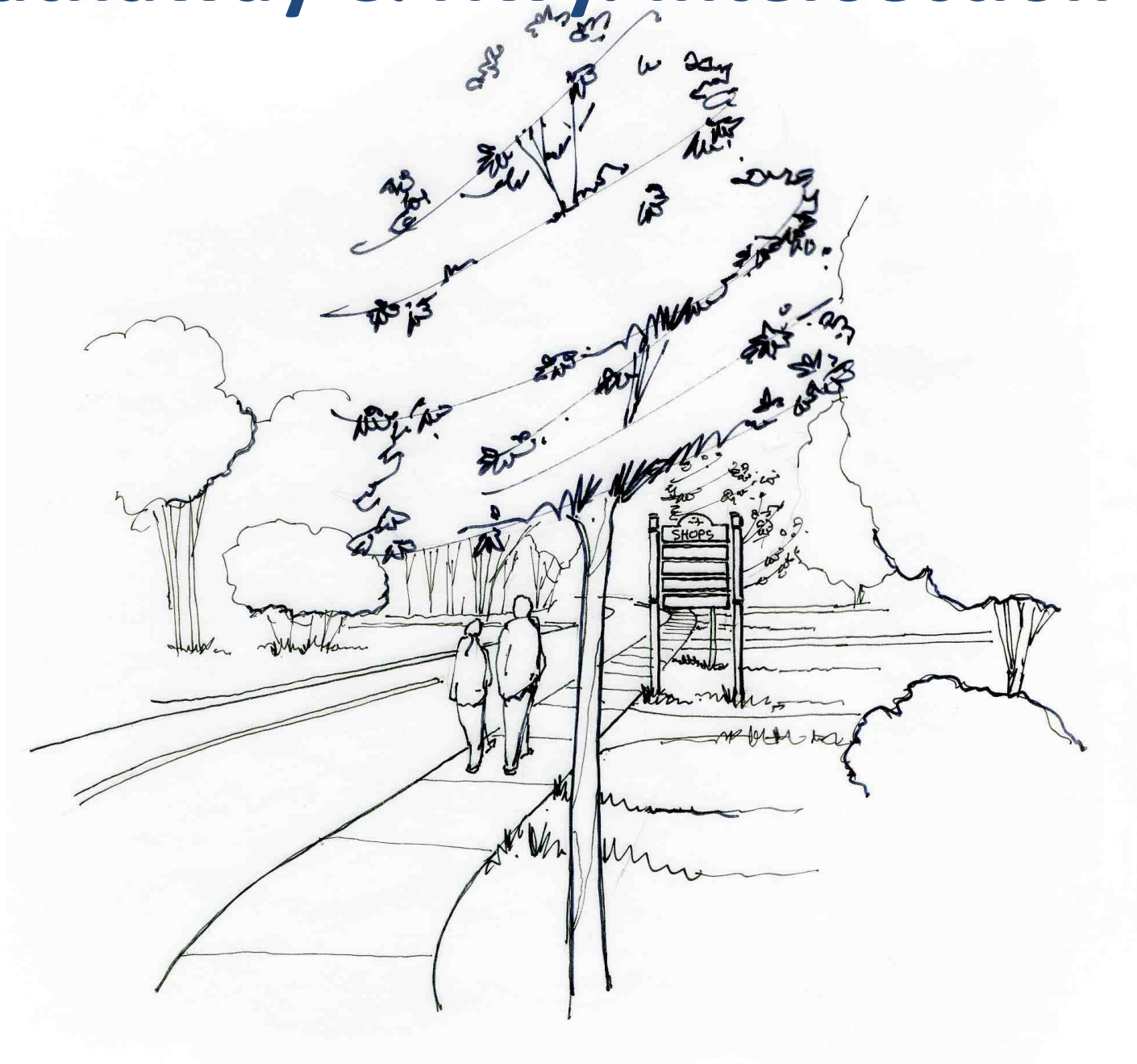
Nathaway & Hwy. Intersection



Nathaway & Hwy. Intersection



Nathaway & Hwy. Intersection

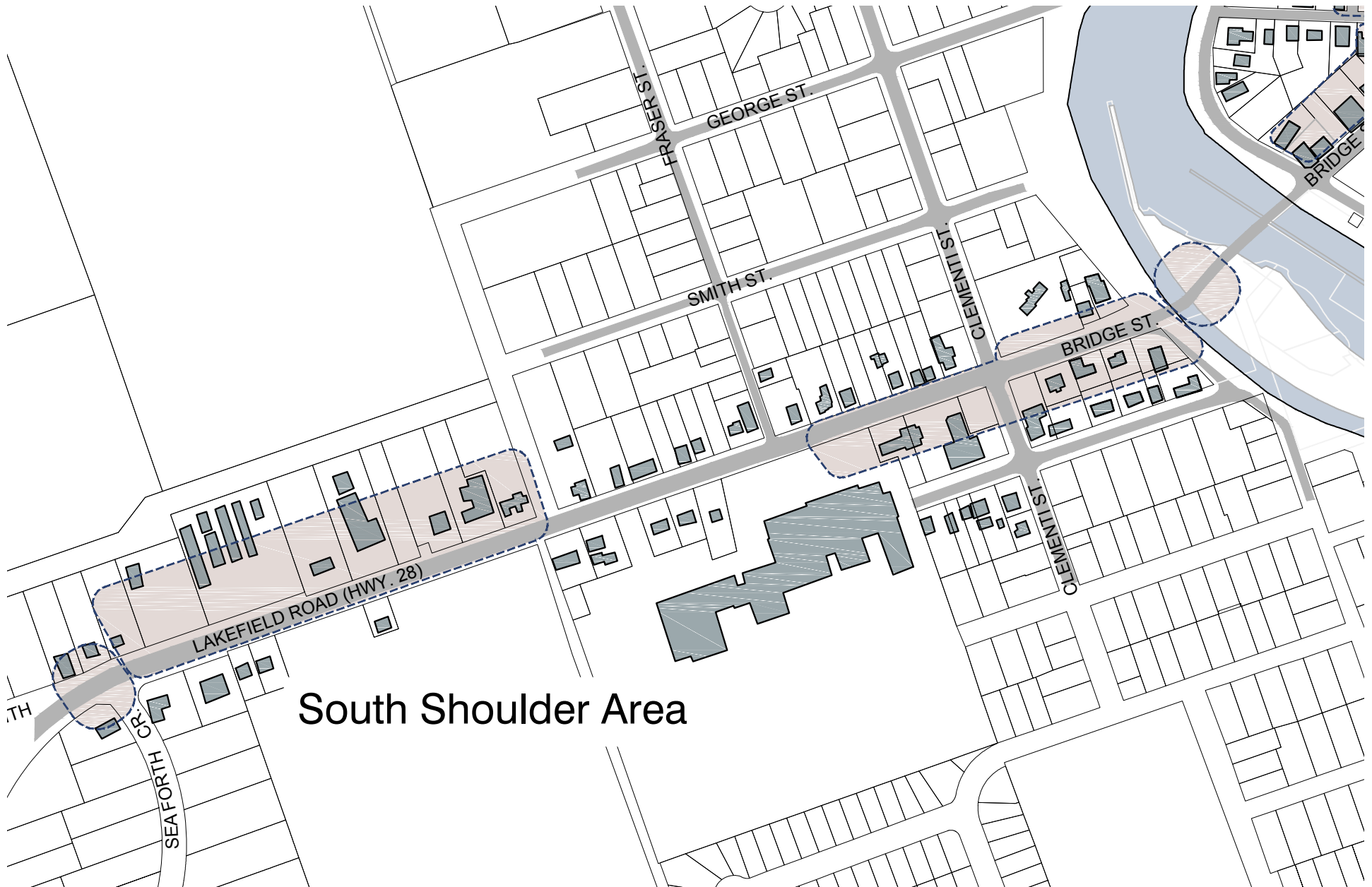




Lakefield South (Streetscape and Pedestrian Walkway, Clementi and Bridge Streets)

1. Context
2. Existing Conditions
3. Concept Plan & Illustrations

Context (Streetscape and Pedestrian Walkway and Clementi and Bridge Streets)



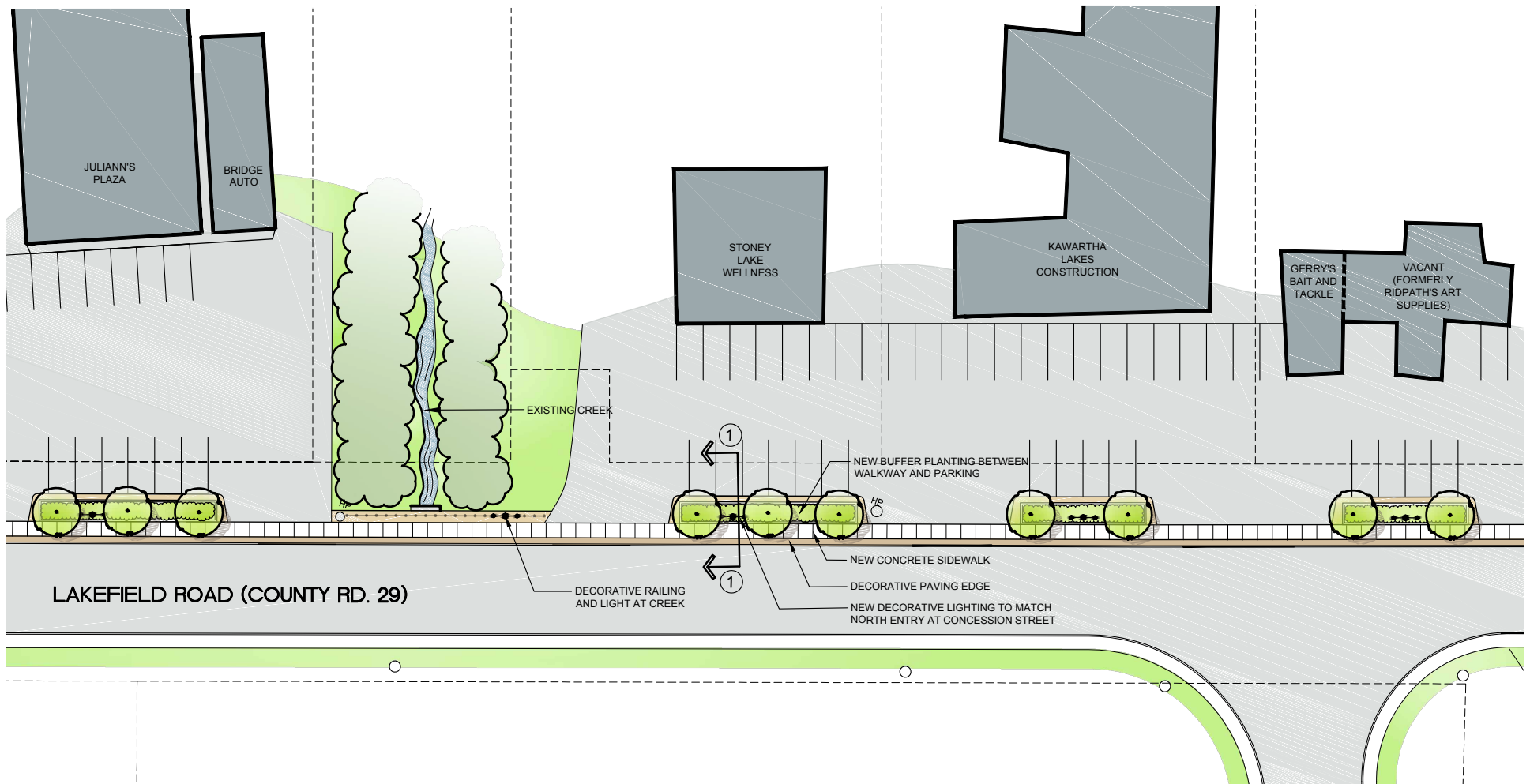




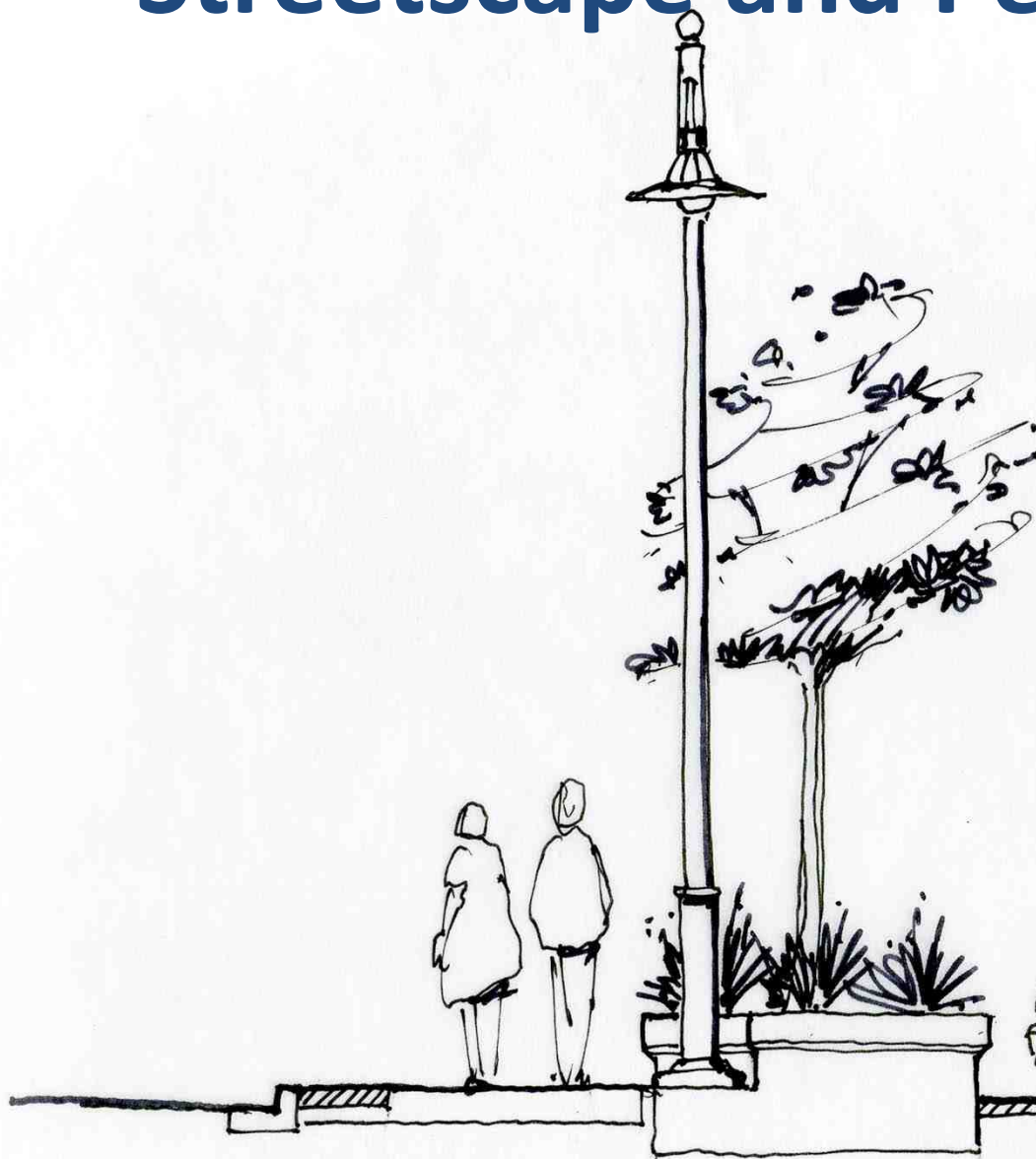




Streetscape and Pedestrian Walk

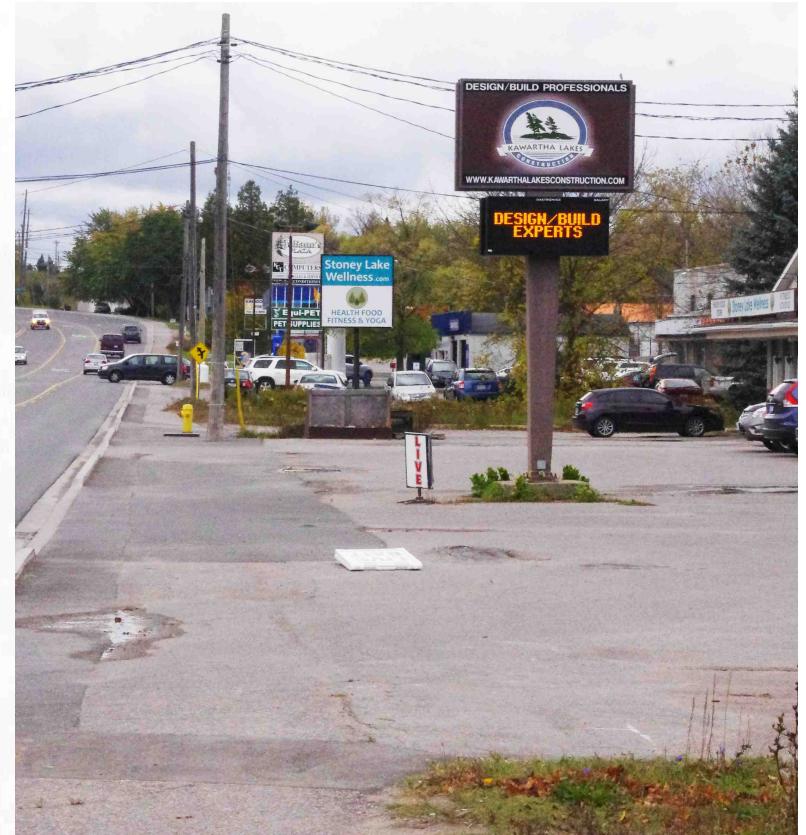


Streetscape and Pedestrian Walk



Cty. Road 29 New sidewalk

Planter and lighting

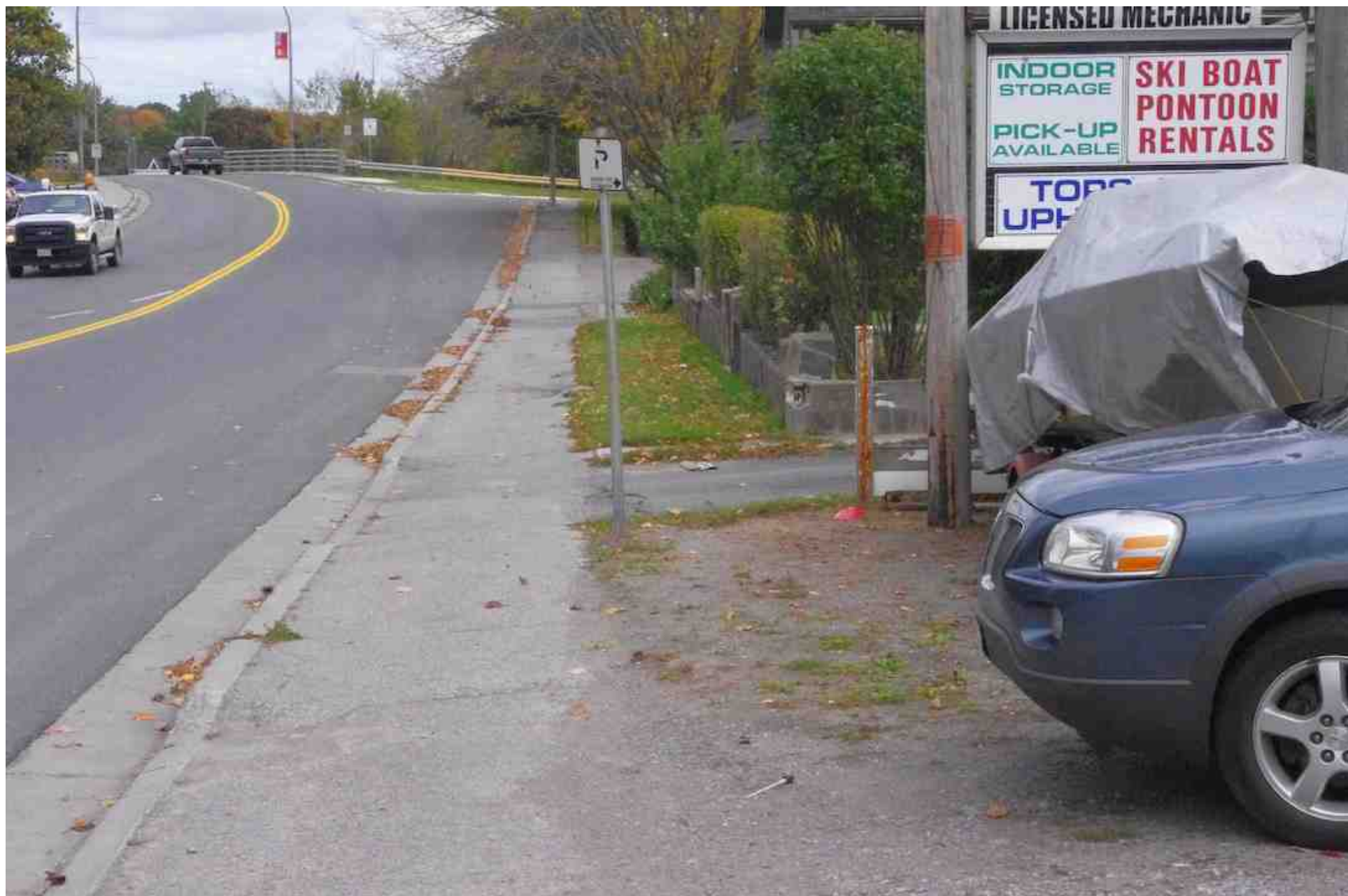


Private parking

Clementi & Bridge Streets

Clementi & Bridge Streets

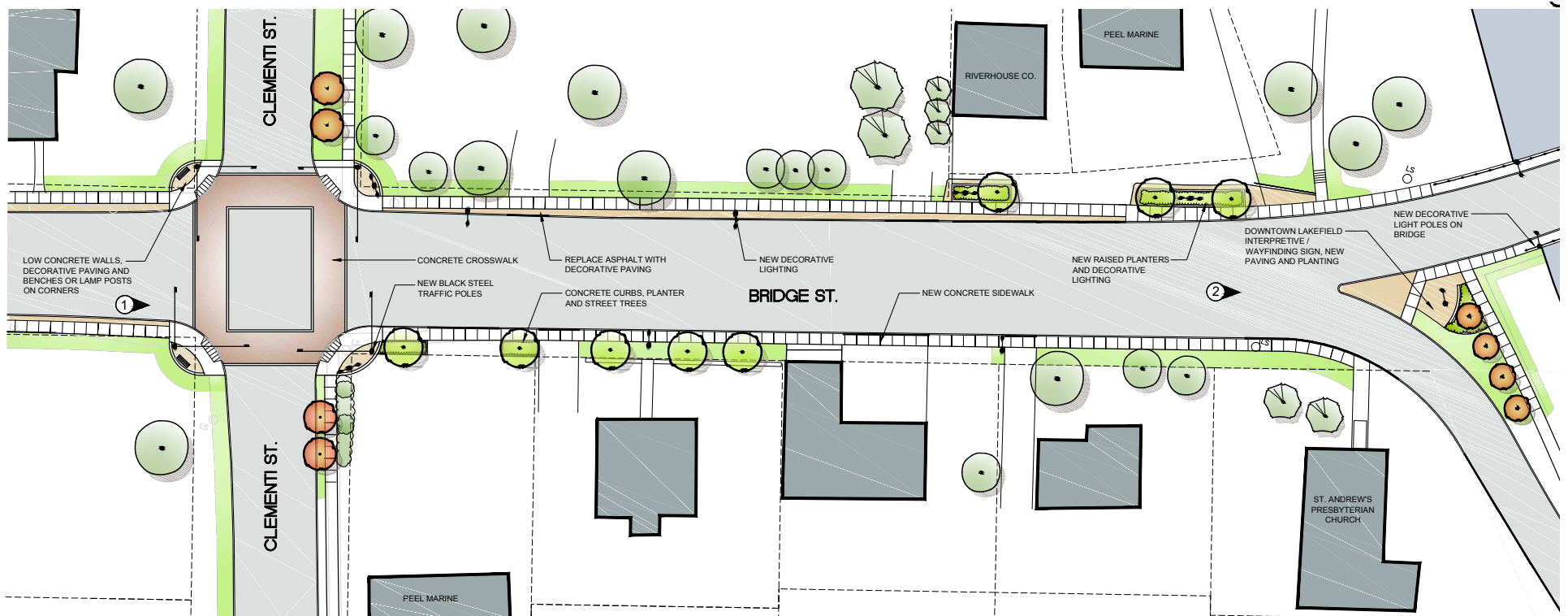




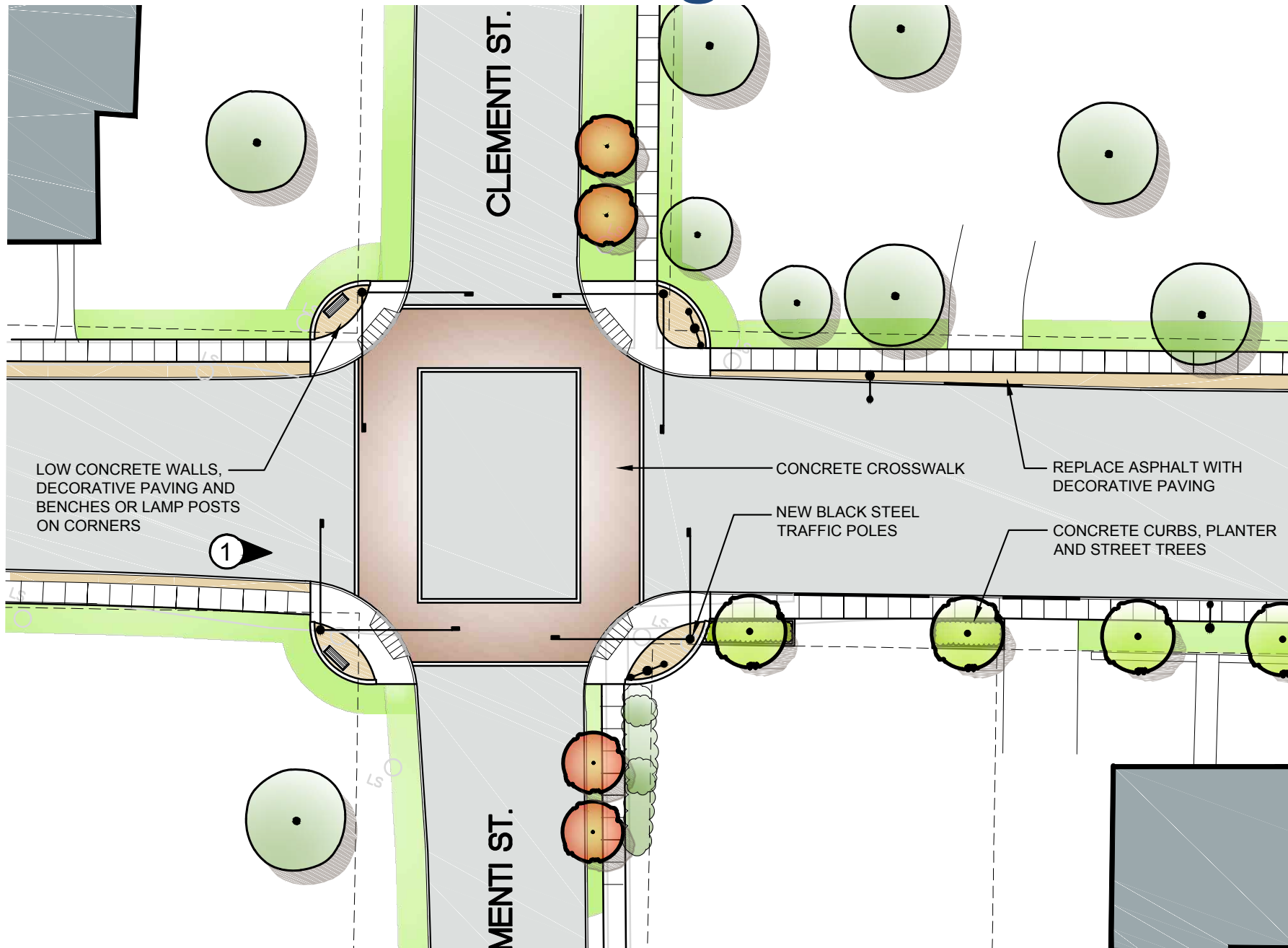




Clementi & Bridge Streets



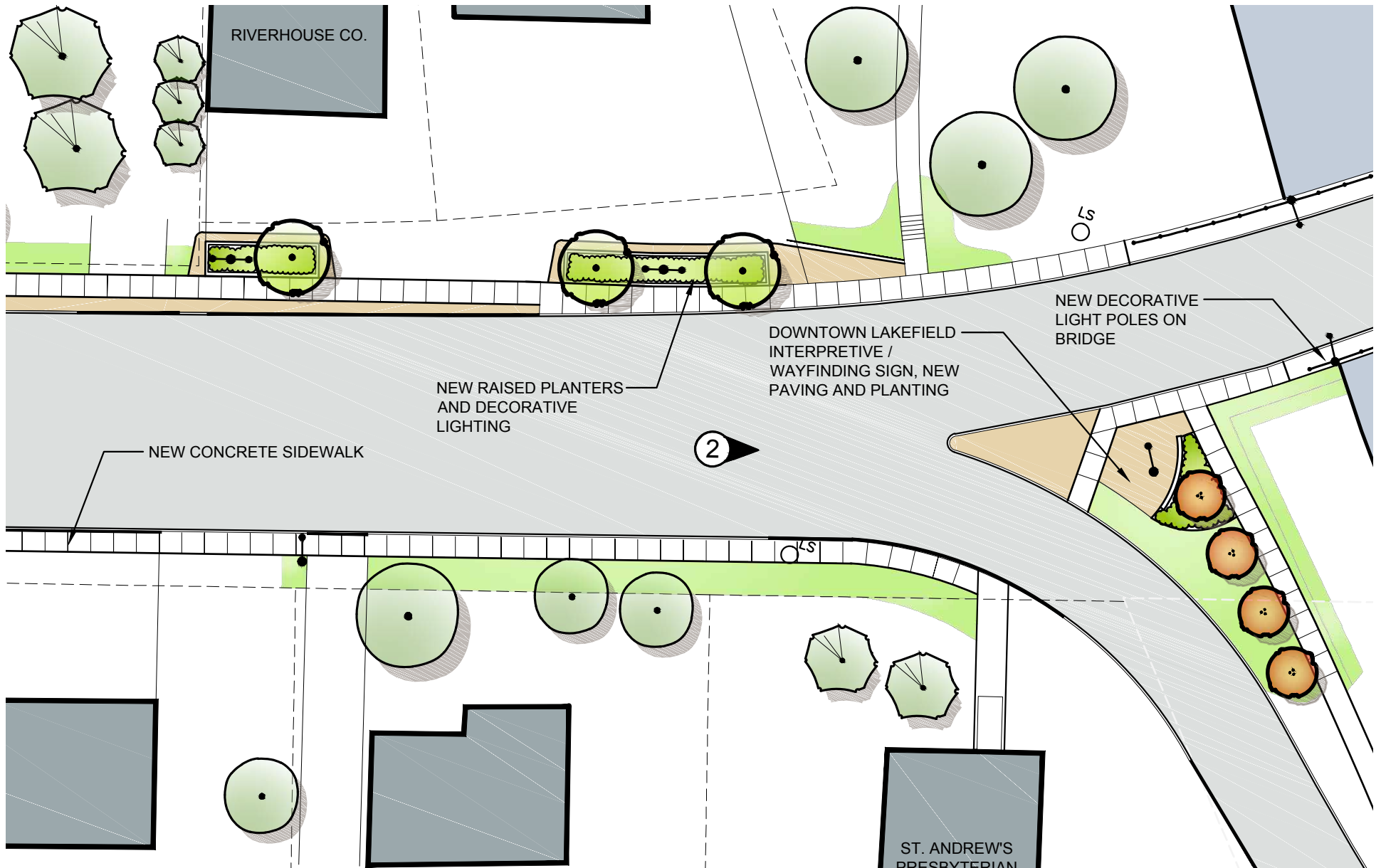
Clementi & Bridge Streets



Clementi & Bridge Streets



Clementi & Bridge Streets



Clementi & Bridge Streets

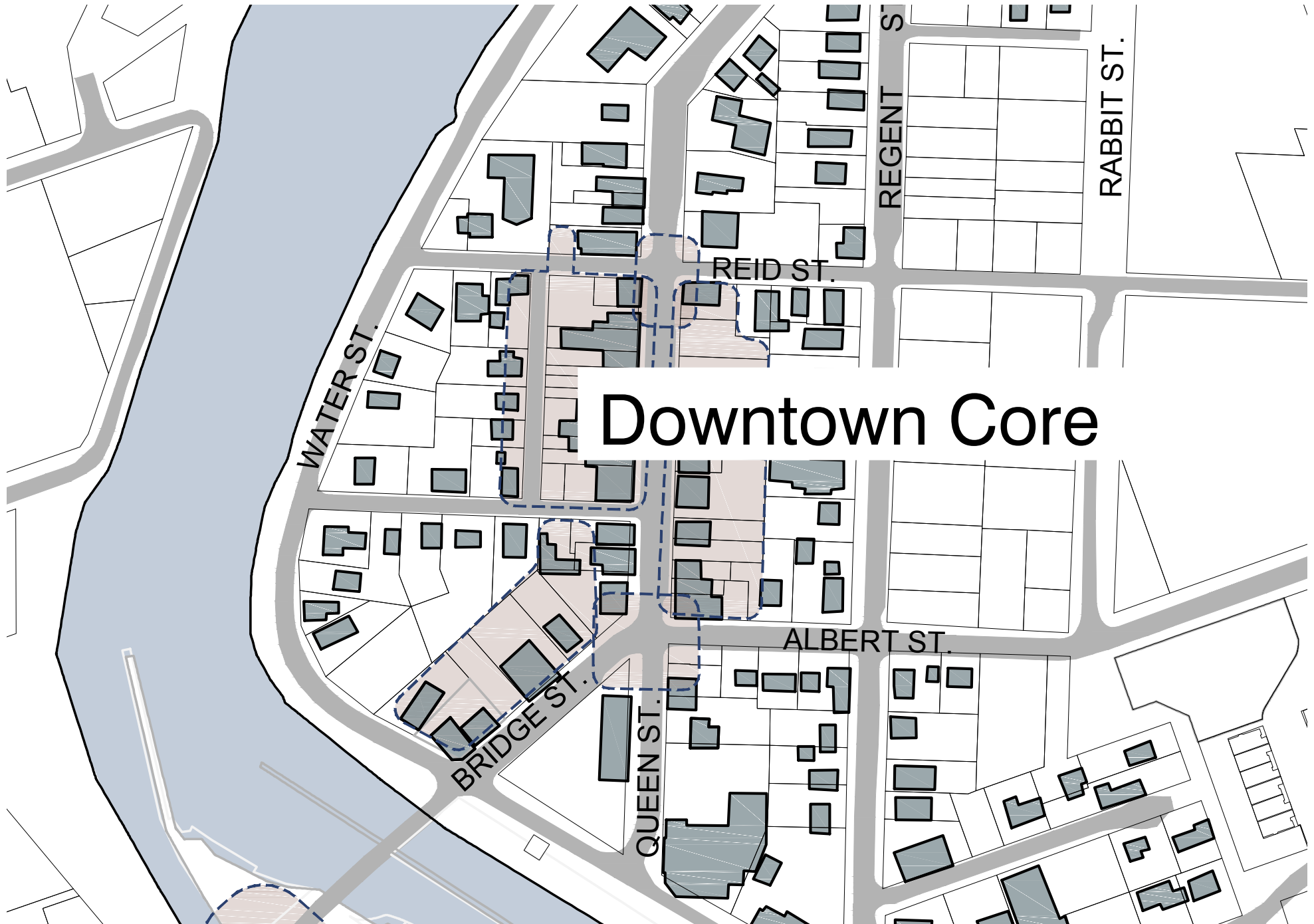




Lakefield Core

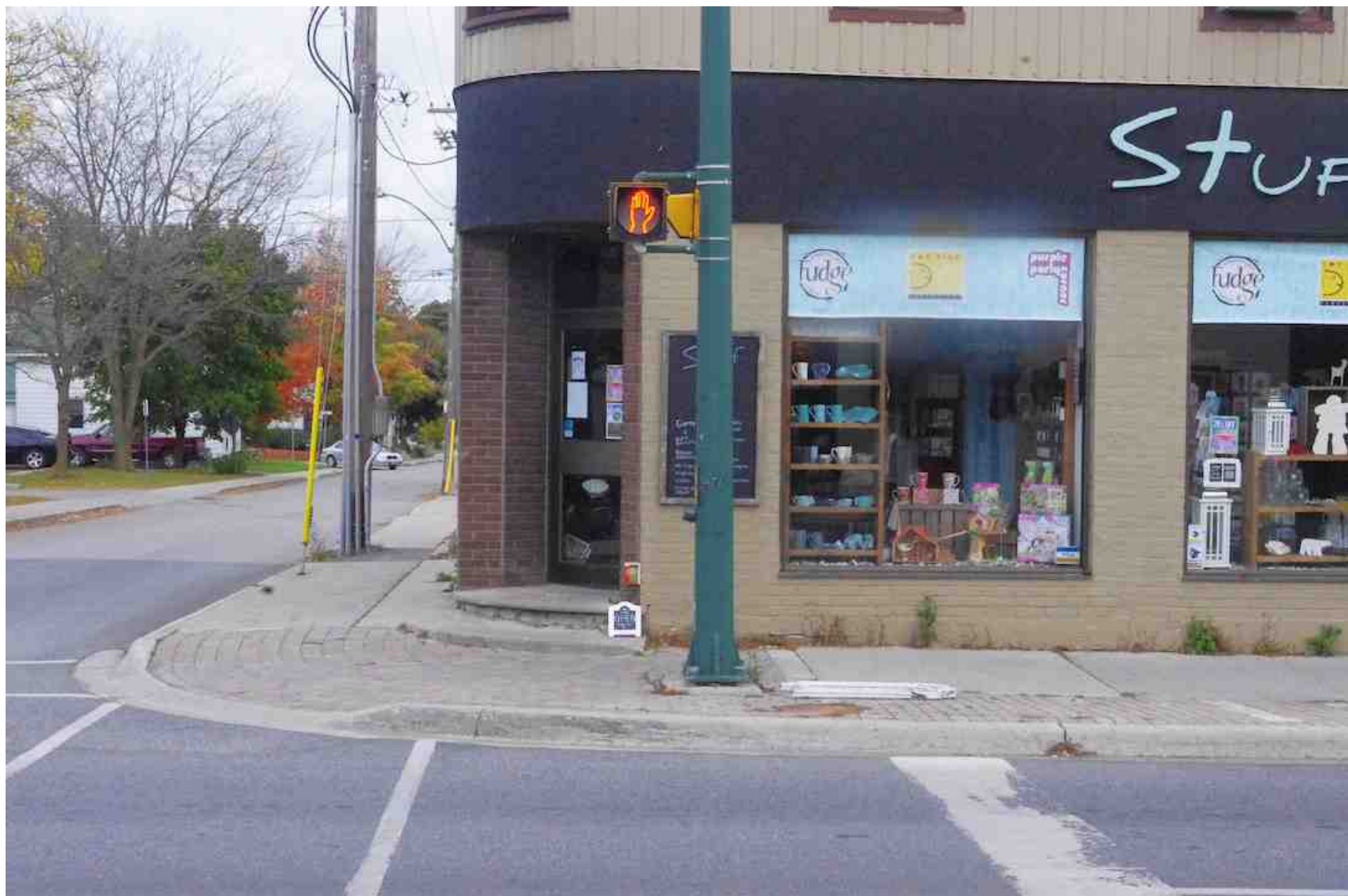
1. Context
2. Existing Conditions
3. Concept Plans & Illustrations

Context



Reid & Queen Streets



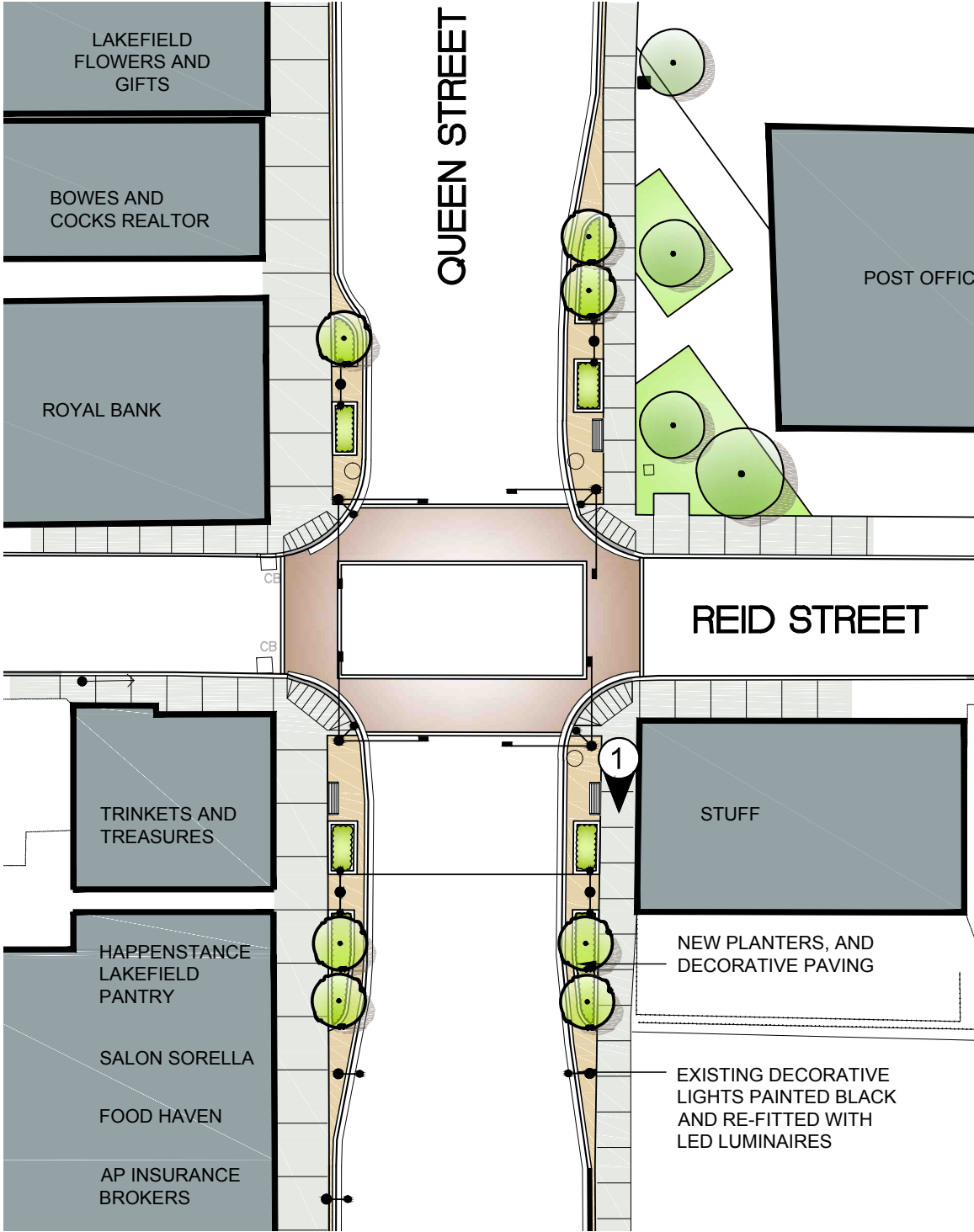








Reid & Queen Streets



Reid & Queen Streets



Queen & Albert Streets

Queen & Albert Streets











Queen & Albert Streets



Queen & Albert Streets



Queen Street Back Lot Parking

Queen Street Back Lot Parking

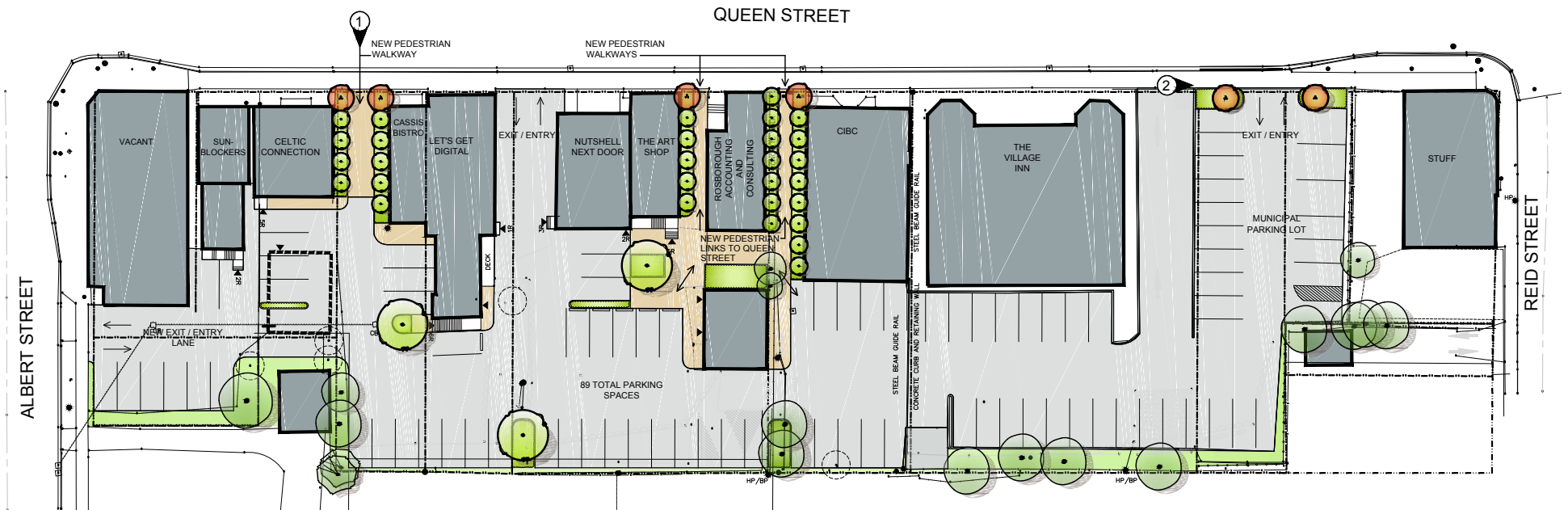






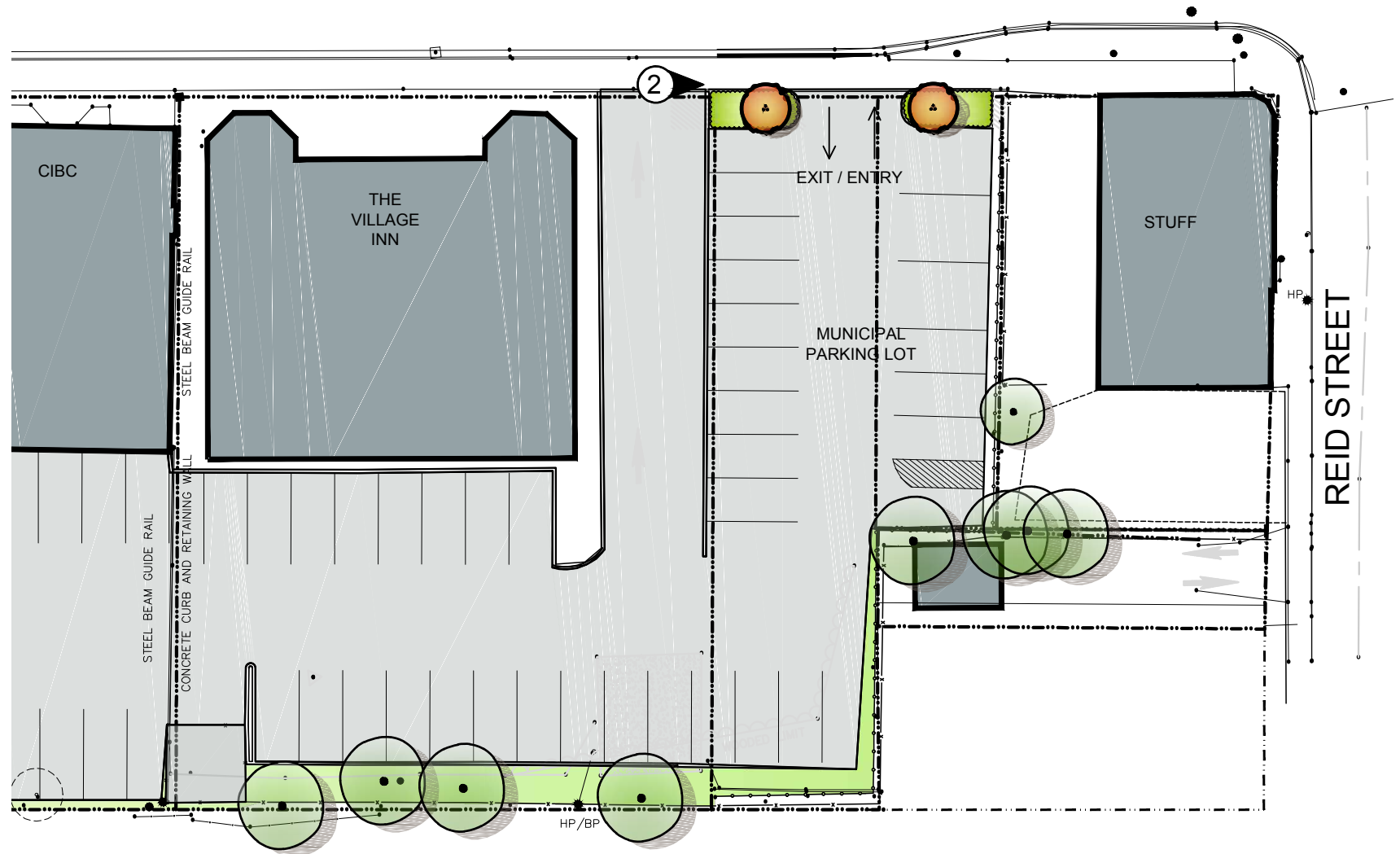


Queen Street Back Lot Parking

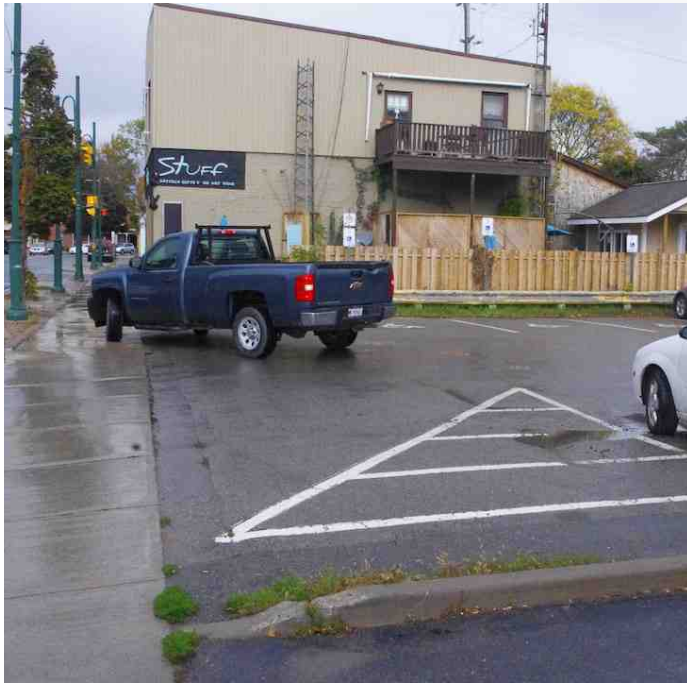


Queen Street Back Lot Parking

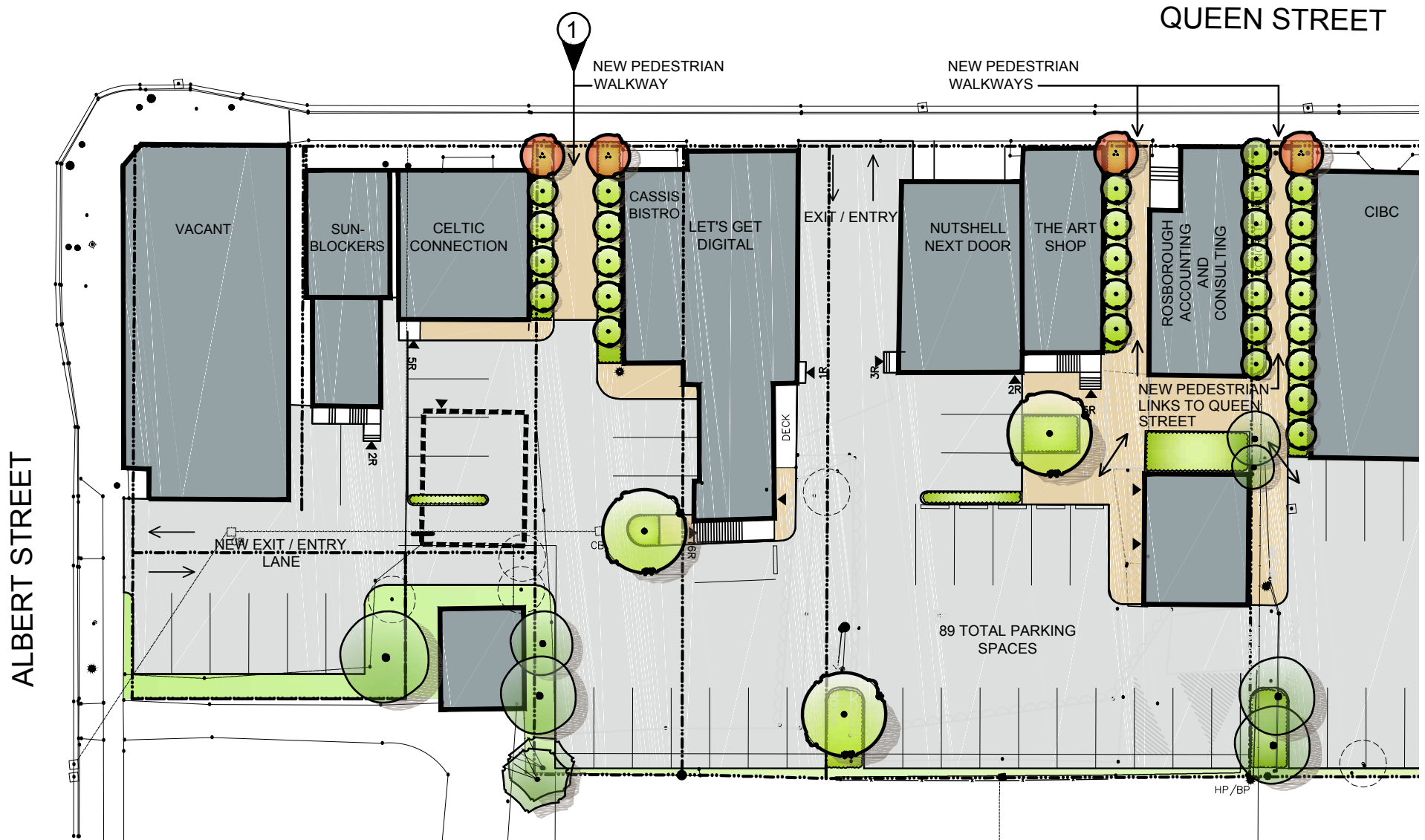
ET



Queen Street Back Lot Parking



Queen Street Back Lot Parking



Queen Street Back Lot Parking



Back Lot & Charlotte St. Boulevard

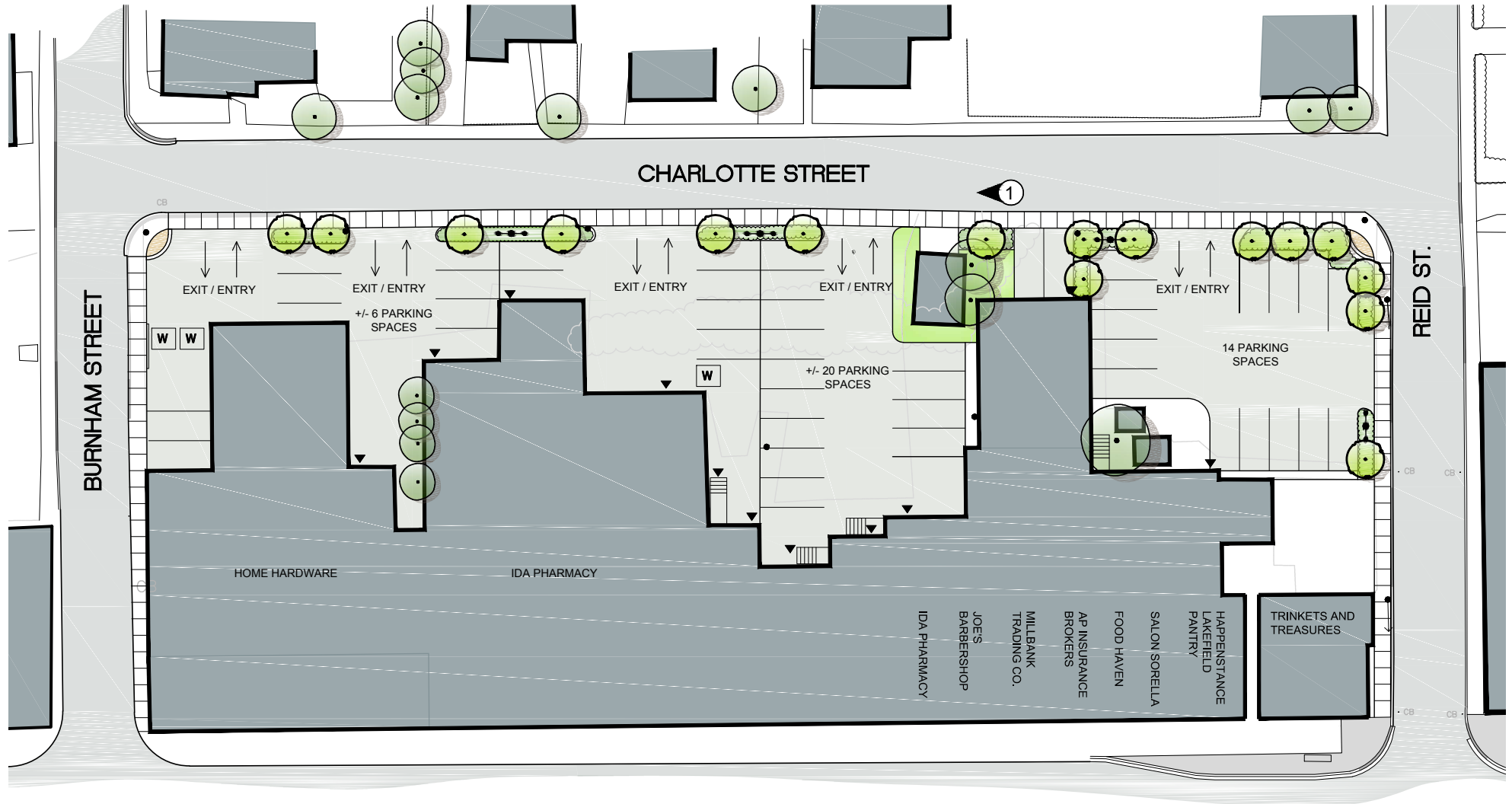
Back Lot & Charlotte St. Boulevard







Back Lot & Charlotte St. Boulevard



Back Lot & Charlotte St. Boulevard

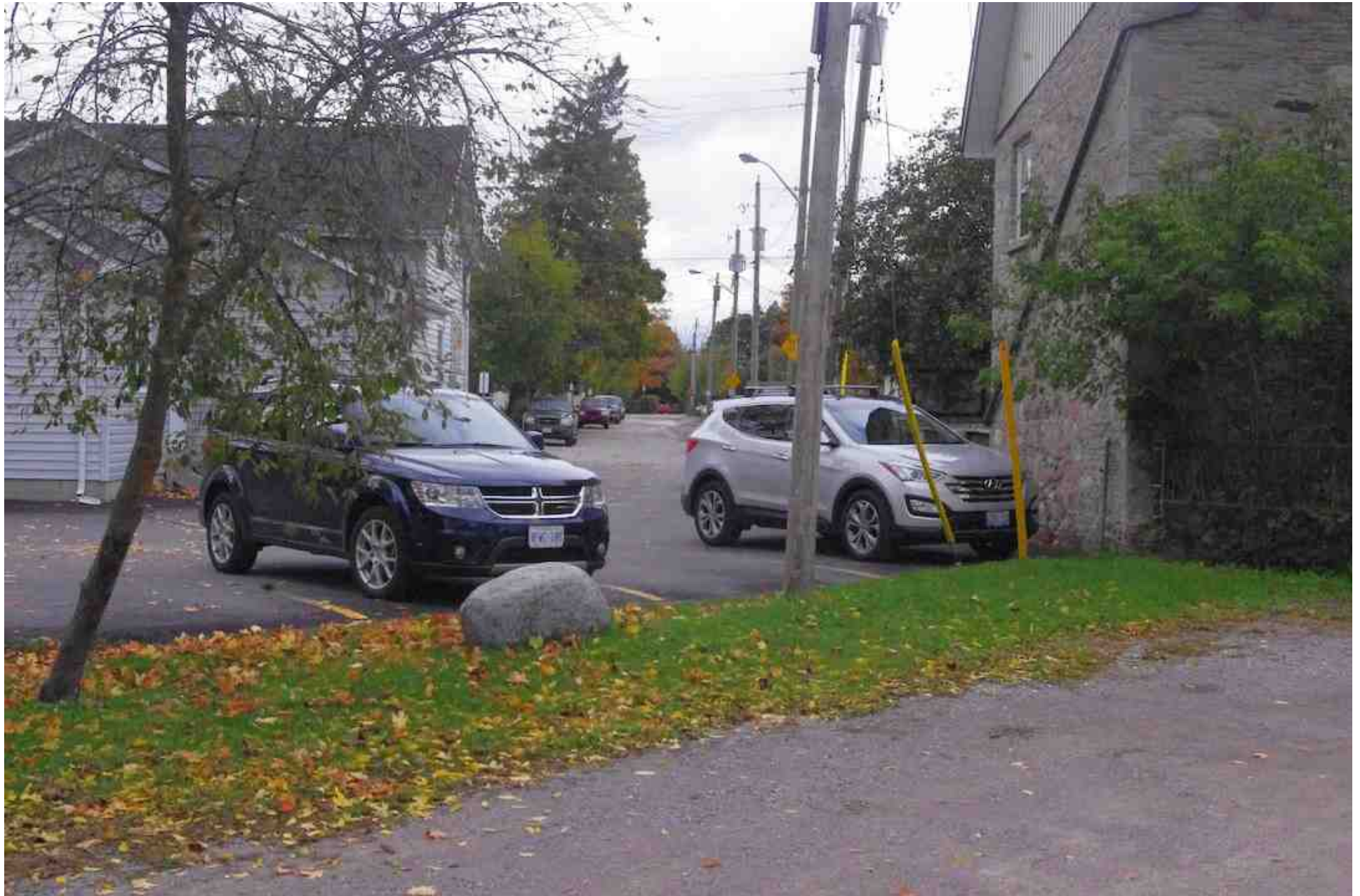


Bridge & Water St. Back Lot Parking

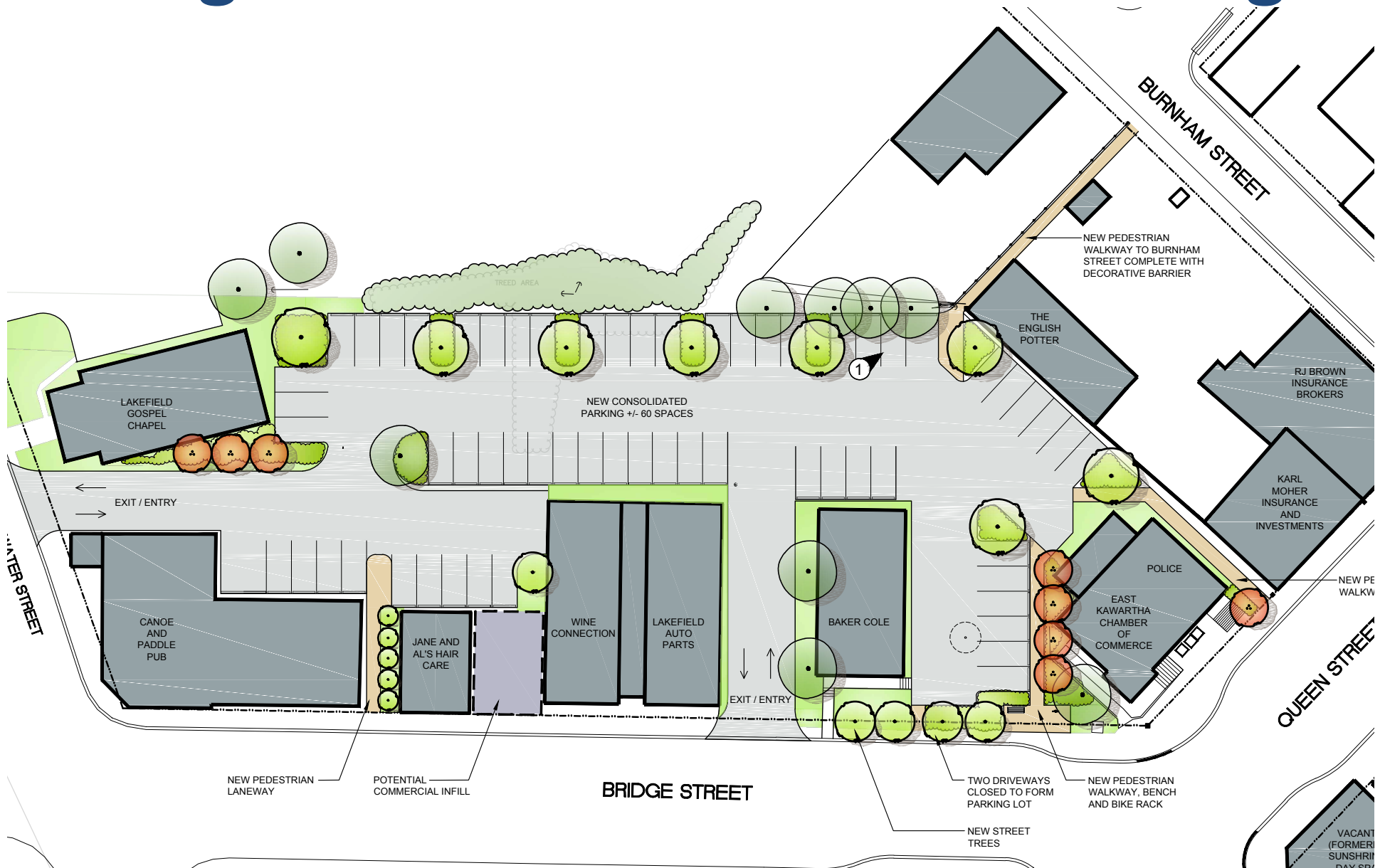
Bridge & Water St. Back Lot Parking



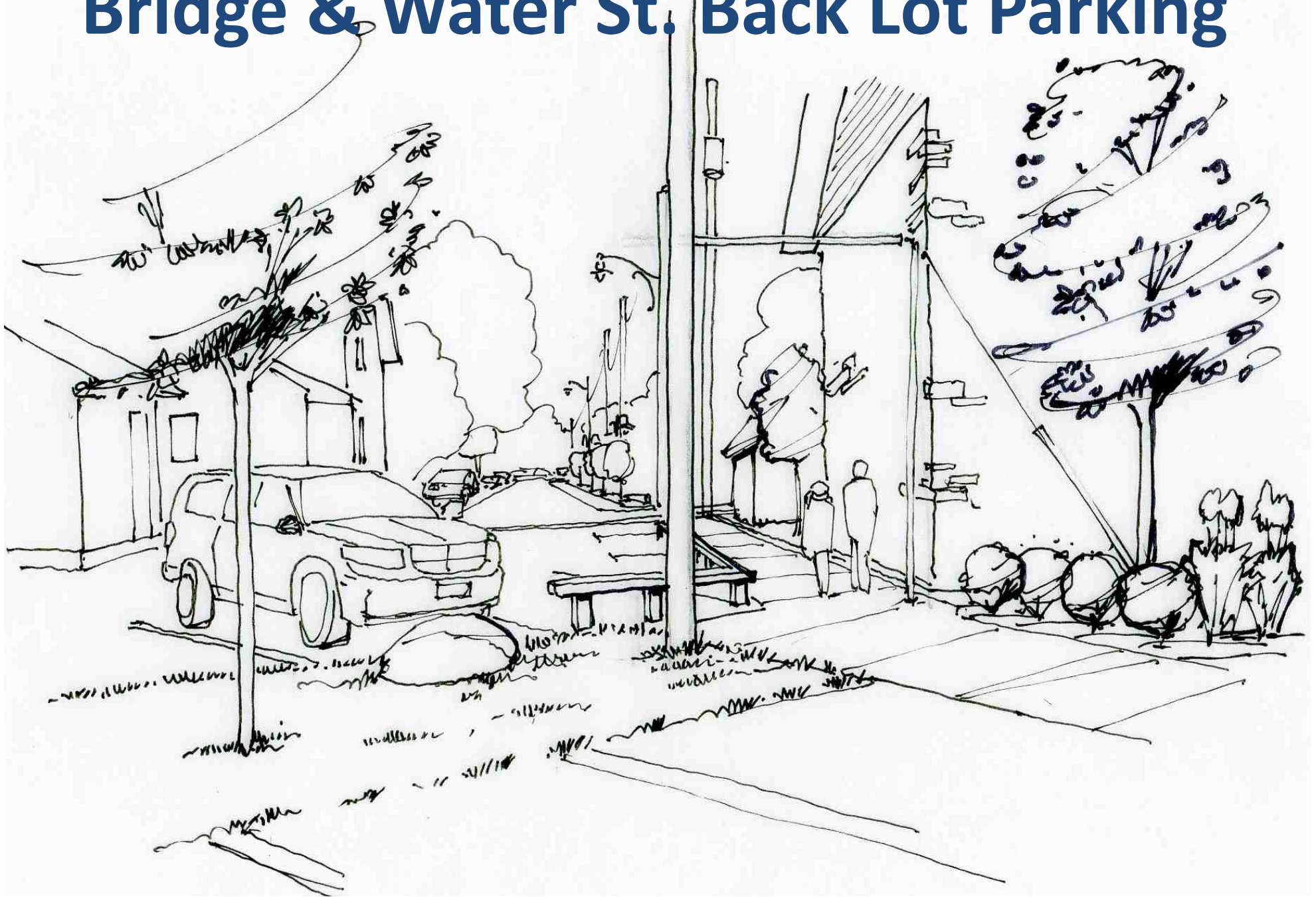




Bridge & Water St. Back Lot Parking



Bridge & Water St. Back Lot Parking



Thank you!

Next steps

- Further Design Development Based on Input from this Meeting
- Community Open House (Feb. 26, 2015 tentative)
- Refine and Advance Designs
- Presentation to Council