

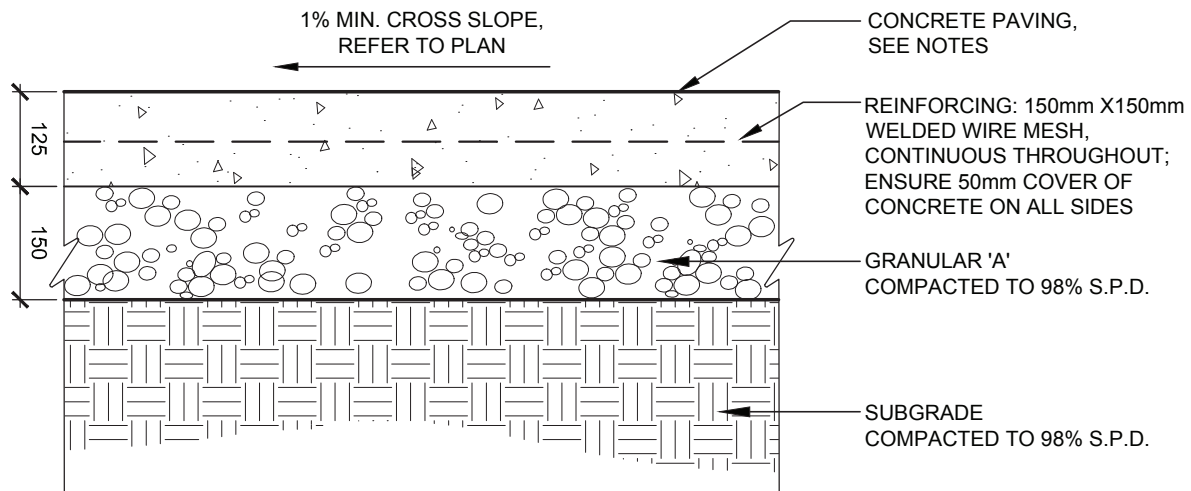
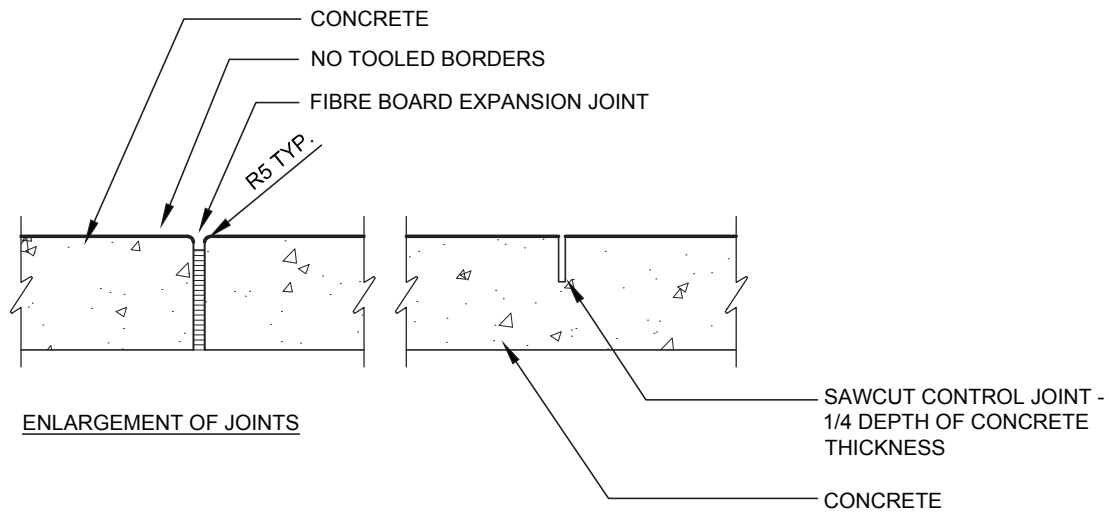


Community Improvement Plan Standard Details

Bridgenorth
Ennismore
Lakefield
Young's Point

Table of Contents

SD-101 Standard Duty Concrete Paving	1
SD-102 Concrete Shoulder Paving	2
SD-103 Concrete Curb Wall / Planter	3
SD-104 Unit Paving on Concrete Base	4
SD-105 Light Duty Permeable Pavers	5
SD-201 Bicycle Rack	6
SD-202 Bench	7
SD-203 Trash and Recycling Container	8
SD-204 Railing	9
SD-205 Young's Point Bollard	10
SD-206 Bridgenorth Bollard	11
SD-301 Bridgenorth Roadway Lighting	12
SD-302 Bridgenorth Pedestrian Lighting	13
SD-303 Ennismore Roadway Lighting	14
SD-304 Ennismore Pedestrian Lighting	15
SD-305 Lakefield Roadway Lighting	16
SD-306 Lakefield Pedestrian Lighting	17
SD-307 Young's Point Roadway Lighting	18
SD-308 Young's Point Pedestrian Lighting	19
SD-401 Township Sign Tree	20
SD-402 Hamlet or Historic Village Sign	21
SD-501 Deciduous Tree Planting	22
SD-502 Coniferous Tree Planting	23
SD-503 Continuous Shrub Planting Bed	24
SD-504 Multi-Stemmed Tree Guying	25
SD-505 Tree Preservation Protection Fence	26
SD-506 Tree Planting in Hard Landscape	27
SD-507 Infiltration Planter	28



NOTES:

1. ALL DIMENSIONS IN MILLIMETRES, UNLESS STATED OTHERWISE.
2. REFER TO DETAIL SD-301 FOR TYPICAL WALKWAY WIDTHS AND CLEARANCES.
3. CONCRETE MIX TO BE 30 MPa AT 28 DAYS.
4. GRANULAR BASE TO EXTEND MIN. 150mm BEYOND PAVED EDGE.
5. LIGHT BROOM FINISH.
6. PROVIDE CLEAN STRAIGHT ASPHALT IMPREGNATED FIBRE BOARD EXPANSION JOINT BETWEEN NEW CONCRETE PAVING AND EXISTING STRUCTURES. NO MARGINS AND LIGHTLY TOOLED EDGES ONLY.
7. EXPANSION JOINTS AT MAX. 6.0m INTERVALS
8. CONTROL JOINTS AT MAX. 3.0m INTERVALS.

DWG. TITLE

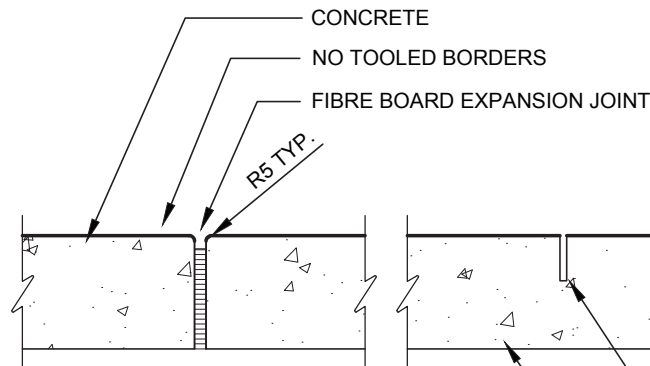
STANDARD DUTY CONCRETE PAVING



DATE FEBRUARY 2015
SCALE N.T.S.
REVISION No.

COMMUNITY IMPROVEMENT PLAN **STANDARD DETAIL**

SD-101



ENLARGEMENT OF JOINTS

SAWCUT CONTROL JOINT -
1/4 DEPTH OF CONCRETE
THICKNESS

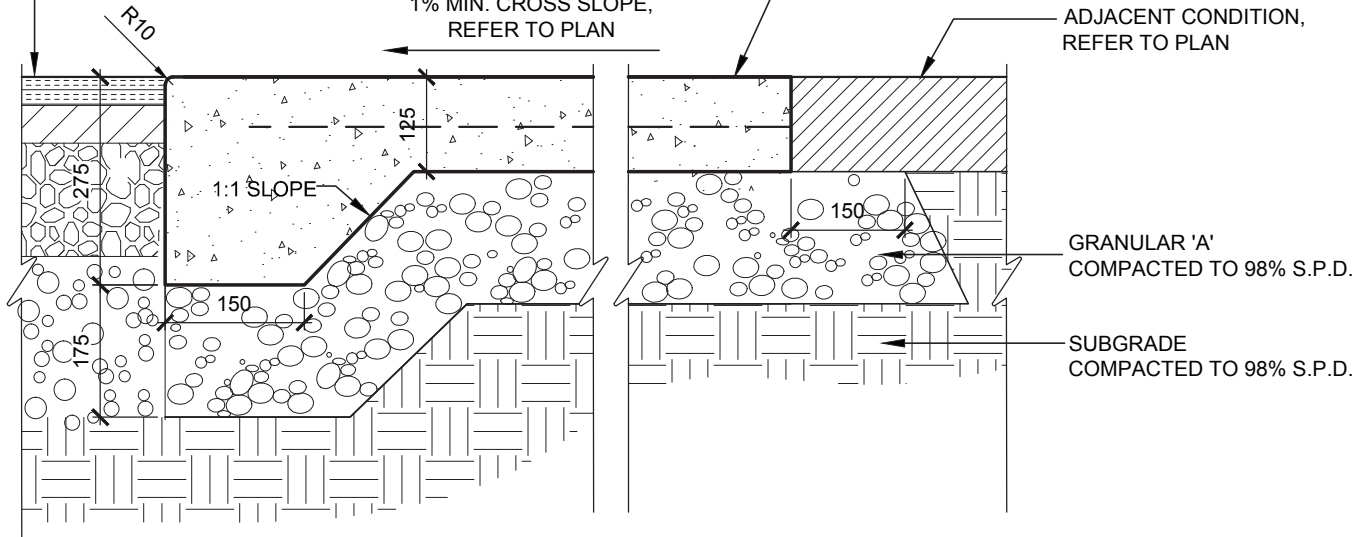
CONCRETE

ADJACENT FINISHED ROAD
SURFACE; REPAIR AS PER
TOWNSHIP OF SELWYN
STANDARDS

1% MIN. CROSS SLOPE,
REFER TO PLAN

CONCRETE PAVING,
SEE NOTES

ADJACENT CONDITION,
REFER TO PLAN



GRANULAR 'A'
COMPACTED TO 98% S.P.D.

SUBGRADE
COMPACTED TO 98% S.P.D.

NOTES:

1. ALL DIMENSIONS IN MILLIMETRES, UNLESS STATED OTHERWISE.
2. CONCRETE MIX TO BE 30 MPa AT 28 DAYS.
3. GRANULAR BASE TO EXTEND MIN. 150mm BEYOND PAVED EDGE.
4. LIGHT BROOM FINISH. PERPENDICULAR TO SURFACE DRAINAGE.
5. PROVIDE CLEAN STRAIGHT ASPHALT IMPREGNATED FIBRE BOARD EXPANSION JOINT BETWEEN NEW CONCRETE PAVING AND EXISTING STRUCTURES. NO MARGINS AND LIGHTLY TOOLED EDGES ONLY.
6. EXPANSION JOINTS AT MAX. 6.0m INTERVALS
7. CONTROL JOINTS AT MAX. 3.0m INTERVALS.

DWG. TITLE

CONCRETE SHOULDER PAVING



COMMUNITY IMPROVEMENT PLAN STANDARD DETAIL

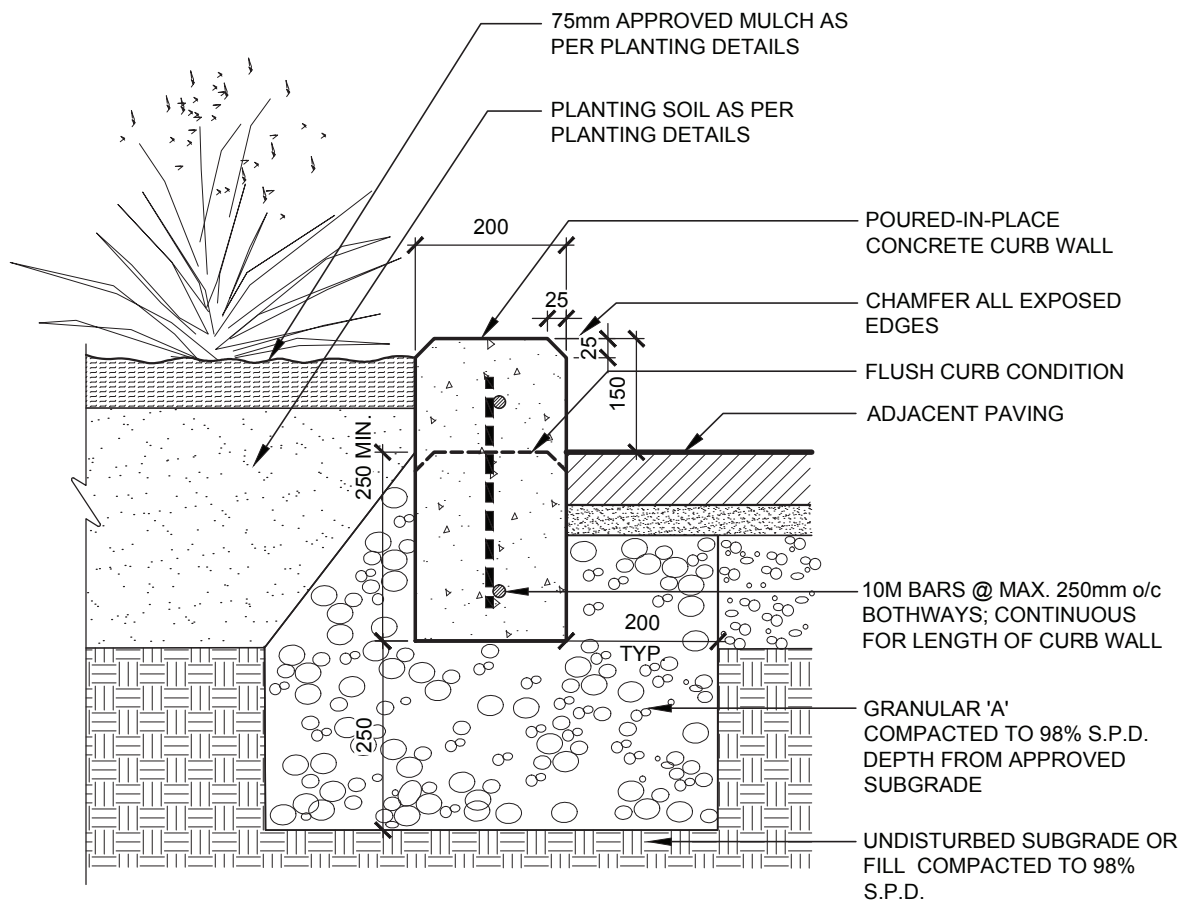
DATE FEBRUARY 2015

SCALE N.T.S.

REVISION No.

DWG. No.

SD-102



NOTES:

1. ALL DIMENSIONS IN MILLIMETRES, UNLESS STATED OTHERWISE.
2. CONCRETE MIX TO BE 30 MPa AT 28 DAYS.
3. GRANULAR BASE TO EXTEND MIN. 150mm BEYOND PAVED EDGE.
4. EXPANSION JOINTS AT MAX. 6000mm INTERVALS.
5. CURB SHALL BE FORMED WITH WOOD OR STEEL.

DWG. TITLE

CONCRETE CURB WALL / PLANTER

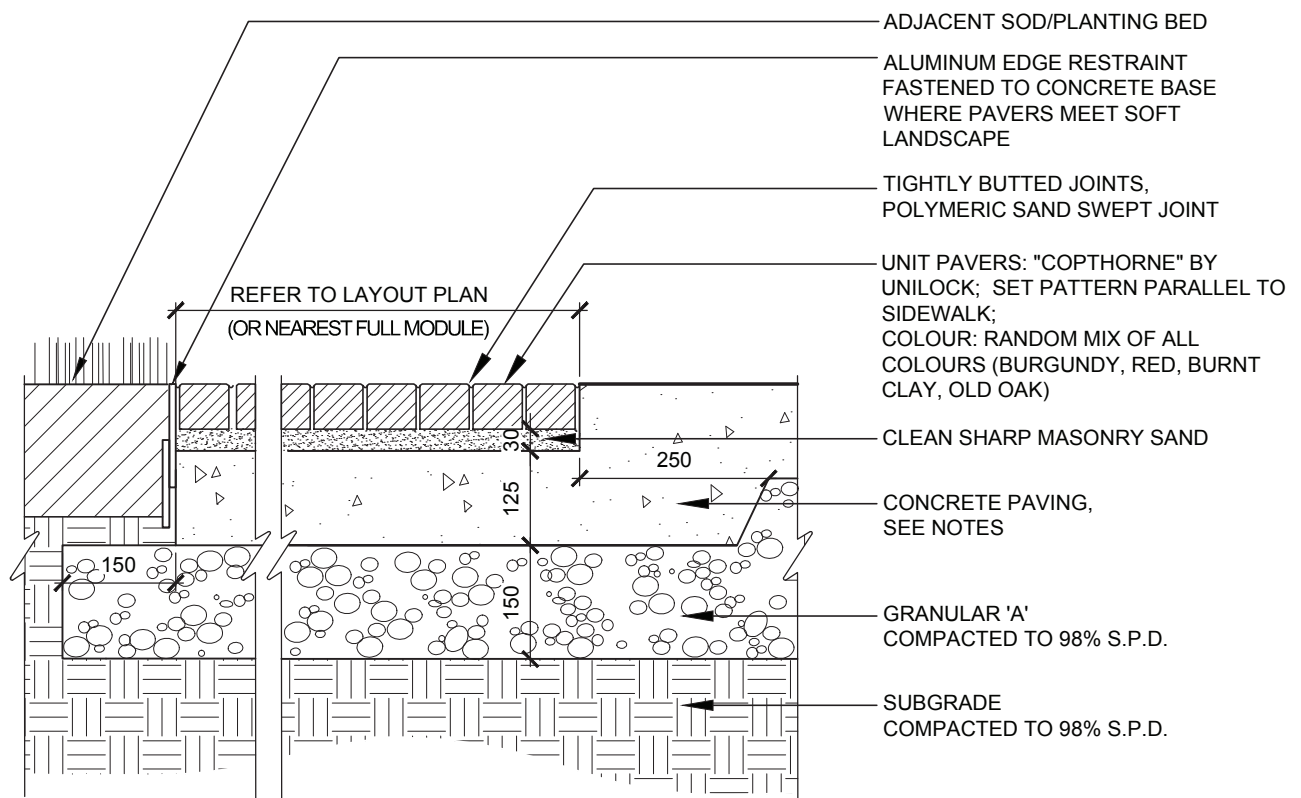


COMMUNITY IMPROVEMENT PLAN **STANDARD DETAIL**

DATE FEBRUARY 2015
SCALE N.T.S.
REVISION No.

DWG. No.

SD-103



NOTES:

1. ALL DIMENSIONS IN MILLIMETRES, UNLESS STATED OTHERWISE.
2. GRANULAR BASE TO EXTEND MIN. 150mm BEYOND PAVED EDGE.

DWG. TITLE

UNIT PAVING ON CONCRETE BASE



COMMUNITY IMPROVEMENT PLAN STANDARD DETAIL

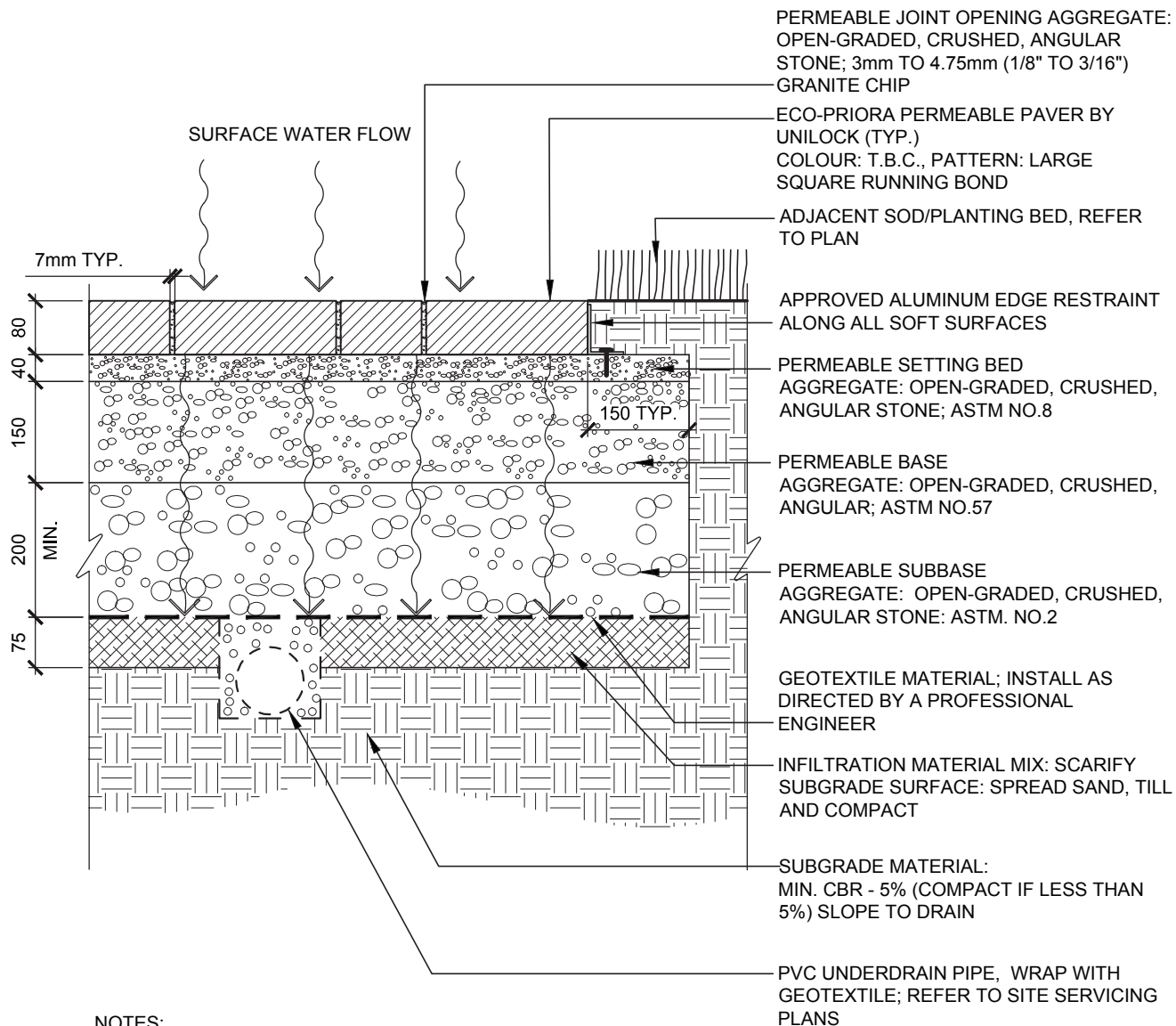
DATE
FEBRUARY 2015

SCALE
N.T.S.

REVISION No.

DWG. No.

SD-104



NOTES:

1. DETAIL TO BE REVIEWED BY ENGINEER TO CONFIRM LOAD BEARING REQUIREMENTS HAVE BEEN MET AND TO CONFIRM PERCOLATION OF SUBSOIL.

DWG. TITLE

LIGHT DUTY PERMEABLE PAVERS

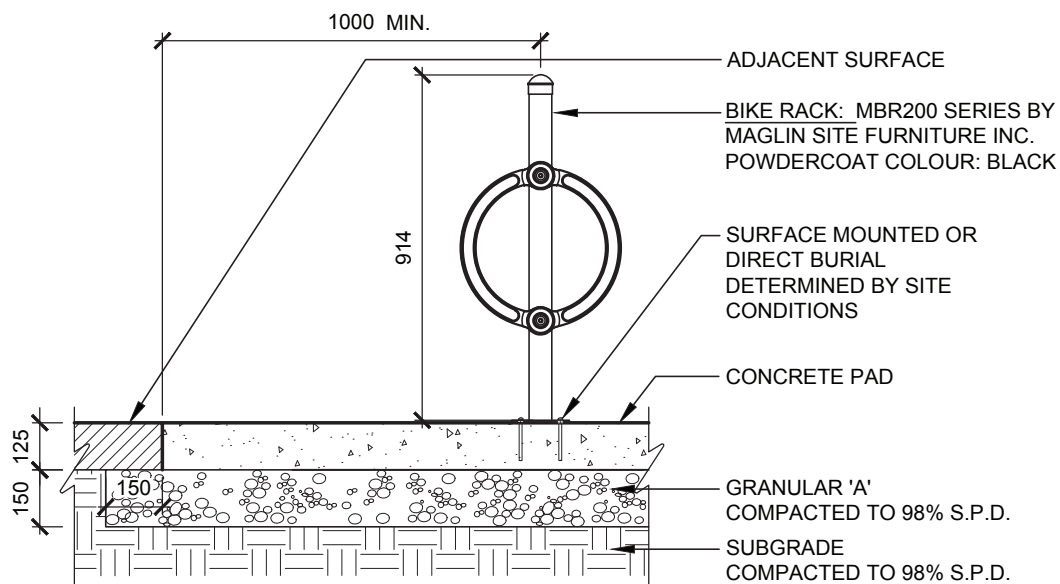
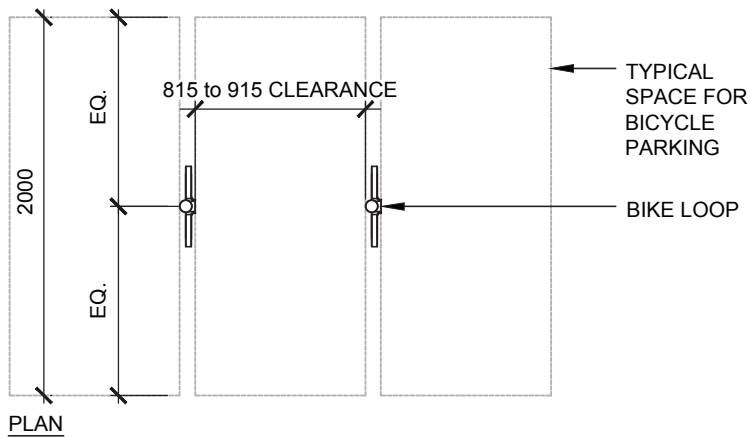


COMMUNITY IMPROVEMENT PLAN **STANDARD DETAIL**

DATE FEBRUARY 2015
SCALE N.T.S.
REVISION No.

DWG. No.

SD-105



NOTES:

1. ALL DIMENSIONS SHOWN IN MILLIMETRES, UNLESS STATED OTHERWISE.
2. CONCRETE MIX TO BE 30 MPa AT 28 DAYS.
3. ALL FASTENING HARDWARE TO BE STAINLESS STEEL.
4. INSTALLED AS PER MANUFACTURER'S SPECIFICATIONS.

DWG. TITLE

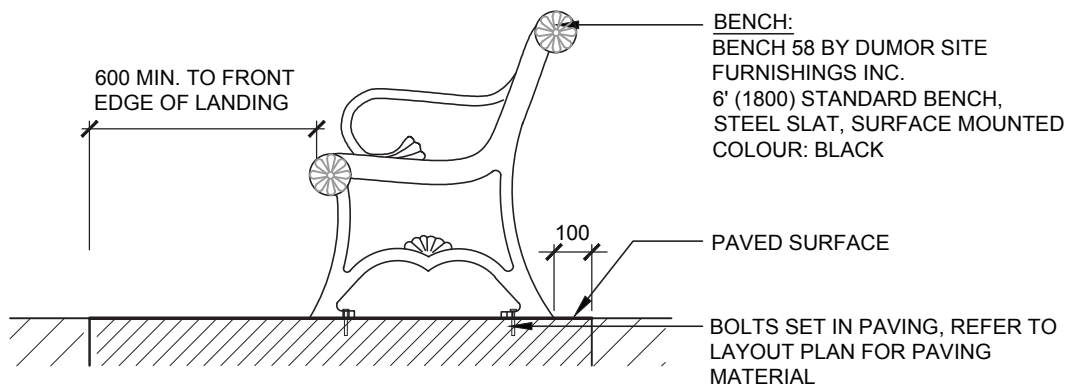
BICYCLE RACK



DATE FEBRUARY 2015
SCALE N.T.S.
REVISION No.

COMMUNITY IMPROVEMENT PLAN STANDARD DETAIL

SD-201



SECTION

NOTES:

1. ALL DIMENSIONS IN MILLIMETRES, UNLESS STATED OTHERWISE.
2. ALL FASTENERS TO BE STAINLESS STEEL.
3. INSTALL AS PER MANUFACTURER'S SPECIFICATIONS.

DWG. TITLE

BENCH

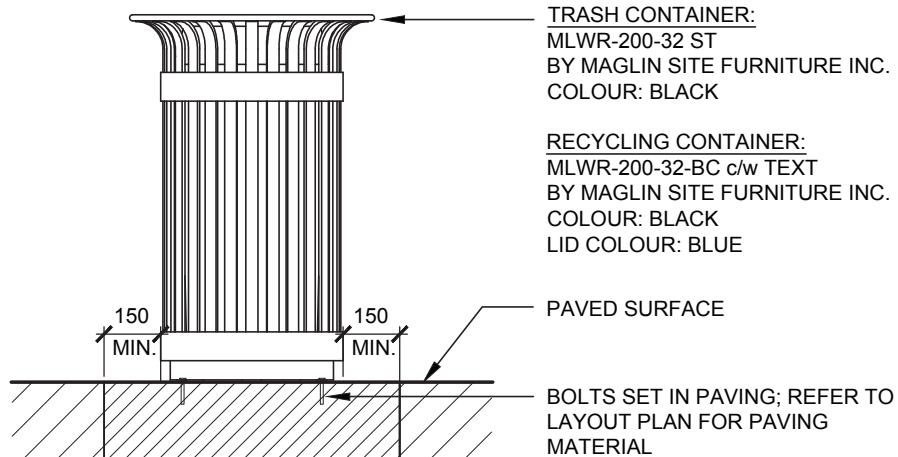


DATE FEBRUARY 2015
SCALE N.T.S.
REVISION No.

COMMUNITY IMPROVEMENT PLAN
STANDARD DETAIL

DWG. No.

SD-202



SECTION

NOTES:

1. ALL DIMENSIONS IN MILLIMETRES, UNLESS STATED OTHERWISE.
2. ALL FASTENERS TO BE STAINLESS STEEL.
3. INSTALL AS PER MANUFACTURER'S SPECIFICATIONS.

DWG. TITLE

TRASH AND RECYCLING CONTAINER

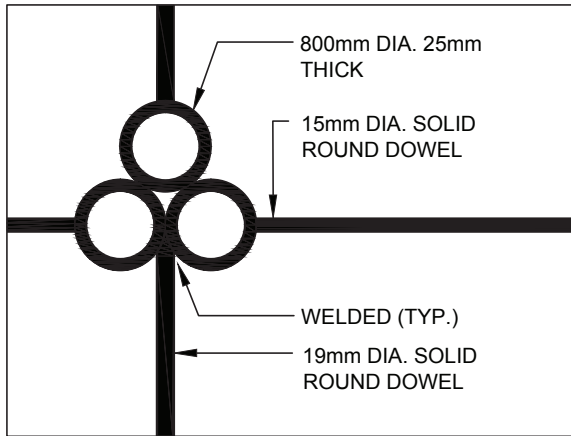
Township of
Selwyn

STANDARD DETAIL

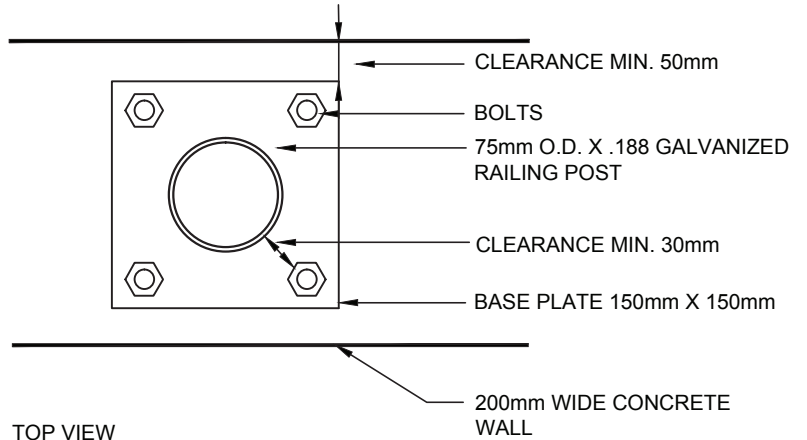
DATE FEBRUARY 2015
SCALE N.T.S.
REVISION No.

DWG. No.

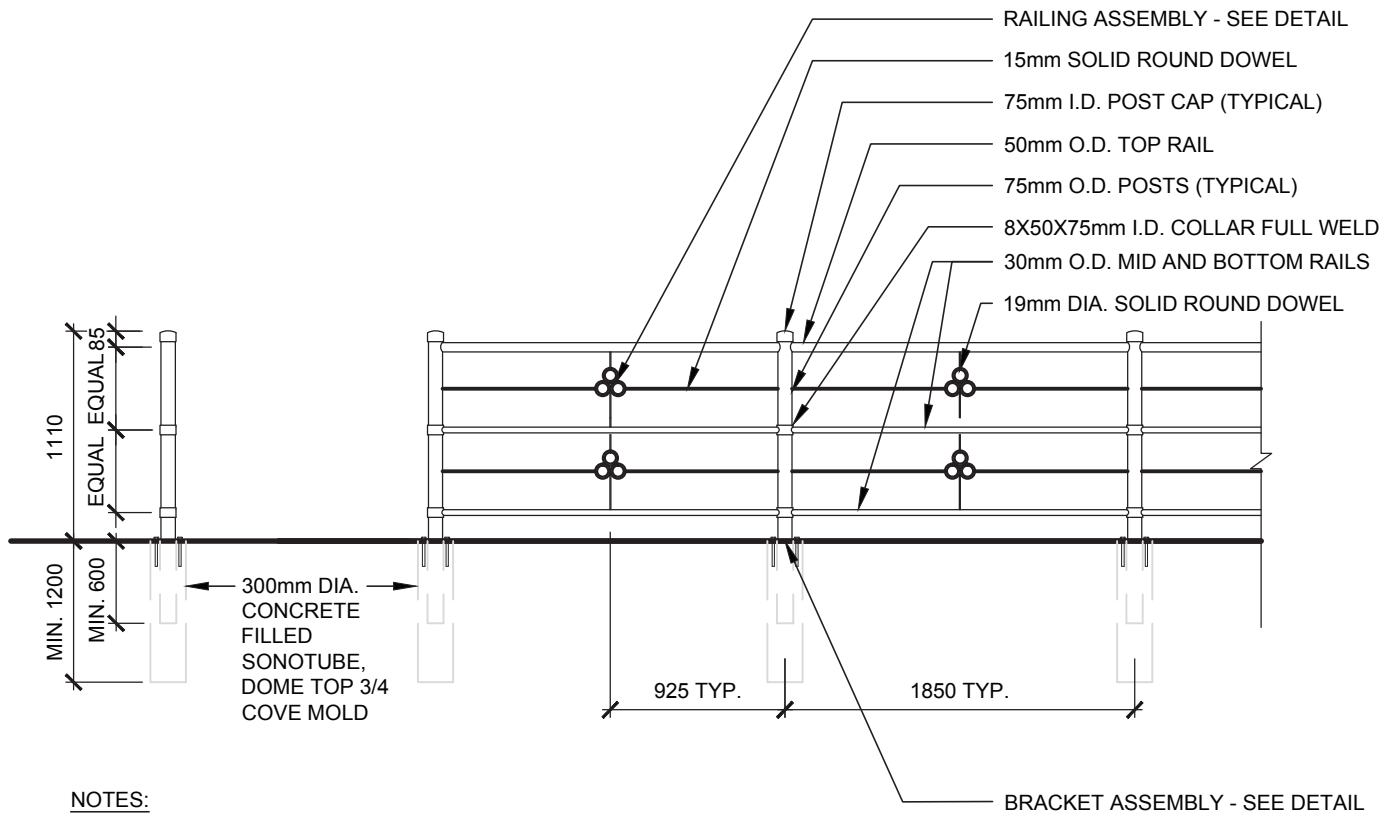
SD-203



RAIL DETAIL



TOP VIEW



NOTES:

1. PROVIDE SHOP DRAWINGS TO LANDSCAPE ARCHITECT FOR APPROVAL PRIOR TO ASSEMBLY.
2. SHOP PRIME & PAINT PRIOR TO INSTALLATION FINISH ON ALL RAILING COMPONENTS. AFTER FABRICATION PRIME ALL FIELD WELDS AND PROVIDE SECOND FINISH COAT. ALL PAINT TO BE GLOSS ENAMEL.

DWG. TITLE

RAILING

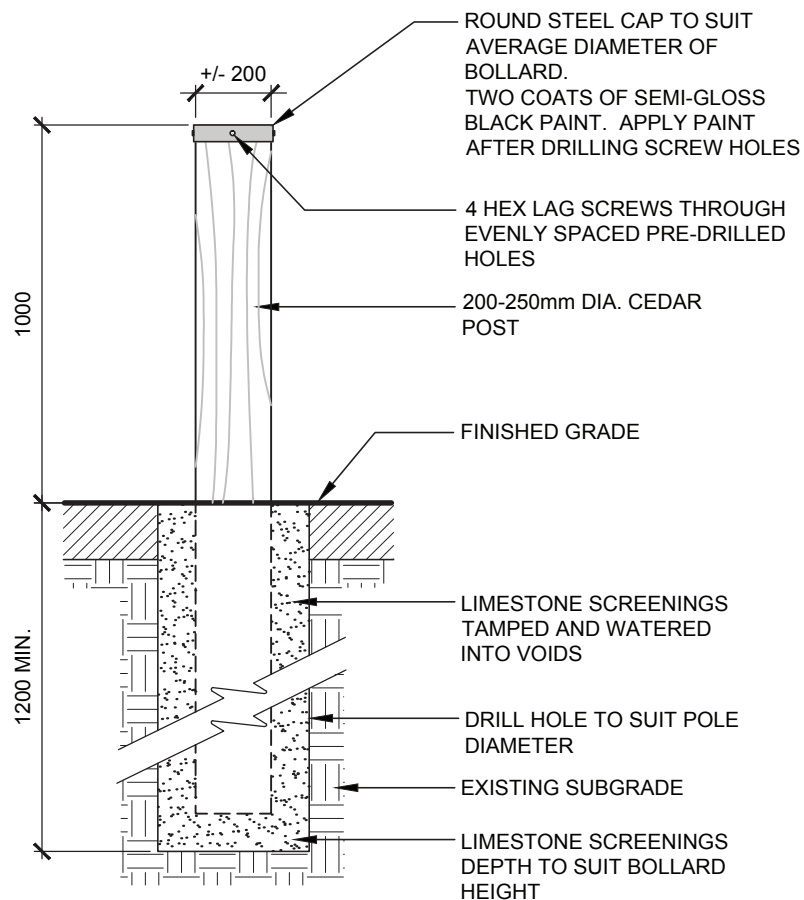


COMMUNITY IMPROVEMENT PLAN STANDARD DETAIL

DATE FEBRUARY 2015
SCALE N.T.S.
REVISION No.

DWG. No.

SD-204



NOTES:
1. ALL DIMENSIONS IN MILLIMETRES, UNLESS STATED OTHERWISE.

DWG. TITLE

YOUNG'S POINT BOLLARD



COMMUNITY IMPROVEMENT PLAN
STANDARD DETAIL

DATE FEBRUARY 2015
SCALE N.T.S.
REVISION No.

DWG. No.

SD-205

REV.	ALTERATION	DATE	BY
A	BOLLARD WAS LIT (KLA22)	01/28/15	T.B

SPECIFICATIONS:

CATALOGUE NO.: KNA22

QUANTITY:

PAINT: TEXTURED BLACK

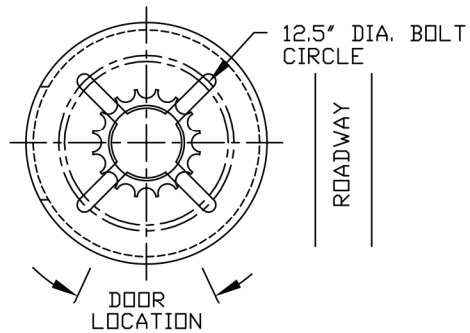
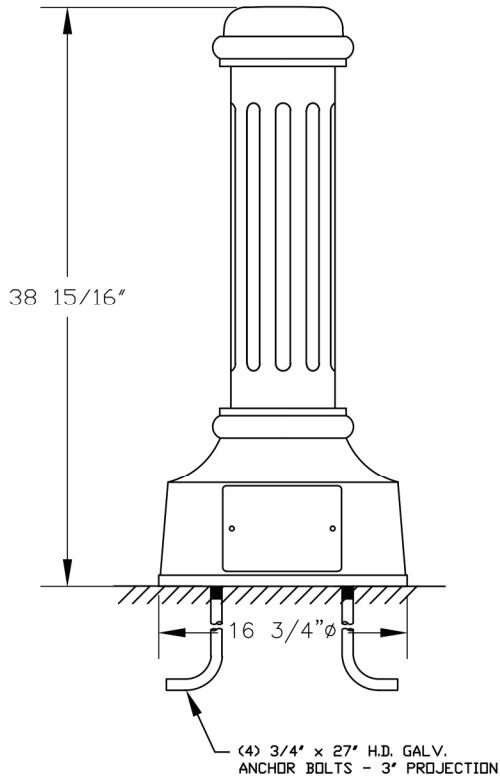
MATERIAL: ALUMINUM

APPROX. WGT.: 50 lbs.

BOLT CIRCLE: 12 1/2" Ø



ANCHOR BOLTS: 3/4" x 27" LONG (INCLUDED)

OPTIONS: -



CUSTOMER APPROVAL & DATE:

CUSTOMER ORDER No:
-
STRESSCRETE ORDER No:
-
KMFG. ORDER No:
-
KING U.S. ORDER No:
-

 		Manufacturing Locations: Burlington, Ontario 1-800-268-7809 Northport, Alabama 1-800-435-6563 Atchison, Kansas 1-800-837-1024 Jefferson, Ohio 1-800-268-7809	
King Luminaire • StressCrete • Est. 1953 STRESSCRETE GROUP			
PROJECT/CUSTOMER: TOWNSHIP OF SELWYN, ON BRIDGENORTH (BOLLARD)			
DRAWN BY:	AT:	CHECKED BY:	DATE:
A. ALVELA	SC1		08/27/14
DRAWING TYPE:		DRAWING NUMBER:	
CONCEPT DWG.		206A8203-8	

DWG. TITLE

BRIDGENORTH BOLLARD



COMMUNITY IMPROVEMENT PLAN STANDARD DETAIL

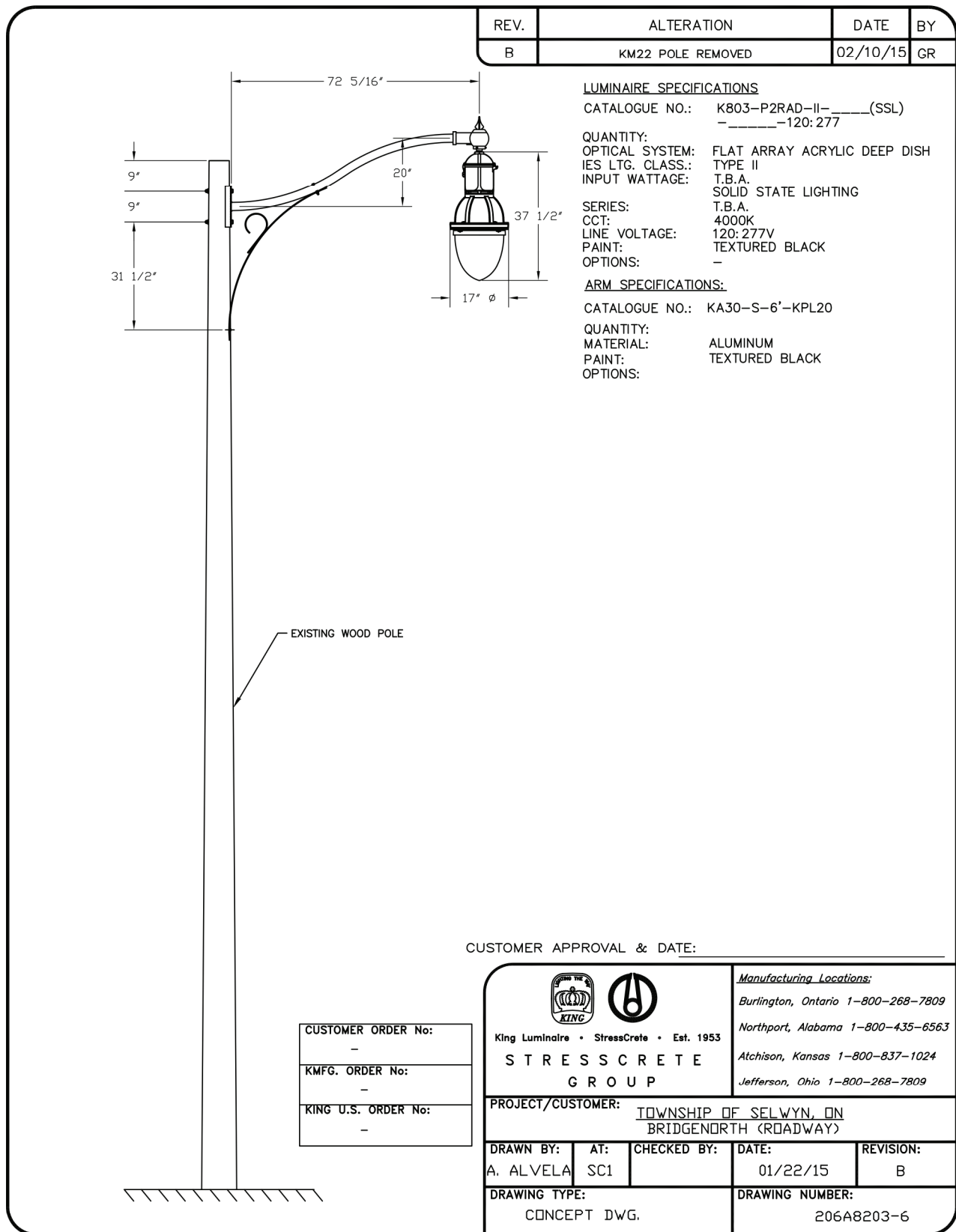
DATE FEBRUARY 2015

SCALE N.T.S.

REVISION No.

DWG. No.

SD-206



DWG. TITLE

BRIDGENORTH ROADWAY LIGHTING



DATE: FEBRUARY 2015

SCALE: N.T.S.

REVISION No. _____

COMMUNITY IMPROVEMENT PLAN STANDARD DETAIL

DWG. No.

SD-301

REV.	ALTERATION	DATE	BY

LUMINAIRE SPECIFICATIONS

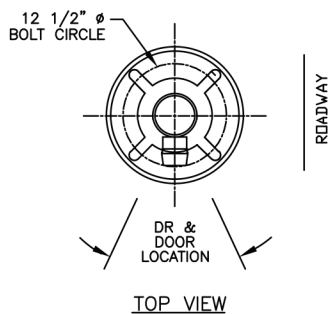
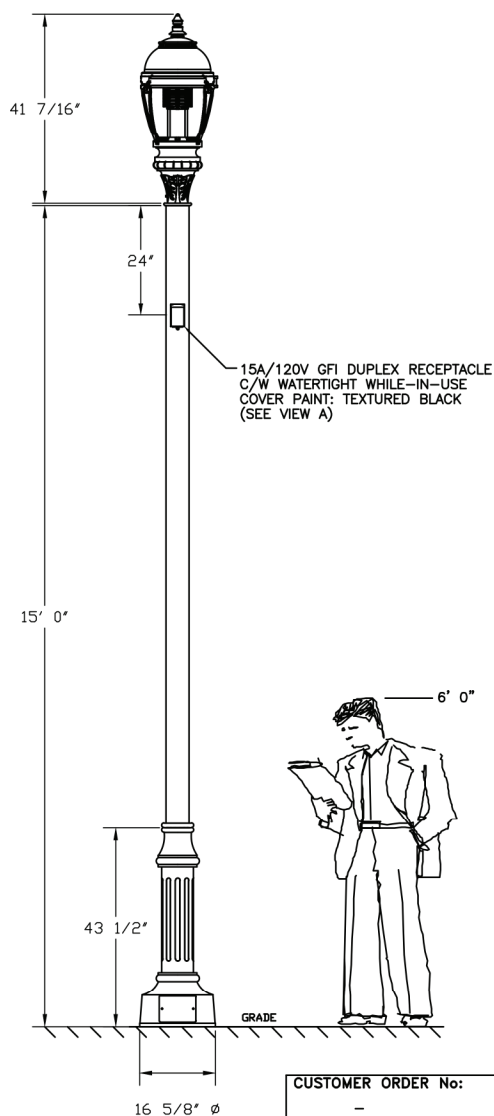
CATALOGUE NO.: K134R-B2AR-III-____(SSL)
 -____-120:277-K13

QUANTITY: _____
 GLOBE MOUNTING: ROTOLOCK
 OPTICAL SYSTEM: BAFFLED ARRAY ACRYLIC RIPPLED
 IES CLASS.: TYPE III
 INPUT WATTAGE: _____W
 SOLID STATE LIGHTING

SERIES: _____
 LINE VOLTAGE: 120:277V
 POLE ADAPTOR: K13
 CCT: 4000K
 POWDERCOAT: TEXTURED BLACK
 OPTIONS: #7 VENTED FINIAL

POLE SPECIFICATIONS



CATALOGUE NO.: KM22RE-15'-DR
 QUANTITY: _____
 MATERIAL: ROUND EXTRUDED ALUM. SHAFT
 CAST ALUM. BASE
 TEXTURED BLACK
 PAINT: _____
 SHAFT DIAMETER: 5" O.D.
 OVERALL HEIGHT: 15' 0"
 APPROX. WEIGHT: T.B.A.
 ANCHOR BOLTS: (4) 3/4" x 27" LG.
 BOLT CIRCLE: 12 1/2" Ø
 OPTIONS: DUPLEX RECEPTACLE



CUSTOMER APPROVAL & DATE: _____

CUSTOMER ORDER No: _____
 KMFG. ORDER No: _____
 KING U.S. ORDER No: _____

Notes:
 Although rare, oscillating loads severe enough to cause damage can occasionally occur in structures of all types. Because they are influenced by many factors not provided to StressCrete, these loads are unpredictable. The users maintenance program should include observation for excessive vibration & examination for any structural damage. The StressCrete warranty specifically excludes fatigue failure or similar phenomena resulting from induced vibration, oscillation or resonance associated with the eccentric rotation of attached equipment.

 		Manufacturing Locations: Burlington, Ontario 1-800-268-7809 Northport, Alabama 1-800-435-6563 Atchison, Kansas 1-800-837-1024 Jefferson, Ohio 1-800-268-7809	
King Luminaire • StressCrete • Est. 1953 STRESSCRETE GROUP			
PROJECT/CUSTOMER: TOWNSHIP OF SELWYN, ON BRIDGENORTH (PEDESTRIAN)			
DRAWN BY:	AT:	CHECKED BY:	DATE:
A. ALVELA	SC1		01/22/15
DRAWING TYPE:		DRAWING NUMBER:	
CONCEPT DWG.		206A8203-7	

DWG. TITLE

BRIDGENORTH PEDESTRIAN LIGHTING

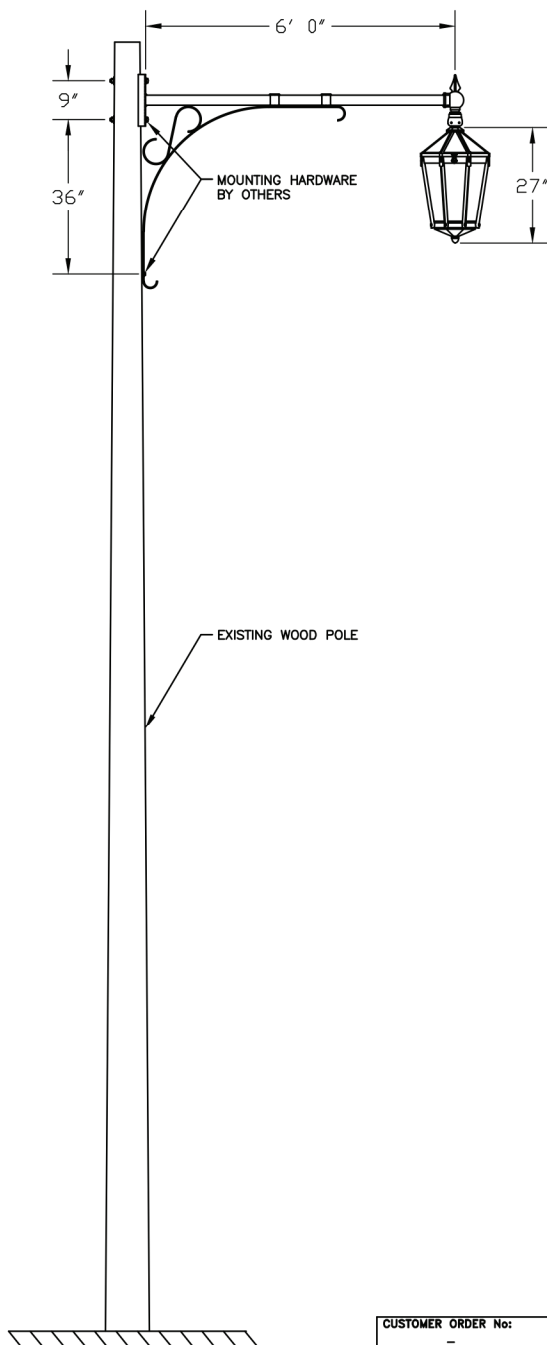


COMMUNITY IMPROVEMENT PLAN STANDARD DETAIL

DATE: FEBRUARY 2015
 SCALE: N.T.S.
 REVISION No. _____

DWG. No.

SD-302



REV.	ALTERATION	DATE	BY
A	KA10 ADDED & FIXTURE WAS TENON MOUNT	01/28/15	T.B

LUMINAIRE SPECIFICATIONS

CATALOGUE NO.: K56-C-P-P2AR-II-____(SSL)
-____-120:277

QUANTITY:
OPTICAL SYSTEM: FLAT ARRAY ACRYLIC RIPPLED
IES CLASS.: TYPE II
WATTAGE: ____W
SOLID STATE LIGHTING

SERIES:
LINE VOLTAGE: 120:277V
PAINT: TEXTURED BLACK
OPTIONS: -

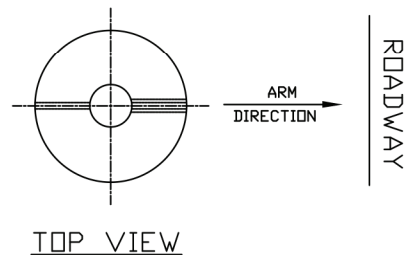
ARM SPECIFICATIONS

CATALOGUE NO.: KA10-S-6'

QUANTITY:
MATERIAL: ALUMINUM
PAINT: TEXTURED BLACK
OPTIONS: -

POLE SPECIFICATIONS



CATALOGUE NO.: EXISTING WOOD POLE



TOP VIEW

CUSTOMER APPROVAL & DATE: _____

CUSTOMER ORDER No:	-
SC1 ORDER No:	-
KMFG. ORDER No:	-
KING U.S. ORDER No:	-

 		Manufacturing Locations: Burlington, Ontario 1-800-268-7809 Northport, Alabama 1-800-435-6563 Atchison, Kansas 1-800-837-1024 Jefferson, Ohio 1-800-268-7809	
King Luminaire • StressCrete • Est. 1953 STRESSCRETE GROUP			
PROJECT/CUSTOMER: TOWNSHIP OF SELWYN, ON ENNISMORE (ROADWAY)			
DRAWN BY:	AT:	CHECKED BY:	DATE:
A. ALVELA	SC1		01/22/15
DRAWING TYPE:		DRAWING NUMBER:	
CONCEPT DWG.		206A8203-9	
REVISION:			
		A	

DWG. TITLE

ENNISMORE ROADWAY LIGHTING



COMMUNITY IMPROVEMENT PLAN STANDARD DETAIL

DATE	FEBRUARY 2015	DWG. No.
SCALE	N.T.S.	
REVISION No.		

SD-303

REV.	ALTERATION	DATE	BY
B	FLOWER POT HOLDERS REMOVED	02/10/15	GR

LUMINAIRE SPECIFICATIONS

CATALOGUE NO.: K56-C-K16-P2AR-____-____(SSL)
 _____-120:277

QUANTITY:
 OPTICAL SYSTEM: FLAT ARRAY ACRYLIC RIPPLED
 IES CLASS.: _____
 WATTAGE: _____W
 SOLID STATE LIGHTING

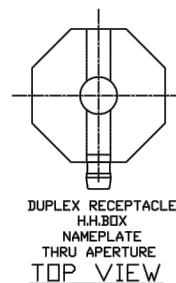
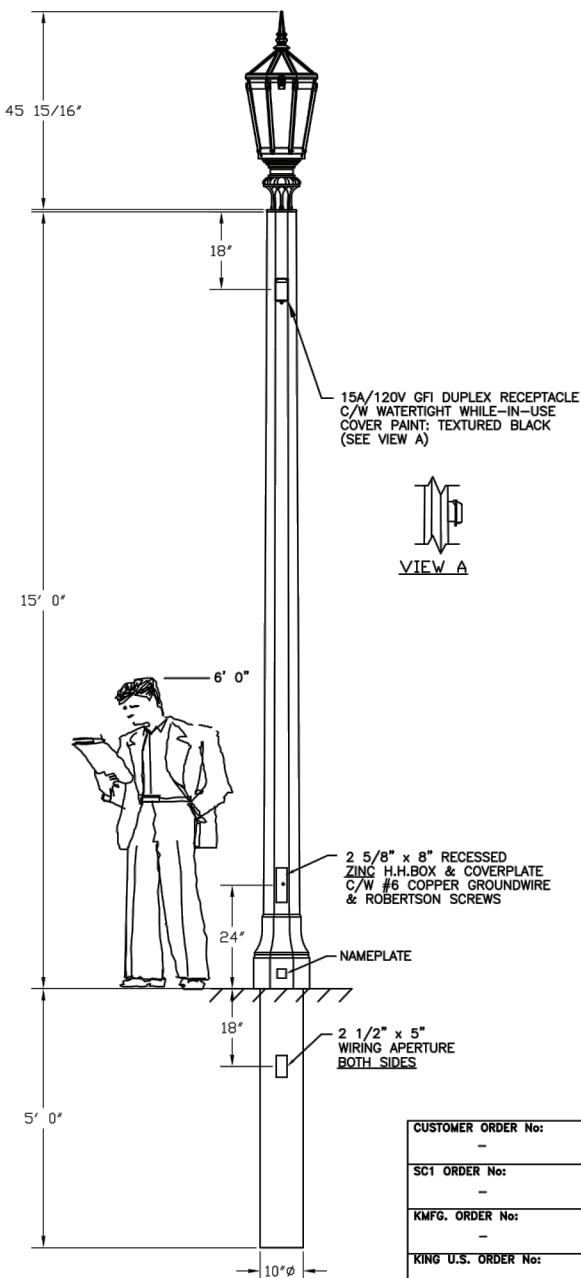
SERIES:
 LINE VOLTAGE: 120:277V
 POLE ADAPTOR: K16
 PAINT: TEXTURED BLACK
 OPTIONS: -

POLE SPECIFICATIONS

CATALOGUE NO.: KCT1-15-G-E11 C/W
 140-35/35 & DR

QUANTITY:
 SECTION: OCTAGONAL
 COLOUR: ECLIPSE
 FINISH: ETCHED
 POLE TOP: 6 3/4" FL/FL
 POLE BUTT: 10" Ø
 POLE LENGTH: 20' 0"
 APPROX. WGT.: 1,150 lbs.
 MIN RACEWAY: 1 1/8"

COATINGS REQUIRED:
 -2 COATS (JB) ACRYLIC
 FULL LENGTH



ROADWAY

CUSTOMER APPROVAL & DATE: _____



King Luminaire • StressCrete • Est. 1953

STRESSCRETE GROUP

Manufacturing Locations:

Burlington, Ontario 1-800-268-7809

Northport, Alabama 1-800-435-6563

Atchison, Kansas 1-800-837-1024

Jefferson, Ohio 1-800-268-7809

PROJECT/CUSTOMER: TOWNSHIP OF SELWYN, ON
 ENNISMORE (PEDESTRIAN)

DRAWN BY:	AT:	CHECKED BY:	DATE:	REVISION:
A. ALVELA	SC1		01/22/15	B

DRAWING TYPE:	DRAWING NUMBER:
CONCEPT DWG.	206A8203-10

Notes:
 StressCrete makes no claims that the reference embedment depth shown is suitable for supporting this structure. It is recommended that a competent professional evaluate the soils present on site, confirming required embedment depth, hole diameter and backfill material to be used.

CUSTOMER ORDER No:	-
SC1 ORDER No:	-
KMFG. ORDER No:	-
KING U.S. ORDER No:	-

DWG. TITLE

ENNISMORE PEDESTRIAN LIGHTING

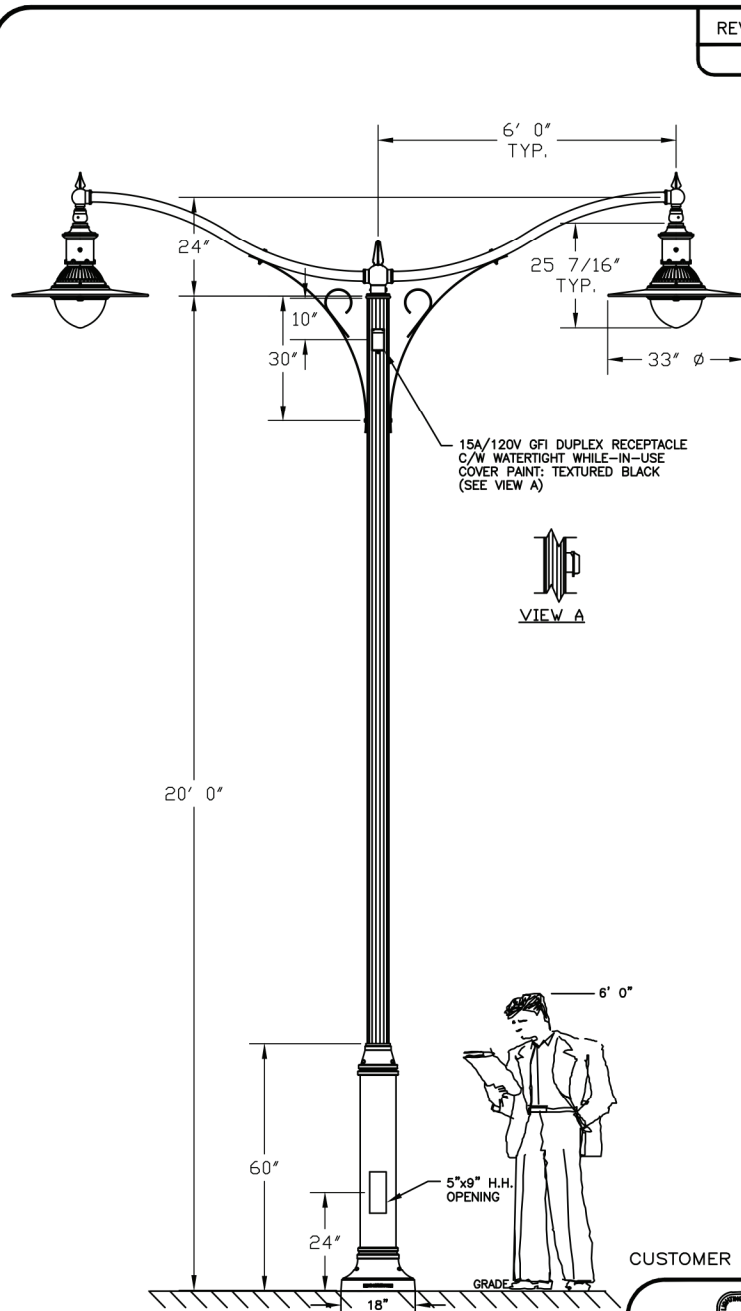


COMMUNITY IMPROVEMENT PLAN STANDARD DETAIL

DATE: FEBRUARY 2015
 SCALE: N.T.S.
 REVISION No.

DWG. No.

SD-304



REV.	ALTERATION	DATE	BY

LUMINAIRE SPECIFICATIONS

CATALOGUE NO.: K204-P2SH-II-75(SSL)
-7042-120:277-KPL10-PBC

QUANTITY: 1
OPTICAL SYSTEM: FLAT ARRAY, CLEAR SHALLOW GLASS LENS
IES CLASS.: TYPE II
WATTAGE: 75W
(SOLID STATE LIGHTING)
SERIES: 7042
LINE VOLTAGE: 120:277V
PAINT: TEXTURED BLACK
OPTIONS: KPL-20 LEVELING DEVICE
PHOTO BUTTON CELL

ARM SPECIFICATIONS

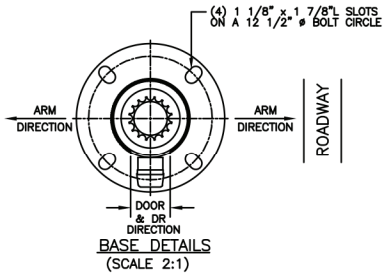
CATALOGUE NO.: KA30-T-2-6'

QUANTITY: 1
MATERIAL: ALUMINUM
PAINT: TEXTURED BLACK
OPTIONS: KPL-10 LEVELING DEVICE

POLE SPECIFICATIONS

CATALOGUE NO.: KSB83-FE-A-20'-DR

QUANTITY: 1
MATERIAL: ALUMINUM
POLE LENGTH: 20' 0"
PAINT: TEXTURED BLACK
ANCHOR BOLTS: (4) 3/4" x 27"
BOLT CIRCLE: 12 1/2" Ø
TOP SIZE: 5 1/4" 16-FLUTED EXTRUDED
OPTIONS: DUPLEX RECEPTACLE



CUSTOMER APPROVAL & DATE:

CUSTOMER ORDER No:	-
KMFG. ORDER No:	-
KING U.S. ORDER No:	-

 King Luminaire • StressCrete • Est. 1953 STRESSCRETE GROUP		Manufacturing Locations: Burlington, Ontario 1-800-268-7809 Northport, Alabama 1-800-435-6563 Atchison, Kansas 1-800-837-1024 Jefferson, Ohio 1-800-268-7809		
		PROJECT/CUSTOMER: TOWNSHIP OF SELWYN, ON LAKEFIELD (ROADWAY)		
DRAWN BY: A. ALVELA	AT: SC1	CHECKED BY: []	DATE: 01/19/15	REVISION: []
DRAWING TYPE: CONCEPT DWG.		DRAWING NUMBER: 206A8203-2		

Notes:
Although rare, oscillating loads severe enough to cause damage can occasionally occur in structures of all types. Because they are influenced by many factors not provided to StressCrete, these loads are unpredictable. The users maintenance program should include observation for excessive vibration & examination for any structural damage. The StressCrete warranty specifically excludes fatigue failure or similar phenomena resulting from induced vibration, oscillation or resonance associated with the eccentric rotation of attached equipment.

DWG. TITLE

LAKEDFIELD ROADWAY LIGHTING

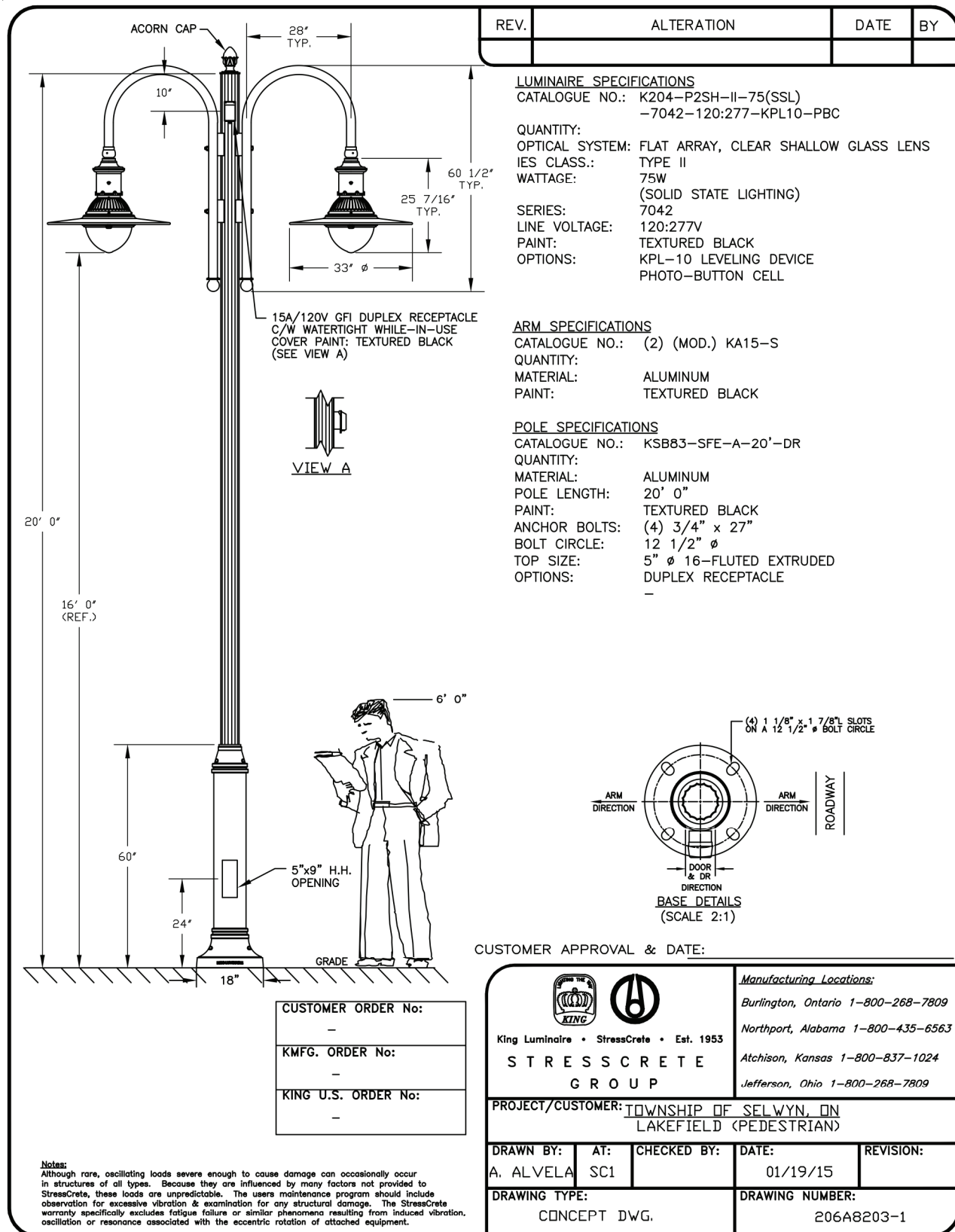


COMMUNITY IMPROVEMENT PLAN STANDARD DETAIL

DATE: FEBRUARY 2015
SCALE: N.T.S.
REVISION No.:

DWG. No.

SD-305



Notes:
Although rare, oscillating loads severe enough to cause damage can occasionally occur in structures of all types. Because they are influenced by many factors not provided to StressCrete, these loads are unpredictable. The users maintenance program should include observation for excessive vibration & examination for any structural damage. The StressCrete warranty specifically excludes fatigue failure or similar phenomena resulting from induced vibration, oscillation or resonance associated with the eccentric rotation of attached equipment.

DWG. TITLE

LAKEFIELD PEDESTRIAN LIGHTING



COMMUNITY IMPROVEMENT PLAN STANDARD DETAIL

DATE: FEBRUARY 2015

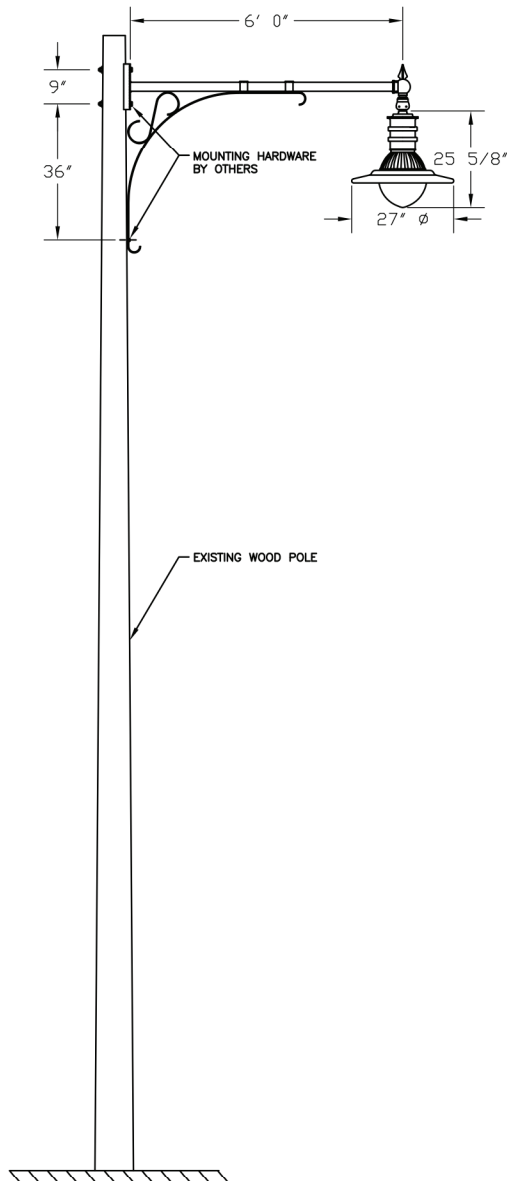
SCALE: N.T.S.

REVISION No.

DWG. No.

SD-306

REV.	ALTERATION	DATE	BY
B	FLAG HOLDER REMOVED	02/10/15	GR



LUMINAIRE SPECIFICATIONS

CATALOGUE NO.: (MOD)K206-P2SH-II-____(SSL)
 -____-120:277-KPL10

QUANTITY:
 OPTICAL SYSTEM: FLAT ARRAY, SHALLOW GLASS LENS
 IES CLASS.: TYPE II
 WATTAGE: ____W
 SOLID STATE LIGHTING

SERIES:
 LINE VOLTAGE: 120:277V
 PAINT: TEXTURED BLACK
 OPTIONS: KPL-10 LEVELING DEVICE

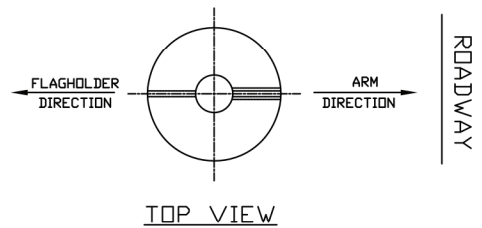
ARM SPECIFICATIONS

CATALOGUE NO.: KA10-S-6'

QUANTITY:
 MATERIAL: ALUMINUM
 PAINT: TEXTURED BLACK
 OPTIONS:

POLE SPECIFICATIONS

CATALOGUE NO.: EXISTING WOOD POLE





CUSTOMER APPROVAL & DATE: _____

CUSTOMER ORDER No:	-
SC1 ORDER No:	-
KMFG. ORDER No:	-
KING U.S. ORDER No:	-

Notes:

StressCrete makes no claims that the reference embedment depth shown is suitable for supporting this structure. It is recommended that a competent professional evaluate the soils present on site, confirming required embedment depth, hole diameter and backfill material to be used.

 		Manufacturing Locations: Burlington, Ontario 1-800-268-7809 Northport, Alabama 1-800-435-6563 Atchison, Kansas 1-800-837-1024 Jefferson, Ohio 1-800-268-7809	
King Luminaire • StressCrete • Est. 1953 STRESSCRETE GROUP			
PROJECT/CUSTOMER: TOWNSHIP OF SELWYN, ON YOUNG'S POINT (ROADWAY)			
DRAWN BY:	AT:	CHECKED BY:	DATE:
A. ALVELA	SC1		01/19/15
DRAWING TYPE:		DRAWING NUMBER:	
CONCEPT DWG.		206A8203-3	
REVISION:		B	

DWG. TITLE

YOUNG'S POINT ROADWAY LIGHTING



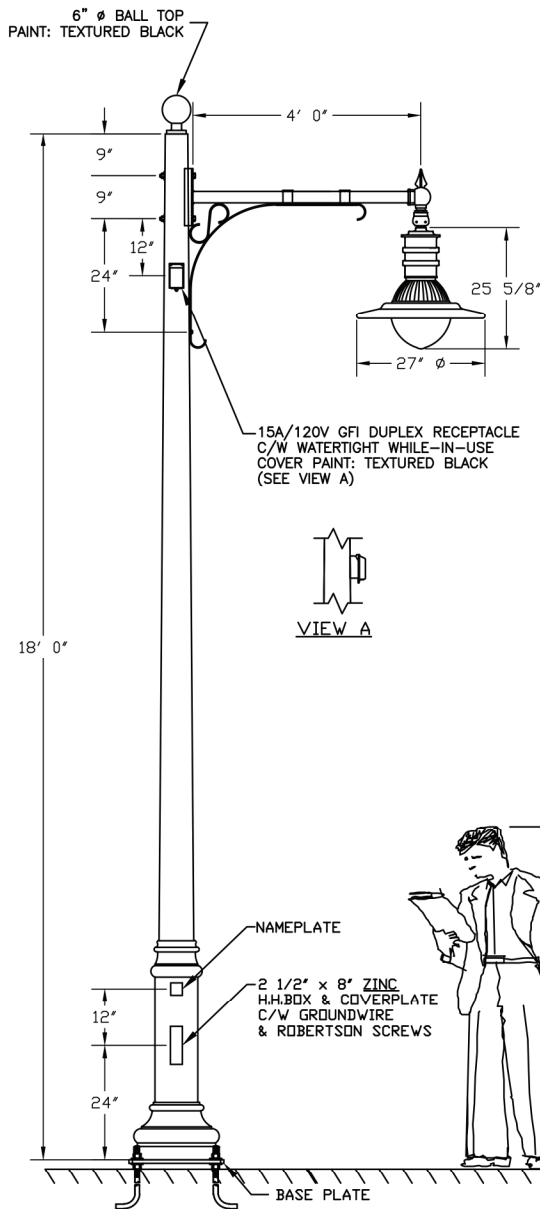
COMMUNITY IMPROVEMENT PLAN STANDARD DETAIL

DATE: FEBRUARY 2015
 SCALE: N.T.S.
 REVISION No.

DWG. No.

SD-307

REV.	ALTERATION	DATE	BY
A	ARM WAS KA55-T & POLE WAS KYC15-DB	01/28/15	T.B



LUMINAIRE SPECIFICATIONS

CATALOGUE NO.: (MOD)K206-P2SH-II-____(SSL)
-____-120:277-KPL10

QUANTITY:
OPTICAL SYSTEM: FLAT ARRAY, SHALLOW GLASS LENS
IES CLASS.: TYPE II
WATTAGE: _____W
SOLID STATE LIGHTING

SERIES:
LINE VOLTAGE: 120:277V
PAINT: TEXTURED BLACK
OPTIONS: KPL-10 LEVELING DEVICE

ARM SPECIFICATIONS

CATALOGUE NO.: KA10-S-4'

QUANTITY:
MATERIAL: ALUMINUM
PAINT: TEXTURED BLACK

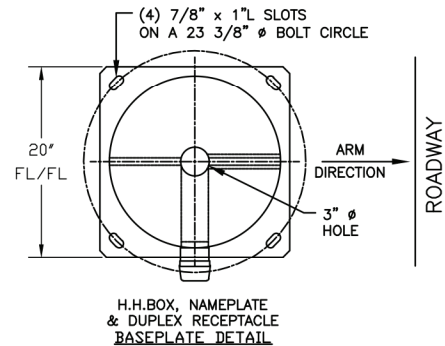
POLE SPECIFICATIONS

CATALOGUE NO.: KYC18-G-E11-FBP
C/W 140-15/30 & DR

QUANTITY:
COLOUR: ECLIPSE
FINISH: ETCHED
POLE TOP: 4 3/4" ϕ
POLE BUTT: 18" ϕ
POLE LENGTH: 18' 0"
APPROX WEIGHT: T.B.A lbs.
ANCHOR BOLTS: 3/4" ϕ x 27"L (BY OTHERS)
BOLT CIRCLE: 23 3/8" ϕ
BOLT PROJECTION: 3" HIGH



COATINGS REQUIRED:

-2 COATS (JB) ACRYLIC
FULL LENGTH



CUSTOMER APPROVAL & DATE:

CUSTOMER ORDER No:	-
STRESSCRETE ORDER No:	-
KMFG. ORDER No:	-
KING U.S. ORDER No:	-

 		Manufacturing Locations: Burlington, Ontario 1-800-268-7809 Northport, Alabama 1-800-435-6563 Atchison, Kansas 1-800-837-1024 Jefferson, Ohio 1-800-268-7809	
King Luminaire • StressCrete • Est. 1953 STRESSCRETE GROUP			
PROJECT/CUSTOMER: TOWNSHIP OF SELWYN, ON YOUNG'S POINT (PEDESTRIAN)			
DRAWN BY: A. ALVELA	AT: SC1	CHECKED BY:	DATE: 01/19/15
		REVISION: A	
DRAWING TYPE: CONCEPT DWG.		DRAWING NUMBER: 206A8203-4	

DWG. TITLE

YOUNG'S POINT PEDESTRIAN LIGHTING

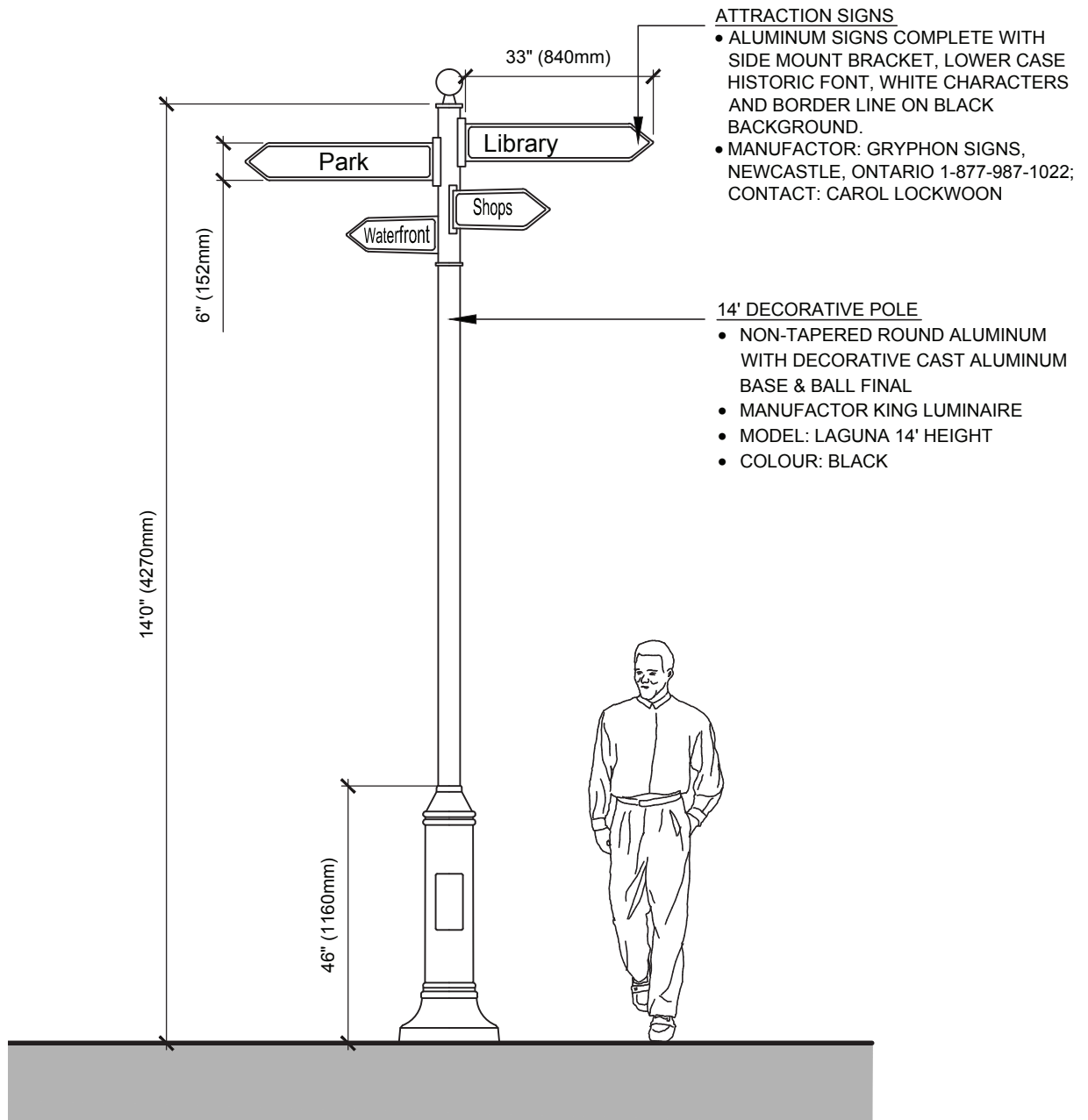


COMMUNITY IMPROVEMENT PLAN STANDARD DETAIL

DATE: FEBRUARY 2015
SCALE: N.T.S.
REVISION No.

DWG. No.

SD-308



DWG. TITLE

TOWNSHIP SIGN TREE



COMMUNITY IMPROVEMENT PLAN STANDARD DETAIL

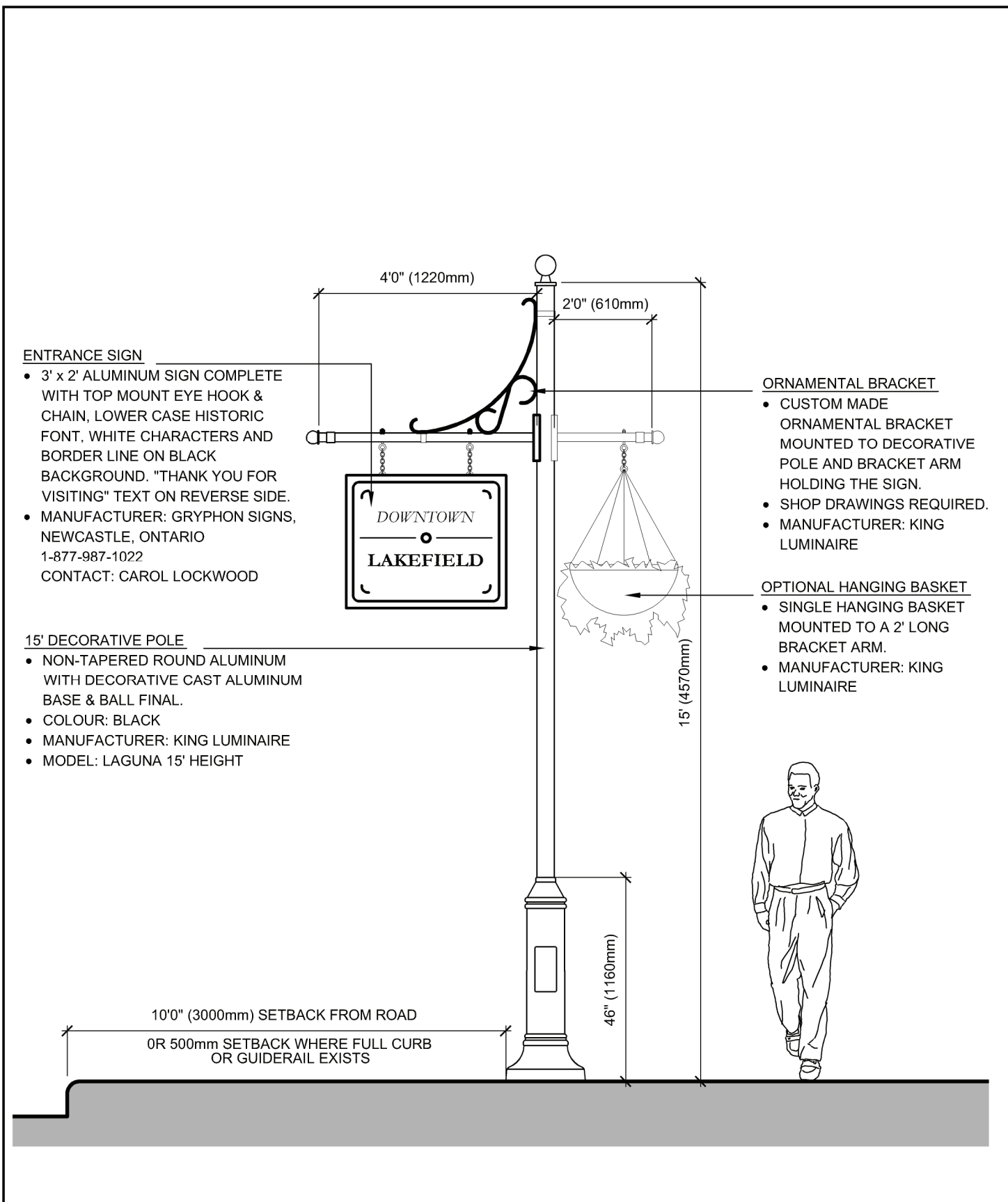
DATE FEBRUARY 2015

SCALE N.T.S.

REVISION No.

DWG. No.

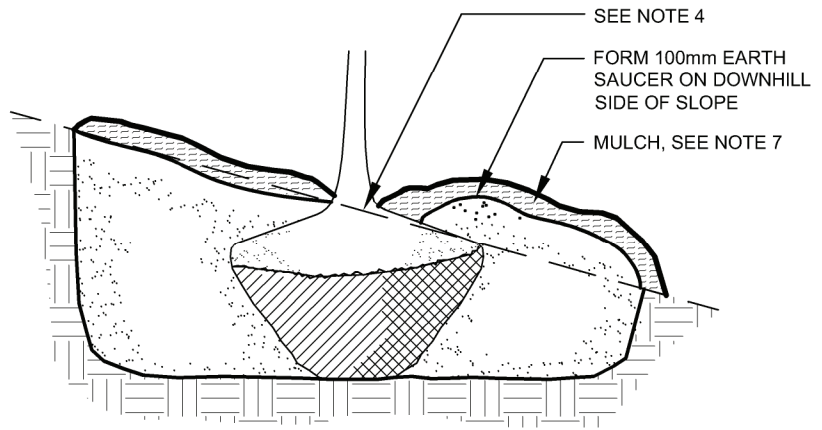
SD-401



<p>DWG. TITLE</p> <p>HAMLET OR HISTORIC VILLAGE SIGN</p>	<table> <tr> <td data-bbox="876 1810 1039 1890"> <p>Township of Selwyn</p> </td><td data-bbox="1039 1810 1529 1890"> <p>COMMUNITY IMPROVEMENT PLAN STANDARD DETAIL</p> </td></tr> <tr> <td data-bbox="876 1890 1039 1997"> <p>DATE FEBRUARY 2015</p> <p>SCALE N.T.S.</p> <p>REVISION No.</p> </td><td data-bbox="1039 1890 1529 1997"> <p>DWG. No.</p> <p>SD-402</p> </td></tr> </table>	<p>Township of Selwyn</p>	<p>COMMUNITY IMPROVEMENT PLAN STANDARD DETAIL</p>	<p>DATE FEBRUARY 2015</p> <p>SCALE N.T.S.</p> <p>REVISION No.</p>	<p>DWG. No.</p> <p>SD-402</p>
<p>Township of Selwyn</p>	<p>COMMUNITY IMPROVEMENT PLAN STANDARD DETAIL</p>				
<p>DATE FEBRUARY 2015</p> <p>SCALE N.T.S.</p> <p>REVISION No.</p>	<p>DWG. No.</p> <p>SD-402</p>				

NOTES:

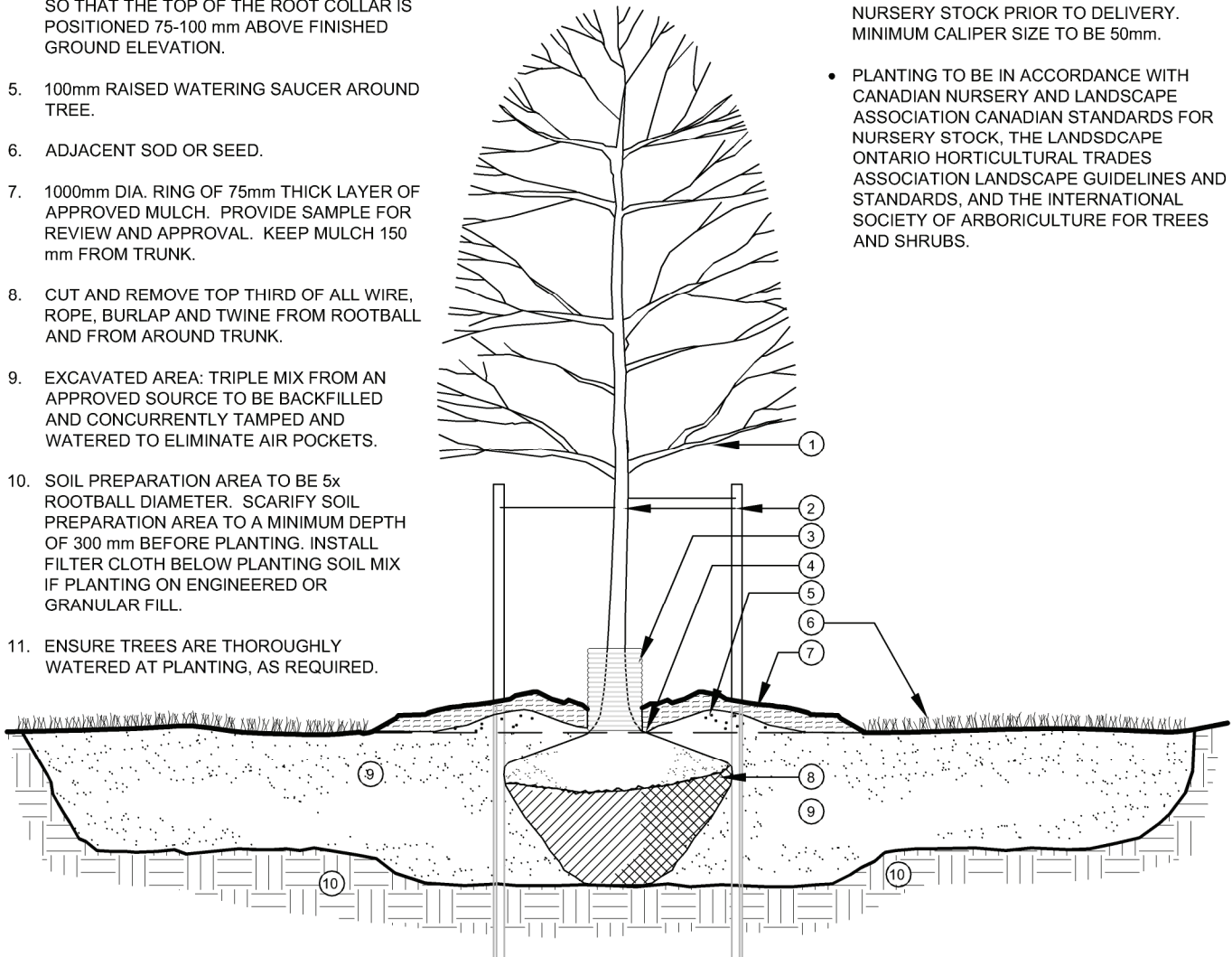
1. PRUNE BRANCHES TO CAREFULLY REMOVE DEAD, BROKEN, DAMAGED AND INTERFERING BRANCHES, DOUBLE LEADERS AND NARROW ANGLE BRANCH UNIONS WHILE RETAINING NATURAL FORM OF TREE. THIN HEAD WHEN AND WHERE APPLICABLE. DO NOT CUT LEADER BRANCHES.
2. ALL STAKES ARE TO BE WOODEN STAKES AND TIES ARE TO BE COMPOSED OF NON-FUNGICIDE TREATED BINDER TWINE OR SINGLE LAYER NON-TREATED BURLAP OR FABRIC. STAKING TO BE REMOVED ONE YEAR AFTER INSTALLATION.
3. REMOVE ALL TREE TRUNK WRAP FOLLOWING PLANTING. INSTALL 150 DIA. x450mm HIGH FLEXIBLE WHITE PLASTIC PIPE FOR RODENT GUARD/TRUNK PROTECTION.
4. ROOT COLLAR TO BE PLACED AT SAME LEVEL AS SURROUNDING GRADE. IN HEAVY CLAY ALL WOODY PLANTS TO BE PLACED SO THAT THE TOP OF THE ROOT COLLAR IS POSITIONED 75-100 mm ABOVE FINISHED GROUND ELEVATION.
5. 100mm RAISED WATERING SAUCER AROUND TREE.
6. ADJACENT SOD OR SEED.
7. 1000mm DIA. RING OF 75mm THICK LAYER OF APPROVED MULCH. PROVIDE SAMPLE FOR REVIEW AND APPROVAL. KEEP MULCH 150 mm FROM TRUNK.
8. CUT AND REMOVE TOP THIRD OF ALL WIRE, ROPE, BURLAP AND TWINE FROM ROOTBALL AND FROM AROUND TRUNK.
9. EXCAVATED AREA: TRIPLE MIX FROM AN APPROVED SOURCE TO BE BACKFILLED AND CONCURRENTLY TAMPED AND WATERED TO ELIMINATE AIR POCKETS.
10. SOIL PREPARATION AREA TO BE 5x ROOTBALL DIAMETER. SCARIFY SOIL PREPARATION AREA TO A MINIMUM DEPTH OF 300 mm BEFORE PLANTING. INSTALL FILTER CLOTH BELOW PLANTING SOIL MIX IF PLANTING ON ENGINEERED OR GRANULAR FILL.
11. ENSURE TREES ARE THOROUGHLY WATERED AT PLANTING, AS REQUIRED.



FOR PLANTING ON SLOPE

GENERAL NOTES:

- SELECT TREES THAT ARE FREE OF DISEASES, DAMAGE AND GIRDLED ROOTS. REVIEW NURSERY STOCK PRIOR TO DELIVERY. MINIMUM CALIPER SIZE TO BE 50mm.
- PLANTING TO BE IN ACCORDANCE WITH CANADIAN NURSERY AND LANDSCAPE ASSOCIATION CANADIAN STANDARDS FOR NURSERY STOCK, THE LANDSCAPE ONTARIO HORTICULTURAL TRADES ASSOCIATION LANDSCAPE GUIDELINES AND STANDARDS, AND THE INTERNATIONAL SOCIETY OF ARBORICULTURE FOR TREES AND SHRUBS.



DWG. TITLE

DECIDUOUS TREE PLANTING

Township of
Selwyn

COMMUNITY IMPROVEMENT PLAN
STANDARD DETAIL

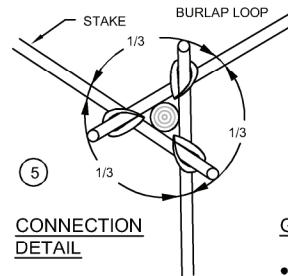
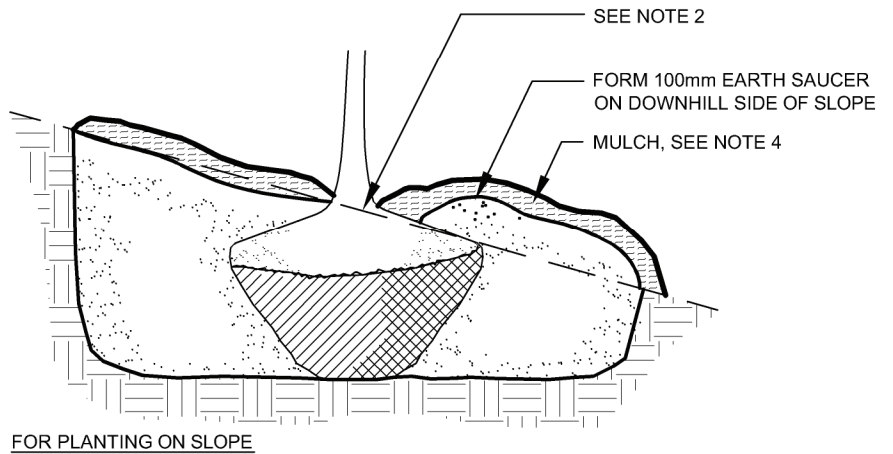
DATE FEBRUARY 2015
SCALE N.T.S.
REVISION No.

DWG. No.

SD-501

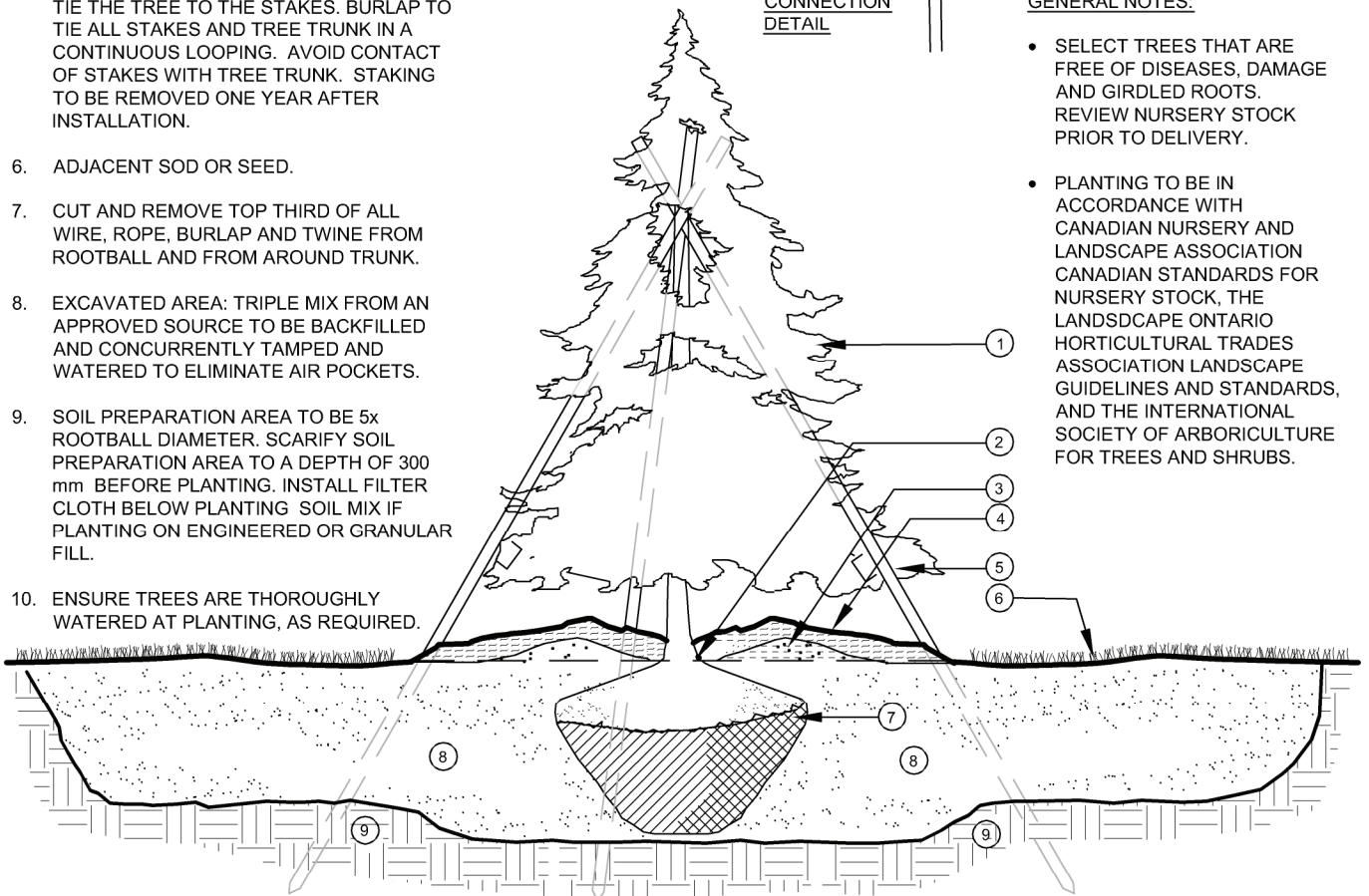
NOTES:

1. PRUNE BRANCHES TO CAREFULLY REMOVE DEAD, BROKEN, DAMAGED AND DOUBLE LEADERS. NEVER CUT A SINGLE LEADER. RETAIN NATURAL FORM OF TREE
2. ROOT COLLAR TO BE PLACED AT SAME LEVEL AS SURROUNDING GRADE. IN HEAVY CLAY ALL WOODY PLANTS TO BE PLACED SO THAT THE TOP OF THE ROOT COLLAR IS POSITIONED 76-100 mm ABOVE FINISHED GROUND ELEVATION.
3. 100mm RAISED WATERING SAUCER AROUND TREE.
4. 1000mm DIA. RING OF 75mm THICK LAYER OF APPROVED MULCH. PROVIDE SAMPLE FOR REVIEW AND APPROVAL. KEEP MULCH 150mm FROM TRUNK.
5. STAKE IMMEDIATELY. USE 3 WOOD STAKES FOR TREES UP TO 2 m HEIGHT. STAKES TO BE DRIVEN 300 mm INTO UNDISTURBED SUBSOIL, AT AN ANGLE NO LESS THAN 45° AND NO MORE THAN 60°, SPACED IN THIRDS OF A CIRCLE. USE BIODEGRADABLE MATERIAL, SUCH AS FOLDED BURLAP STAPLED TO STAKE WITH FENCE STAPLES OR ROOFING NAILS, TO TIE THE TREE TO THE STAKES. BURLAP TO TIE ALL STAKES AND TREE TRUNK IN A CONTINUOUS LOOPING. AVOID CONTACT OF STAKES WITH TREE TRUNK. STAKING TO BE REMOVED ONE YEAR AFTER INSTALLATION.
6. ADJACENT SOD OR SEED.
7. CUT AND REMOVE TOP THIRD OF ALL WIRE, ROPE, BURLAP AND TWINE FROM ROOTBALL AND FROM AROUND TRUNK.
8. EXCAVATED AREA: TRIPLE MIX FROM AN APPROVED SOURCE TO BE BACKFILLED AND CONCURRENTLY TAMPED AND WATERED TO ELIMINATE AIR POCKETS.
9. SOIL PREPARATION AREA TO BE 5x ROOTBALL DIAMETER. SCARIFY SOIL PREPARATION AREA TO A DEPTH OF 300 mm BEFORE PLANTING. INSTALL FILTER CLOTH BELOW PLANTING SOIL MIX IF PLANTING ON ENGINEERED OR GRANULAR FILL.
10. ENSURE TREES ARE THOROUGHLY WATERED AT PLANTING, AS REQUIRED.



GENERAL NOTES:

- SELECT TREES THAT ARE FREE OF DISEASES, DAMAGE AND GIRDLED ROOTS. REVIEW NURSERY STOCK PRIOR TO DELIVERY.
- PLANTING TO BE IN ACCORDANCE WITH CANADIAN NURSERY AND LANDSCAPE ASSOCIATION CANADIAN STANDARDS FOR NURSERY STOCK, THE LANDSCAPE ONTARIO HORTICULTURAL TRADES ASSOCIATION LANDSCAPE GUIDELINES AND STANDARDS, AND THE INTERNATIONAL SOCIETY OF ARBORICULTURE FOR TREES AND SHRUBS.



DWG. TITLE

CONIFEROUS TREE PLANTING

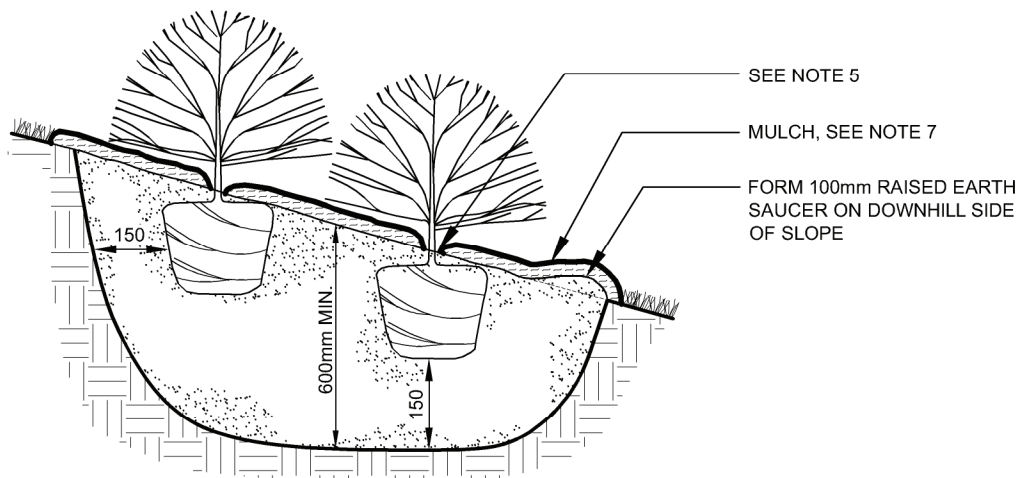
Township of
Selwyn

COMMUNITY IMPROVEMENT PLAN
STANDARD DETAIL

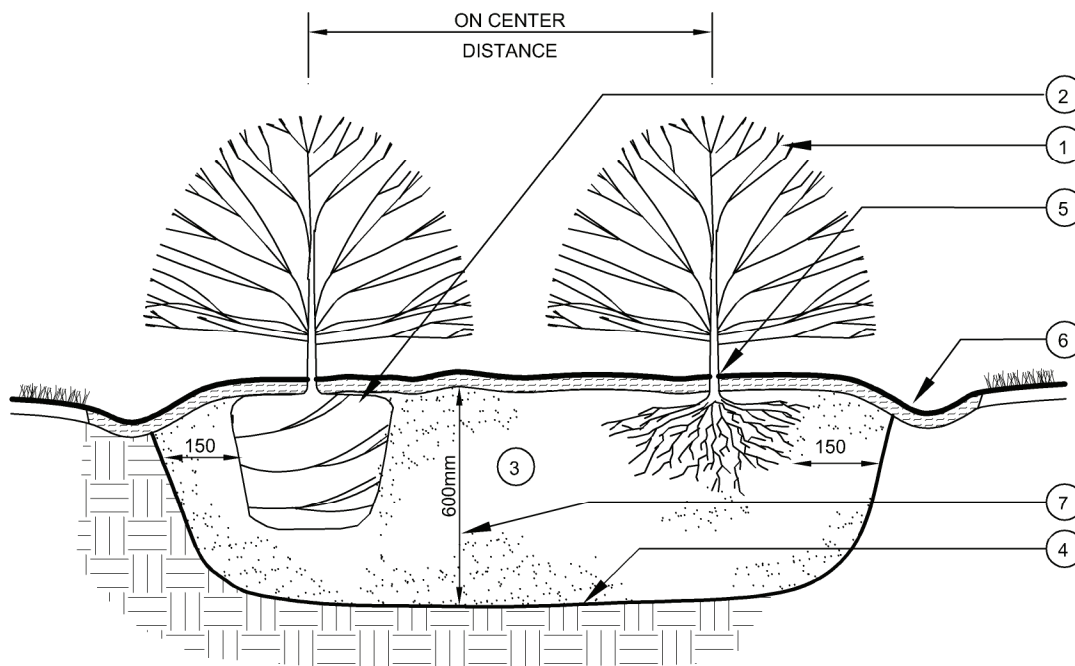
DATE FEBRUARY 2015
SCALE N.T.S.
REVISION No.

DWG. No.

SD-502



FOR PLANTING ON SLOPE



NOTES:

1. NEVER CUT EVERGREEN LEADER. REMOVE ANY BROKEN STEMS, BRANCHES OR LARGE LEAVES ON PERENNIALS. RETAIN NATURAL SHAPE.
2. CUT AND REMOVE TOP THIRD OF BURLAP FROM ROOT BALL/REMOVE POTS.
3. EXCAVATE ENTIRE PLANTING BED AS SHOWN ON PLAN. INSTALL TRIPLE-MIX FROM AN APPROVED SOURCE.
4. SCARIFY SURFACE OF COMPACTED SUBSOIL BEFORE PLANTING.
5. PLANTS SHALL BEAR SAME RELATION TO FINISHED GRADE AS THEY BORE TO PREVIOUS EXISTING GRADE.
6. 75 mm THICK LAYER OF APPROVED MULCH TO EXTEND PAST DRIPLINE OF SHRUBS. PROVIDE SAMPLE FOR REVIEW AND APPROVAL. KEEP MULCH OFF OF STEMS.
7. DEPTH TO BE AS SHOWN, UNLESS ALTERNATE DEPTH IS APPROVED BY LANDSCAPE ARCHITECT.

GENERAL NOTES:

- SELECT PLANT MATERIAL THAT IS FREE OF DISEASES, DAMAGE AND GIRDLED ROOTS. REVIEW NURSERY STOCK PRIOR TO DELIVERY.
- PLANTING TO BE IN ACCORDANCE WITH CANADIAN NURSERY AND LANDSCAPE ASSOCIATION CANADIAN STANDARDS FOR NURSERY STOCK, THE LANDSCAPE ASSOCIATION OF ONTARIO HORTICULTURAL TRADES ASSOCIATION LANDSCAPE GUIDELINES AND STANDARDS, AND THE INTERNATIONAL SOCIETY OF ARBORICULTURE FOR TREES AND SHRUBS.

DWG. TITLE

CONTINUOUS SHRUB PLANTING BED



DATE FEBRUARY 2015
SCALE N.T.S.
REVISION No.

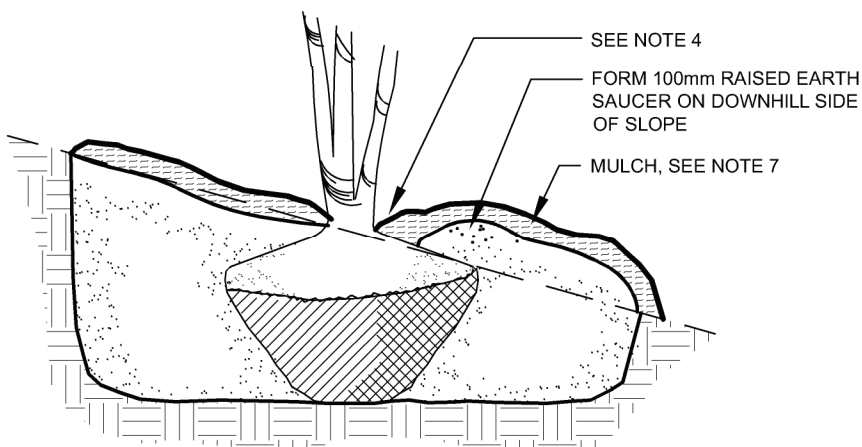
COMMUNITY IMPROVEMENT PLAN STANDARD DETAIL

DWG. No.

SD-503

NOTES:

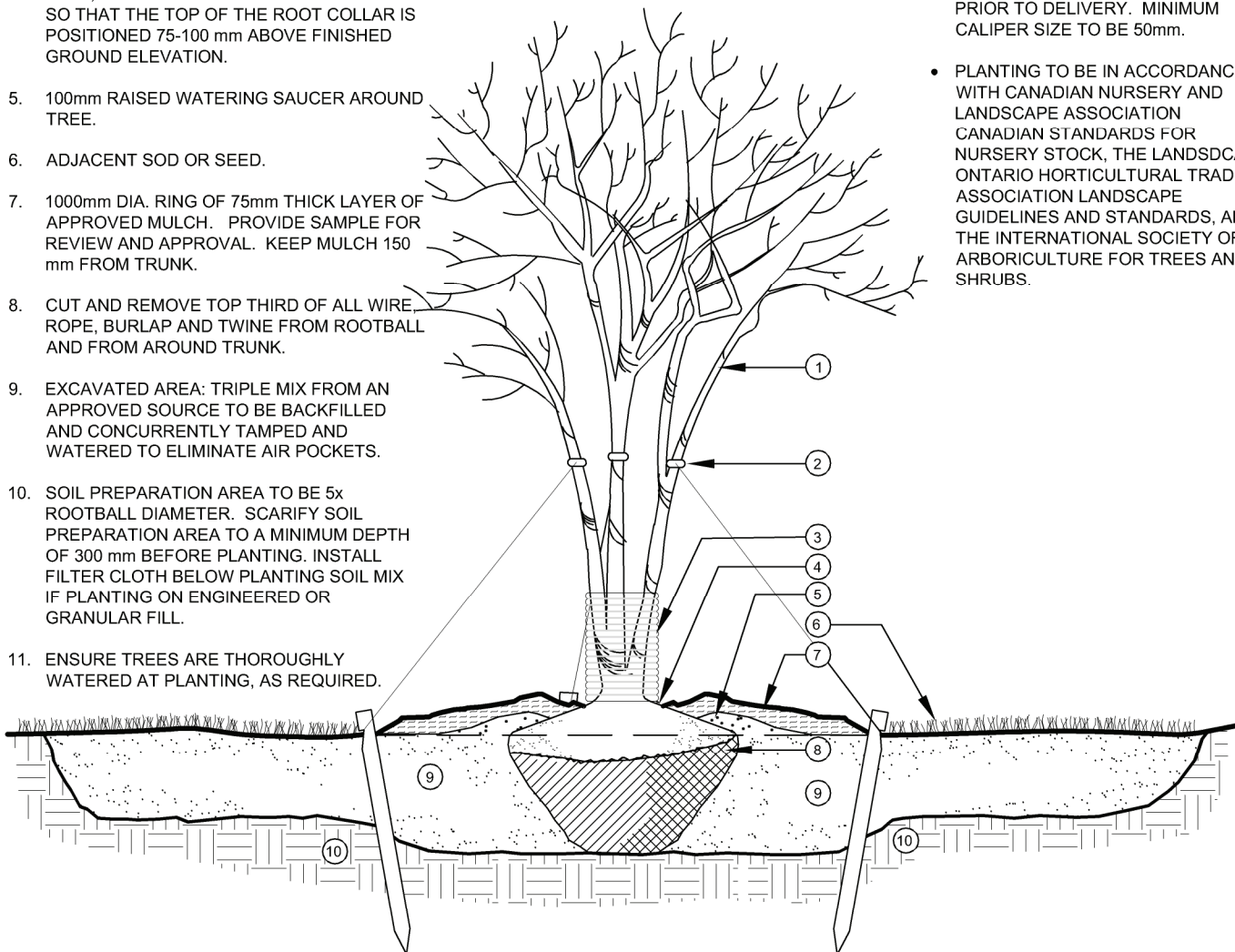
1. PRUNE BRANCHES TO CAREFULLY REMOVE DEAD, BROKEN, DAMAGED AND INTERFERING BRANCHES, DOUBLE LEADERS AND NARROW ANGLE BRANCH UNIONS WHILE RETAINING NATURAL FORM OF TREE. THIN HEAD WHEN AND WHERE APPLICABLE. DO NOT CUT LEADER BRANCHES.
2. 1000mm LONG SPRUCE STAKES (3) DRIVEN INTO FIRM SUBGRADE. TIES ARE TO BE COMPOSED OF NON-FUNGICIDE TREATED BINDER TWINE OR SINGLE LAYER NON-TREATED BURLAP OR FABRIC. STAKING TO BE REMOVED ONE YEAR AFTER INSTALLATION.
3. REMOVE ALL TREE TRUNK WRAP FOLLOWING PLANTING. INSTALL 150 DIA. x450mm HIGH FLEXIBLE WHITE PLASTIC PIPE FOR RODENT GUARD/TRUNK PROTECTION.
4. ROOT COLLAR TO BE PLACED AT SAME LEVEL AS SURROUNDING GRADE. IN HEAVY CLAY, ALL WOODY PLANTS TO BE PLACED SO THAT THE TOP OF THE ROOT COLLAR IS POSITIONED 75-100 mm ABOVE FINISHED GROUND ELEVATION.
5. 100mm RAISED WATERING SAUCER AROUND TREE.
6. ADJACENT SOD OR SEED.
7. 1000mm DIA. RING OF 75mm THICK LAYER OF APPROVED MULCH. PROVIDE SAMPLE FOR REVIEW AND APPROVAL. KEEP MULCH 150 mm FROM TRUNK.
8. CUT AND REMOVE TOP THIRD OF ALL WIRE ROPE, BURLAP AND TWINE FROM ROOTBALL AND FROM AROUND TRUNK.
9. EXCAVATED AREA: TRIPLE MIX FROM AN APPROVED SOURCE TO BE BACKFILLED AND CONCURRENTLY TAMPED AND WATERED TO ELIMINATE AIR POCKETS.
10. SOIL PREPARATION AREA TO BE 5x ROOTBALL DIAMETER. SCARIFY SOIL PREPARATION AREA TO A MINIMUM DEPTH OF 300 mm BEFORE PLANTING. INSTALL FILTER CLOTH BELOW PLANTING SOIL MIX IF PLANTING ON ENGINEERED OR GRANULAR FILL.
11. ENSURE TREES ARE THOROUGHLY WATERED AT PLANTING, AS REQUIRED.



FOR PLANTING ON SLOPE

GENERAL NOTES:

- SELECT TREES THAT ARE FREE OF DISEASES, DAMAGE AND GIRDLED ROOTS. REVIEW NURSERY STOCK PRIOR TO DELIVERY. MINIMUM CALIPER SIZE TO BE 50mm.
- PLANTING TO BE IN ACCORDANCE WITH CANADIAN NURSERY AND LANDSCAPE ASSOCIATION CANADIAN STANDARDS FOR NURSERY STOCK, THE LANDSCAPE ONTARIO HORTICULTURAL TRADES ASSOCIATION LANDSCAPE GUIDELINES AND STANDARDS, AND THE INTERNATIONAL SOCIETY OF ARBORICULTURE FOR TREES AND SHRUBS.



DWG. TITLE

MULTI-STEMMED TREE GUYING

Township of
Selwyn

COMMUNITY IMPROVEMENT PLAN STANDARD DETAIL

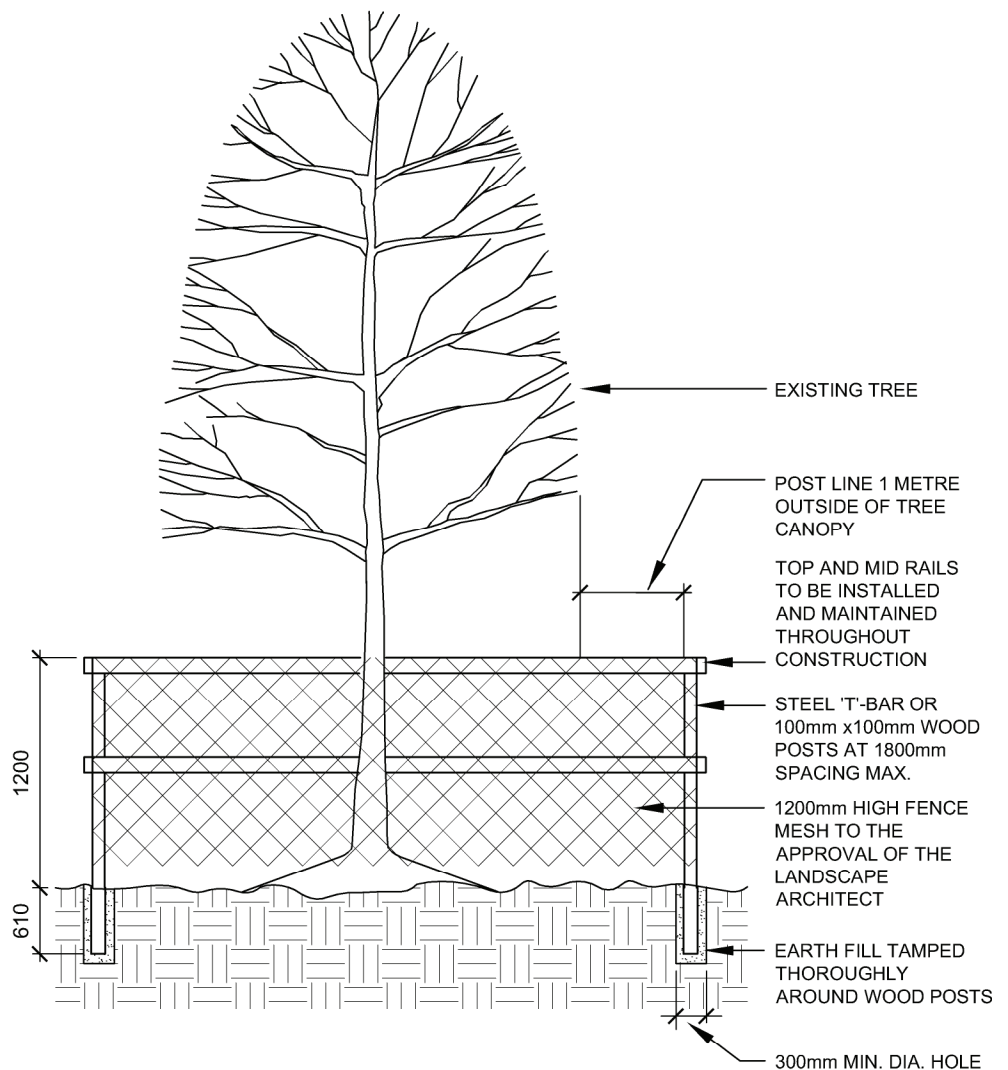
DATE FEBRUARY 2015
SCALE N.T.S.
REVISION No.

DWG. No.

SD-504

**SPECIFICATION FOR THE PROTECTION
AND PRESERVATION OF EXISTING TREES**

1. ALL EXISTING TREES WHICH ARE TO REMAIN, SHALL BE FULLY PROTECTED WITH HOARDING, I.E.. 1200MM (4') SNOW FENCING, ERECTED BEYOND THEIR "DRIP LINE". GROUPS OF TREES AND OTHER EXISTING PLANTINGS TO BE PROTECTED, SHALL BE DONE IN A LIKE MANNER WITH HOARDING AROUND THE ENTIRE CLUMP(S). AREAS WITHIN THE PROTECTIVE FENCING SHALL REMAIN UNDISTURBED AND SHALL NOT BE USED FOR THE STORAGE OF BUILDING MATERIALS OR EQUIPMENT;
2. NO RIGGING CABLES SHALL BE WRAPPED AROUND OR INSTALLED IN TREES AND SURPLUS SOIL, EQUIPMENT, DEBRIS OR MATERIALS SHALL NOT BE PLACED OVER ROOT SYSTEMS OF THE TREES WITHIN THE PROTECTIVE FENCING. NO CONTAMINANTS WILL BE DUMPED OR FLUSHED WHERE FEEDER ROOTS OF TREES EXIST;
3. WHERE LIMBS OR PORTIONS OF TREES ARE REMOVED TO ACCOMMODATE CONSTRUCTION WORK, THEY WILL BE REMOVED CAREFULLY BY ACCEPTED HORTICULTURAL PRACTICES;
4. WHERE ROOT SYSTEMS OF PROTECTED TREES ARE EXPOSED DIRECTLY ADJACENT TO OR DAMAGED BY CONSTRUCTION WORK, THEY SHALL BE TRIMMED NEATLY AND THE AREA BACKFILLED WITH APPROPRIATE MATERIAL TO PREVENT DESSICATION;
5. WHERE NECESSARY, THE TREES WILL BE GIVEN AN OVERALL PRUNING TO RESTORE THE BALANCE BETWEEN ROOTS AND TOPGROWTH OR TO RESTORE THE APPEARANCE OF THE TREE;
6. IF GRADES AROUND TREES TO BE PROTECTED ARE LIKELY TO CHANGE, TAKE SUCH PRECAUTIONS AS DRY WELLING AND ROOT FEEDING TO MAINTAIN THE HEALTH OF THE TREES;
7. TREE PROTECTION ZONES SHALL BE ESTABLISHED PRIOR TO THE COMMENCEMENT OF CONSTRUCTION ACTIVITY ON SITE, AND SHALL REMAIN FOR THE DURATION OF WORK, MAINTAINED IN GOOD CONDITION AT ALL TIMES.



DWG. TITLE

TREE PRESERVATION PROTECTION FENCE



DATE FEBRUARY 2015
SCALE N.T.S.
REVISION No.

COMMUNITY IMPROVEMENT PLAN **STANDARD DETAIL**

DWG. No.

SD-505

REFER TO PLANS FOR TREE AND PAVING LAYOUTS. INSTALL SILVA CELLS AS PER MANUFACTURER'S SPECIFICATIONS (DEEP ROOT CANADA CORP. Vancouver, BC. www.deeproot.com; mjames@deeproot.com (1-800-561-3883))

PLANTING AS PER PLANS AND DETAILS

PLANTING SOIL, TAMPED TO MAX. 85% COMPACTION BELOW ROOT BALL

SILVA CELL BEYOND

DEEPROOT UB18-2 ROOT BARRIER

PLANTER WALL (SD-103)

PRECAST PAVING (SD-104)

INSPECTION RISER

4"(100MM) AGGREGATE SUB BASE, COMPACTED TO 95%

SUBGRADE BELOW GEOTEXTILE AND AGGREGATE BASE COURSE, COMPACTED TO 95%

PLANTING SOIL PER SILVA CELL SPECIFICATIONS, INSTALLED IN 8"(200MM) LIFTS (2 LIFTS PER CELL)

SILVA CELL BASE SLOPE TO MAX. 5%

ANCHOR EACH SILVA CELL TO GROUND WITH (4) 10" (250MM) SPIKE, <10MM DIA., SEE CELL BASE FOR SPIKE HOLE

BACKFILL, INSTALLED IN 8"(200MM) LIFTS, WITHIN 4"-6"(100-150MM) FROM TOP OF DECKS, COMPACTED TO 95%

CONCRETE PAVING AS PER PLAN AND DETAIL SD-101

SILVA CELLS: SCREW CELL DECKS TO FRAMES AFTER SNAPPING IN PLACE (TYP.)

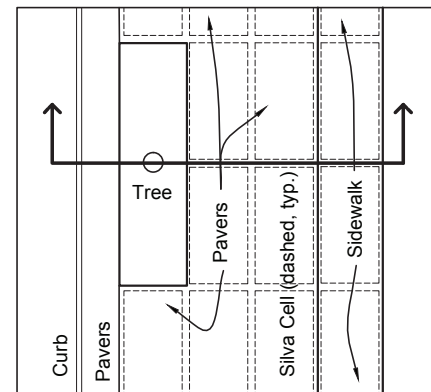
GEOGRID: 'J' 6"(150MM) MINIMUM BELOW BACKFILL AT BASE. OVERLAP 12"(300MM) MINIMUM AT TOP OF CELLS.

3/16" X 14"(5MM X 350MM) ZIP TIES, ATTACHING GEOGRID TO SILVA CELLS AT EACH LEVEL AND AT CELL DECK

1"(25MM) AIR SPACE BETWEEN SILVA CELL DECK AND PLANTING SOIL

GEOTEXTILE, 18"(450MM) MINIMUM OVERLAP PAST EXCAVATION

500



KEY PLAN
(for reference only)

DWG. TITLE

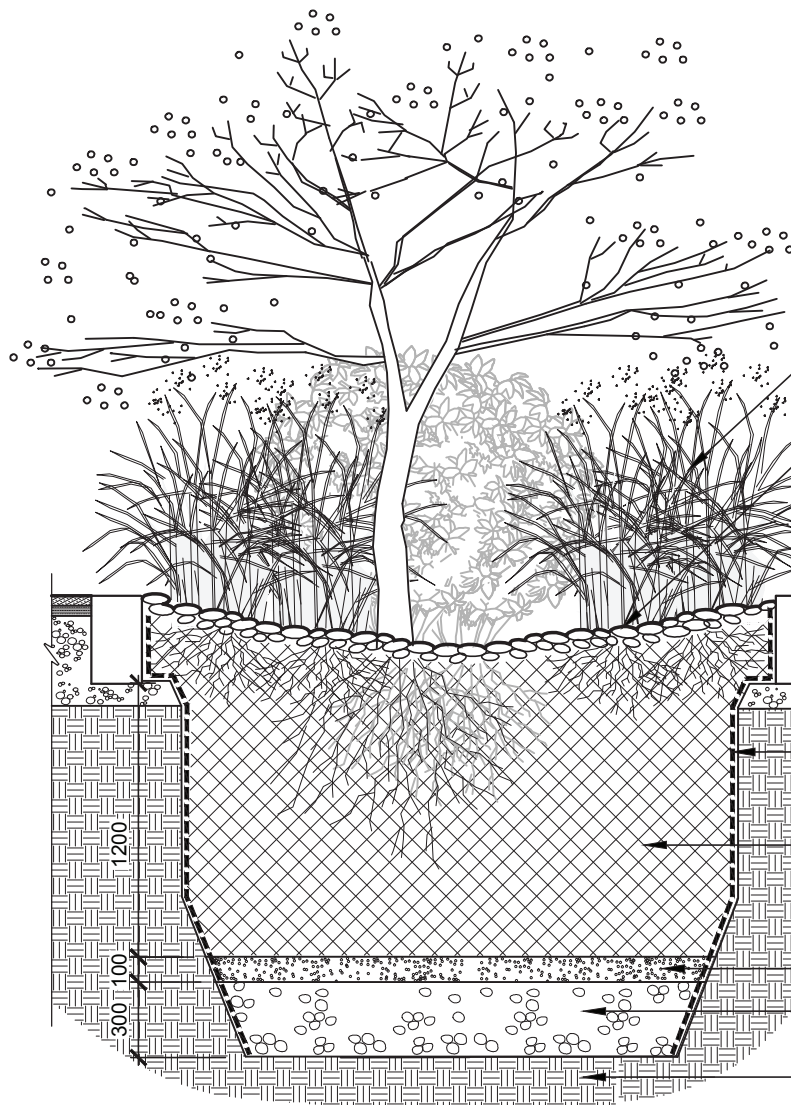
TREE PLANTING IN HARD LANDSCAPE



DATE FEBRUARY 2015
SCALE N.T.S.
REVISION No.

COMMUNITY IMPROVEMENT PLAN **STANDARD DETAIL**

SD-506



NOTE:

TEST SOIL POROSITY
DURING EXCAVATION AND
NOTIFY LANDSCAPE
ARCHITECT OF RESULTS

PLANTING AS PER PLAN

GRANITE COBBLE MULCH TO MEET
FLUSH WITH ADJACENT TOPS OF
CURBS (25-50mm DIAM. AT 150mm
DEEP)

C.I.P. CONCRETE CURB FLUSH WITH
ADJACENT PAVING

ASPHALT PAVING

EPDM LINER (BOTH SIDES), FULL
DEPTH OF EXCAVATION, BUT NOT ON
BOTTOM OF PIT

1.2m DEPTH OF AMENDED SOIL
FILTER MEDIUM (REFER TO SOIL
COMPOSITION NOTES , BELOW)

100mm PEA GRAVEL CHOKING LAYER

300mm DEPTH OF 50mm DIAMETER
CLEAR STONE

UNDISTURBED SUBGRADE

SECTION

AMENDED SOIL FILTER MEDIUM SOIL COMPOSITION:

1. SAND: 2 TO 0.05mm, 85-88% by weight
2. FINES: less than 0.05mm, 8-12% by weight
3. ORGANIC MATTER - leaf compost(or approved alternative), 3-5% by weight
4. SOILS TO HAVE AN INFILTRATION RATE OF APPROXIMATELY 12 TO 30 MM/HR

DWG. TITLE

INFILTRATION PLANTER



**COMMUNITY IMPROVEMENT PLAN
STANDARD DETAIL**

DATE FEBRUARY 2015

SCALE N.T.S.

REVISION No.

DWG. No.

SD-507

