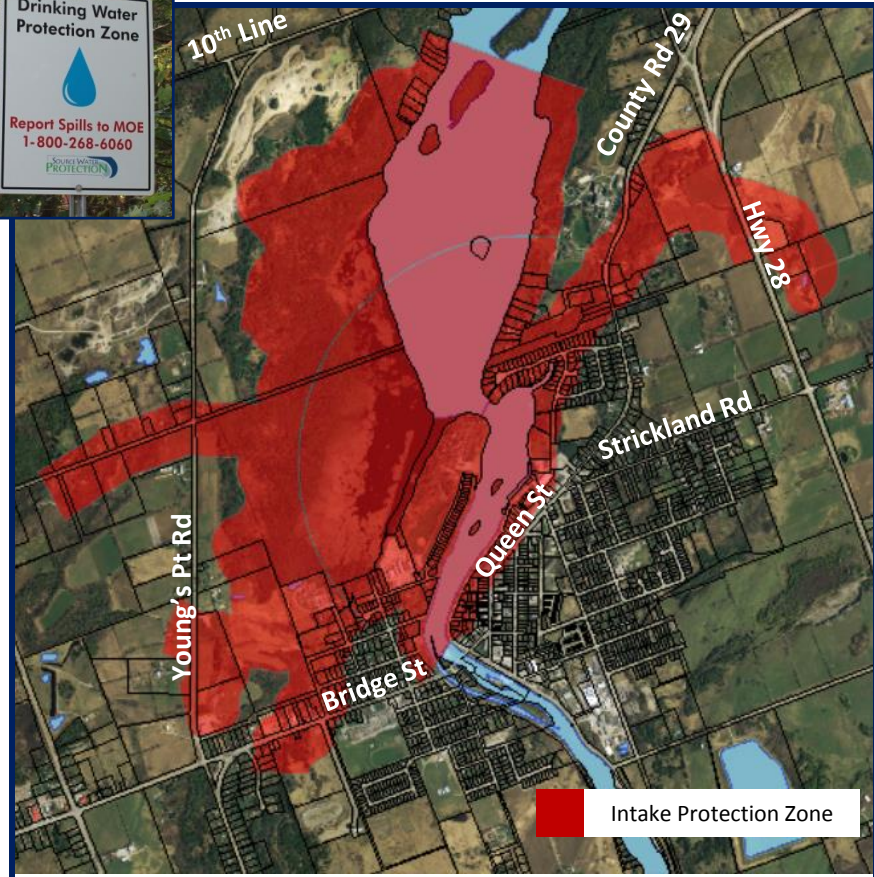


The Lakefield Municipal Surface Water System is 1 of 53 municipal residential drinking water systems in the Trent Conservation Coalition Source Protection Region, and 1 of 12 systems in the Otonabee-Peterborough Source Protection Area.

The Trent Source Protection Plan came into effect January 1, 2015 and was developed under the *Clean Water Act*. It was approved by the Ministry of the Environment and Climate Change (MOECC) and contains policies that direct local efforts to better protect the sources of water that supply municipal residential drinking water systems.

The MOECC lists 21 drinking water threats (land-based activities that can impact source water quality or quantity). The location, scale and nature of an activity determine if the threat is low, moderate, or *significant*. Trent Source Protection Plan policies apply to *significant* drinking water threat activities in the Lakefield Intake Protection Zone shown at right and on map on the reverse.



**Types of Drinking Water Threats**

- ✓ Waste
- ✓ Sewage
- ✓ Livestock
- ✓ Snow storage
- ✓ Other chemicals
- ✓ Pesticides
- ✓ Fertilizer
- ✓ Nutrients
- ✓ Fuel

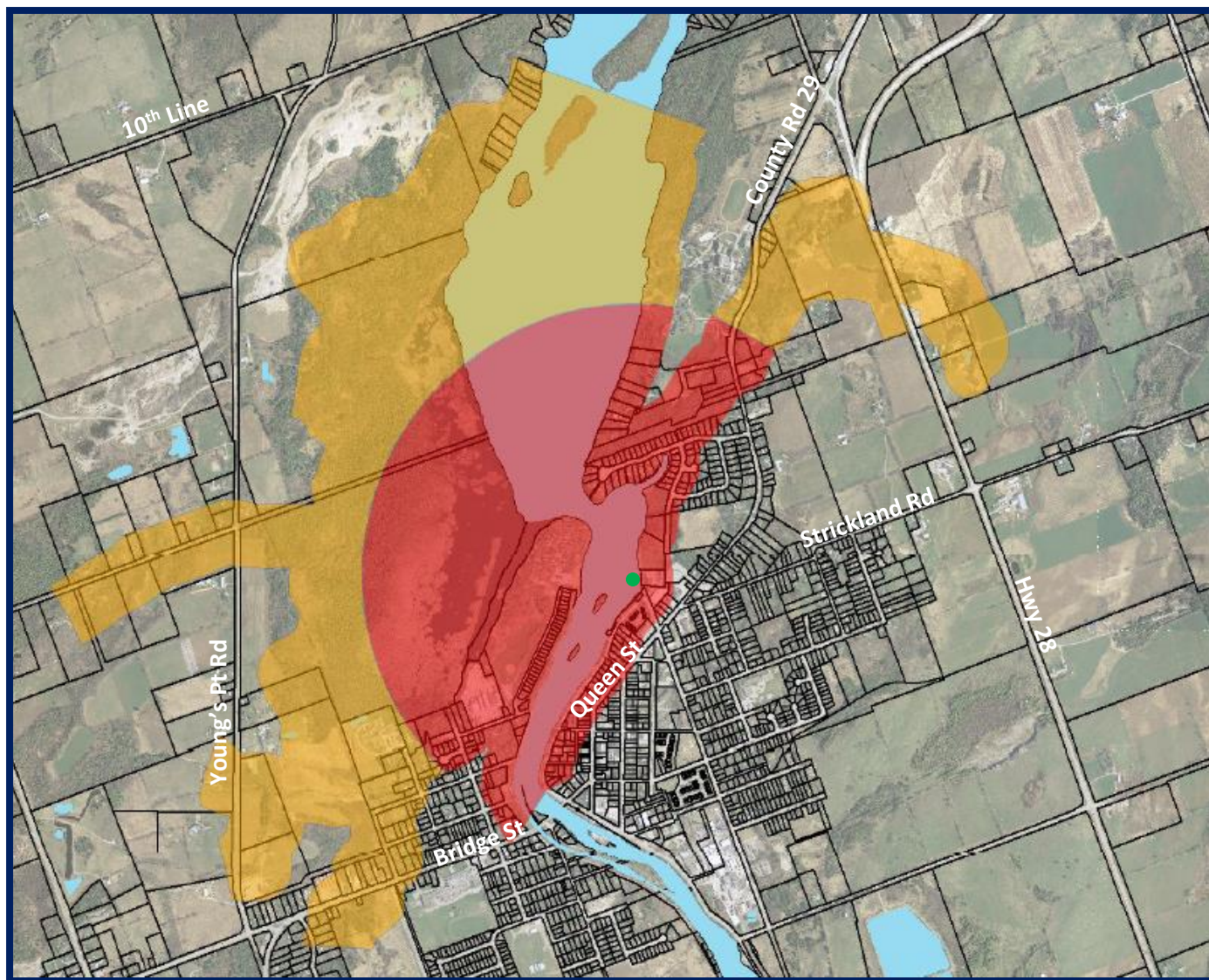
Water Source	Otonabee River
Owned By	Township of Selwyn
Operating Authority	Peterborough Utility Services
Serviced Population	3,100 (approximately)
Annual Pump Rate	1,547 m <sup>3</sup> / day (average)
Intake Depth	2 m (approximately)
Intake Classification	Type D (affected by a water impoundment structure)
Treatment System	Full conventional treatment process (coagulation, flocculation, sedimentation, filtration, and disinfection)

Data Source: Approved Trent Assessment Report dated October 1, 2014



Trent Source Protection Plan policies apply to *significant* drinking water threat activities in the Intake Protection Zone shown below and as illustrated on the Policy Applicability Map included in the appendix of the Trent Source Protection Plan.

- Primary protection area around the municipal intake pipe (●)
- Contaminants may reach the municipal intake pipe (●) within 2 hours of a spill or leak in this area



Meredith Carter  
Manager, Environmental and Technical Services  
(705) 745-5791 x 223  
mcarter@otonabee.com

Terri Cox  
Risk Management Official and Inspector  
(705) 745-5791 x 219  
tcox@otonabee.com

The Trent Source Protection Plan is available at [www.trentsourceprotection.on.ca](http://www.trentsourceprotection.on.ca)

With support provided by  Ontario