

METRIC: DISTANCES AND COORDINATES SHOWN HEREON ARE IN METRES
CAN BE CONVERTED TO FEET BY DIVIDING BY 0.3048

SCHEDULE

PART	LOT	CONCESSION	PIN	AREA
1	PART OF LOT 41	13	PART OF PIN 28393-0018(LT)	0.39 Ha.

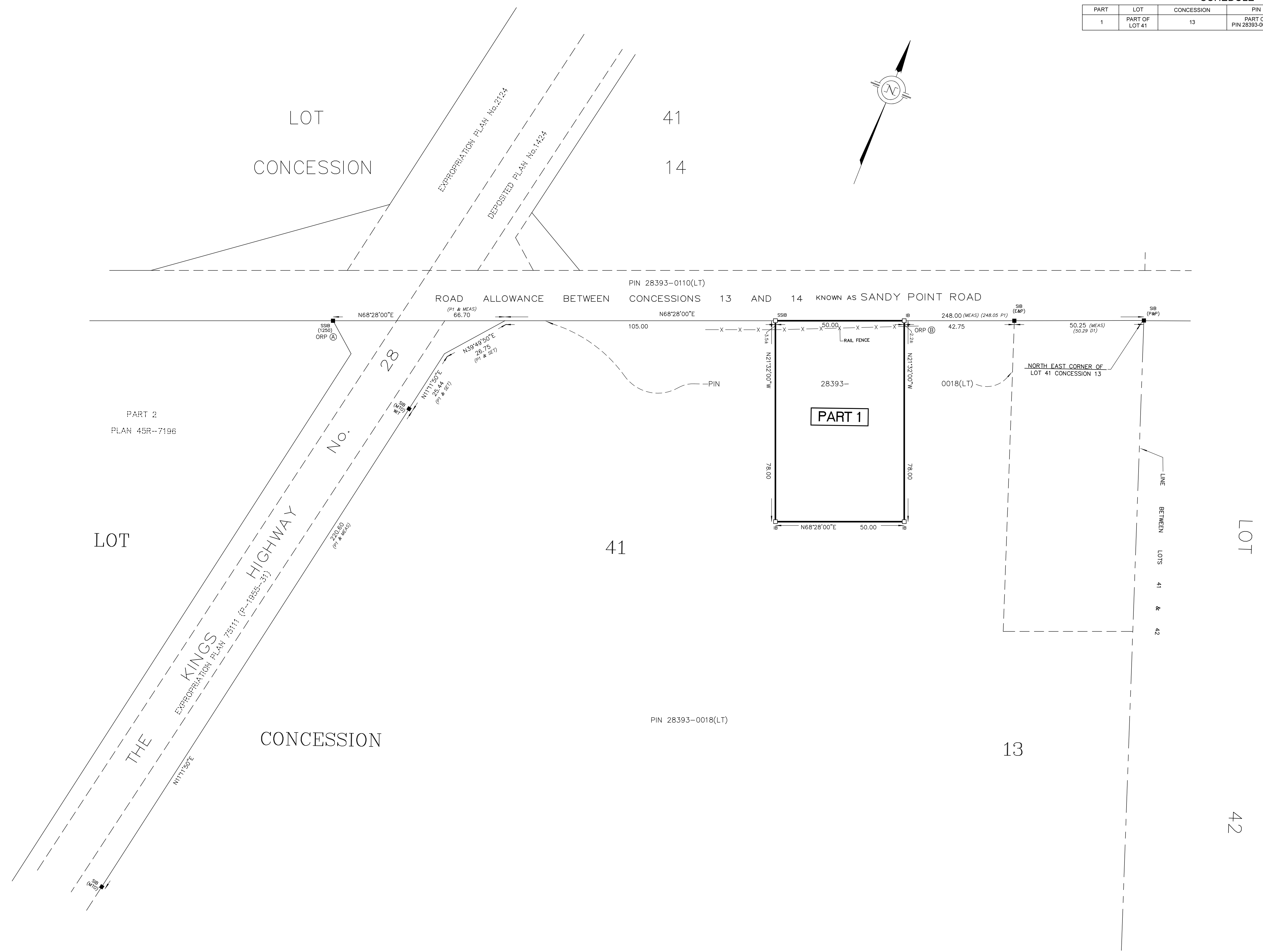
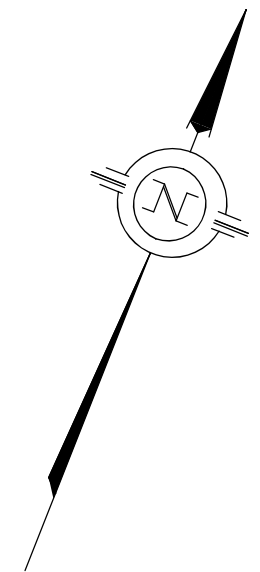
PLAN 45R-17540

Received and deposited

September 19th, 2023

Carolette Liburd

Representative for the
Land Registrar for the
Land Titles Division of
Peterborough (No.45)



PLAN OF SURVEY OF
PART OF LOT 41
CONCESSION 13
GEOGRAPHIC TOWNSHIP OF SMITH
TOWNSHIP OF SELWYN
COUNTY OF PETERBOROUGH



SCALE: 1:750

THE INTENDED PLOT SIZE OF THIS PLAN IS 860mm IN WIDTH BY 560mm IN HEIGHT
WHEN PLOTTED AT A SCALE OF 1:750

SURVEYOR'S CERTIFICATE

I CERTIFY THAT:

- THIS SURVEY AND PLAN ARE CORRECT AND ARE IN ACCORDANCE WITH THE SURVEYS ACT, THE SURVEYORS ACT AND THE LAND TITLES ACT AND THE REGULATIONS MADE UNDER THEM.
- THE SURVEY WAS COMPLETED ON 28 AUGUST, 2023

SIGNED AT LAKEFIELD, ONTARIO
THIS 29TH DAY OF AUGUST, 2023

[Signature]
CHRISTOPHER E. MUSCLOW
ONTARIO LAND SURVEYOR

THIS PLAN OF SURVEY IS RELATED TO AOLS PLAN SUBMISSION FORM NUMBER V-49747.

LEGEND

- DENOTES SURVEY MONUMENT FOUND
- DENOTES SURVEY MONUMENT PLANTED
- WIT. DENOTES WITNESS
- MTO DENOTES MINISTRY OF TRANSPORTATION
- P&P DENOTES PIERCE & PIERCE, O.L.S.
- E&P DENOTES ELLIOTT & PARR, O.L.S.
- 1250 DENOTES THOMAS S. FLUKE, O.L.S.
- P1 DENOTES EXPROPRIATION PLAN No. 75111 BY DEPARTMENT OF HIGHWAYS, ONTARIO
- D1 DENOTES R466637

BEARINGS SHOWN HEREON ARE UTM GRID, DERIVED FROM REAL TIME NETWORK (RTN) OBSERVATIONS ON POINTS A AND B LISTED HEREON AND ARE REFERRED TO THE CENTRAL MERIDIAN OF UTM ZONE 17 (81° WEST LONGITUDE) NAD 83 (CSRS EPOCH 2010.0).

FOR BEARING COMPARISONS, A ROTATION OF 1°58'10" COUNTER CLOCKWISE WAS APPLIED TO BEARINGS SHOWN ON P1

DISTANCES SHOWN HEREON ARE GROUND DISTANCES AND CAN BE USED TO COMPUTE GRID DISTANCES BY MULTIPLYING BY A COMBINED SCALE FACTOR OF 1.00016234

INTEGRATION DATA

COORDINATES ARE DERIVED FROM GPS RTK OBSERVATIONS USING THE SMARTNET CORRECTION DATA AND ARE REFERRED TO UTM ZONE 17 (81°W LONGITUDE) NAD83 (CSRS EPOCH 2010.0).

OBSERVED REFERENCE POINT (ORP) COORDINATE VALUES ARE TO 'RURAL' ACCURACY SPECIFICATION IN ACCORDANCE WITH SEC. 14(2) OF O. REG. 216/10

POINT	UTM NORTHING	UTM EASTING
ORP (A)	4933162.15	721439.65
ORP (B)	4933243.52	721645.88

CAUTION: COORDINATES CANNOT, IN THEMSELVES, BE USED TO RE-ESTABLISH CORNERS OR BOUNDARIES SHOWN ON THIS PLAN.



JBF SURVEYORS
3177 LAKEFIELD ROAD, BOX 70
LAKEFIELD, ON K0L 2H0
PHONE: 705-652-6198
INFO@JBFSURVEYORS.COM
WWW.JBFSURVEYORS.COM
PROJ. # 8799